

28 002 970



- COMPACT RAIN, max. flow rate 9 l/min (at 3 bar)
- Function from: 6 l/min
- spray head Ø 64mm
- 1/2" connection
- WRAS 240502026, 1809019

Intrinsic protection against back flow.

	Gold (23.9kt)	28 002 970-01
	Chrome	28 002 970-00
	Chrome	28 002 970-00 0010
	Brushed Platinum	28 002 970-06
	Brushed Platinum	28 002 970-06 0010
	Platinum	28 002 970-08
	Platinum	28 002 970-08 0010
	Durabass (23kt Gold)	28 002 970-09
	Durabass (23kt Gold)	28 002 970-09 0010
	Brushed Durabass (23kt Gold)	28 002 970-28
	Brushed Durabass (23kt Gold)	28 002 970-28 0010
	Brushed Chrome	28 002 970-93
	Brushed Chrome	28 002 970-93 0010
	Brushed Dark Platinum	28 002 970-99
	Brushed Dark Platinum	28 002 970-99 0010

28 002 970

mm [inches]



**Flow rate chart**



**Codes & Standards**

DIN 4109

ISO 3822

Scottish Water  
Byelaws

UK Water Supply  
Regulations

**Ü-Zeichen**



MADISON Metal hand shower with porcelain insert (white) - Gold (23.9kt)

---

MADISON

28 002 970

Certificates

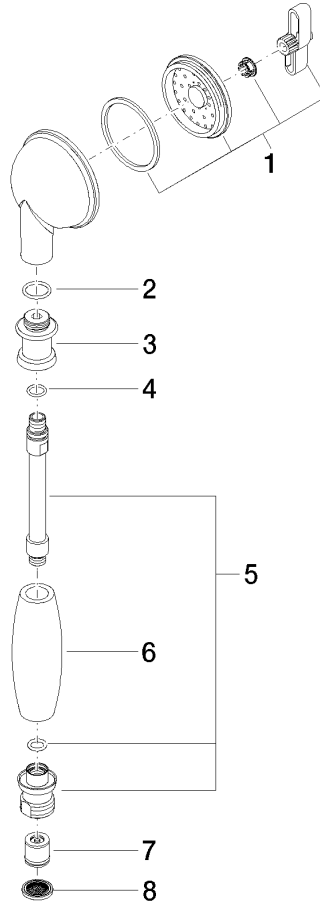
---

LGA\_8

WRAS\_240502

28 002 970

Parts for other finishes can be found here: [Chrome](#)





MADISON Metal hand shower with porcelain insert (white) - Gold (23.9kt)

MADISON

28 002 970

**Spare parts list**

No.	Item Number	Name	Quantity used	Delivery time
	90 12 01 010 00 90	set	6	2