

VAIA POT FILLER Cold-water valve - Brushed Platinum

VAIA

30 805 809 Product version from 7/1/2023



- 500mm projection
- pivoting spout
- laminar flow
- cold water only
- max. flow 5.7 l/min at 3 bar flow pressure
- min. recess depth 125 mm
- max. recess depth 80 mm
- lead-free
- This product can help a building meet the requirements of Green Building Rating Systems, e.g. LEED®, BREEAM®, DGNB
- WRAS

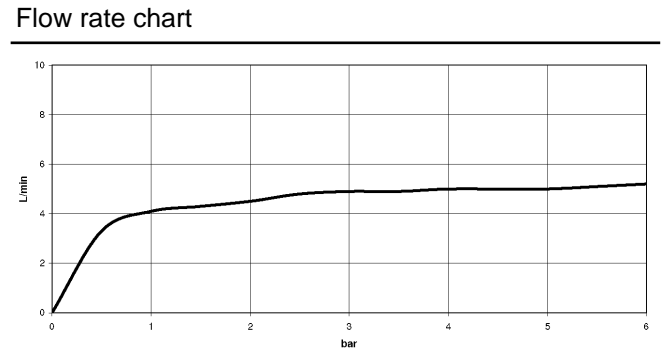
| | | |
|---|--------------------------------|---------------|
|  | Brushed Platinum | 30 805 809-06 |
|  | Chrome | 30 805 809-00 |
|  | Platinum | 30 805 809-08 |
|  | Durabronze (23kt Gold) | 30 805 809-09 |
|  | Dark Chrome | 30 805 809-19 |
|  | Brushed Durabronze (23kt Gold) | 30 805 809-28 |
|  | Brushed Bronze | 30 805 809-42 |
|  | Brushed Champagne (22kt Gold) | 30 805 809-46 |
|  | Champagne (22kt Gold) | 30 805 809-47 |
|  | Brushed Chrome | 30 805 809-93 |
|  | Brushed Dark Platinum | 30 805 809-99 |

Required miscellaneous

POT FILLER Concealed wall elbow 35 087 970 90



- min. recess depth 80 mm
- max. recess depth 125 mm



Codes & Standards

| | | | |
|----------------|-------|------------------------|-----------------------------|
| ASME A112.18.1 | cUPC | DIN 4109 | ISO 3822 |
| NSF372 | NSF61 | Scottish Water Byelaws | UK Water Supply Regulations |
| Ü-Zeichen | | | |



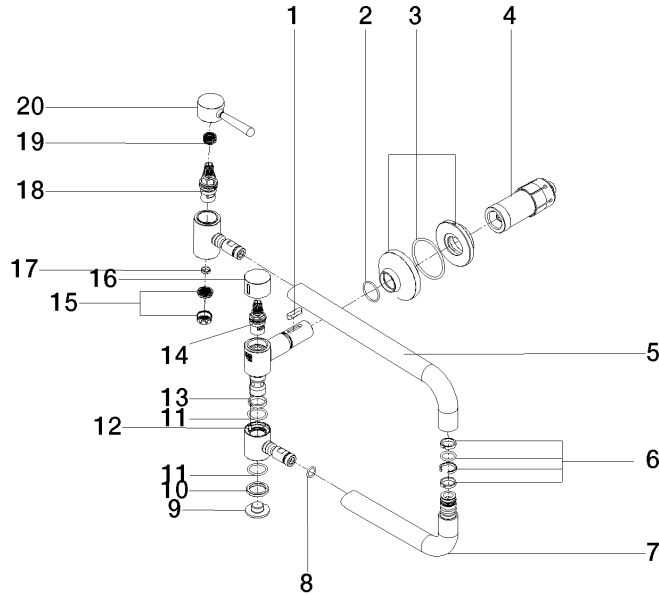
VAIA POT FILLER Cold-water valve - Brushed Platinum

VAIA

30 805 809 Product version from 7/1/2023

Certificates and sustainability

LGA_29 IAPMO_N-4976 WRAS_240702 IAPMO_6397 IAPMO_4976 (



Spare parts list

| No. | Item Number | Name | Quantity used | Delivery time |
|-----|--------------------|------------|---------------|---------------|
| 2 | 90 14 10 063 00 90 | seal | 1.00 | 2 |
| 20 | 90 20 80 051 00-06 | handle | 1.00 | 10 |
| 12 | 09 31 11 109 90 | pin | 1.00 | 2 |
| 8 | 90 14 10 077 00 90 | seal | 2.00 | 2 |
| 5 | 09 28 22 208-06 | pipe | 1.00 | 10 |
| 13 | 09 28 10 136 90 | ring | 1.00 | 2 |
| 7 | 04 28 22 221 10-06 | pipe | 1.00 | 10 |
| 15 | 09 29 03 089 90 | aerator | 1.00 | 60 |
| 6 | 90 28 10 199 00 90 | gasket kit | 1.00 | 2 |
| 4 | 90 30 01 213 00 90 | connection | 1.00 | 2 |
| 9 | 09 21 02 028-06 | lid | 1.00 | 10 |
| 10 | 09 28 10 139 90 | ring | 1.00 | 2 |
| 16 | 09 20 62 025-06 | handle | 1.00 | 10 |
| 3 | 90 27 87 039 00-06 | rosette | 1.00 | 10 |
| 17 | 09 14 05 002 90 | seal | 1.00 | 2 |
| 14 | 90 90 03 171 00 90 | top | 1.00 | 2 |
| 18 | 90 90 03 146 00 90 | top | 1.00 | 2 |
| 11 | 09 14 10 015 90 | seal | 2.00 | 2 |
| 19 | 90 12 12 232 00 90 | fixing cap | 1.00 | 2 |
| 1 | 90 16 04 001 00 90 | spring | 1.00 | 2 |