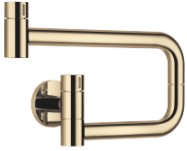


30 805 875



- 500mm projection
- pivoting spout
- laminar flow
- cold water only
- max. flow 5.7 l/min at 3 bar flow pressure
- min. recess depth 125 mm
- max. recess depth 80 mm
- lead-free
- This product can help a building meet the requirements of Green Building Rating Systems, e.g. LEED®, BREEAM®, DGNB

	Durabronz (23kt Gold)	30 805 875-09
	Chrome	30 805 875-00
	Brushed Platinum	30 805 875-06
	Platinum	30 805 875-08
	Dark Chrome	30 805 875-19
	Brushed Durabronz (23kt Gold)	30 805 875-28
	Brushed Champagne (22kt Gold)	30 805 875-46
	Champagne (22kt Gold)	30 805 875-47
	Brushed Chrome	30 805 875-93
	Brushed Dark Platinum	30 805 875-99

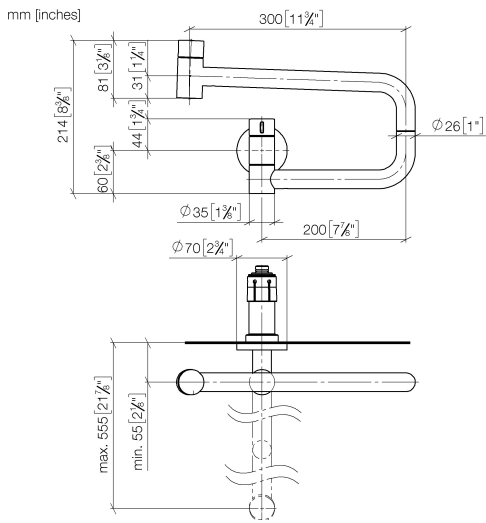
**Required miscellaneous**

**POT FILLER Concealed wall elbow** 35 087 970 90

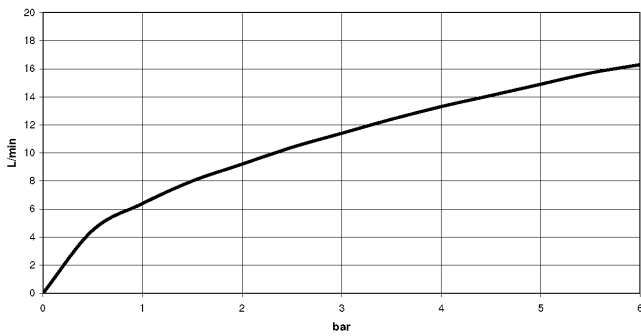


- max. recess depth 125 mm
- min. recess depth 80 mm

30 805 875



**Flow rate chart**



**Codes & Standards**

DIN 4109                      ISO 3822                      NSF372                      NSF61

**Ü-Zeichen**



TARA ULTRA POT FILLER Cold-water valve - Durabronss (23kt Gold)

TARA ULTRA

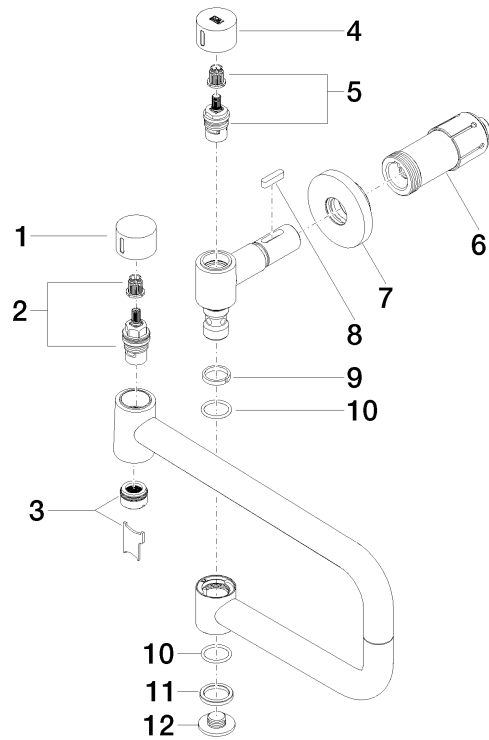
30 805 875

Certificates

IAPMO\_N-4

IAPMO\_6

LGA\_29





TARA ULTRA POT FILLER Cold-water valve - Durabross (23kt Gold)

TARA ULTRA

30 805 875

**Spare parts list**

No.	Item Number	Name	Quantity used	Delivery time
	09 20 62 025-09	handle	13	40