








LISSE Single-lever basin mixer without pop-up waste - Chrome

LISSE

33 521 845 Product version from 3/9/2016 to 10/31/2018



- 130mm projection
- fixed spout
- circular, air-enriched flow
- height of mixer 127 mm
- height up to aerator 75 mm
- hole diameter 35 mm
- 2x screw-in M 8 x 1 pressure hose, leak-tested
- max. flow 5.7 l/min
- lead-free
- This product can help a building meet the requirements of Green Building Rating Systems, e.g. LEED®, BREEAM®, DGNB
- WRAS

| | | |
|---|-----------------------|---------------|
|  | Chrome | 33 521 845-00 |
|  | Brushed Platinum | 33 521 845-06 |
|  | Dark Chrome | 33 521 845-19 |
|  | Brushed Light Gold | 33 521 845-27 |
|  | Matte Black | 33 521 845-33 |
|  | Brushed Chrome | 33 521 845-93 |
|  | Brushed Dark Platinum | 33 521 845-99 |

33 521 845 Product version from 3/9/2016 to 10/31/2018



Flow rate chart



Codes & Standards

| | | | |
|--------------------------------|-----------------------------|----------|---------------------------|
| DIN 4109 | Executive Order no. 1007 | ISO 3822 | Scottish Water Byelaws |
| UK Water Supply Regulations | Ü-Zeichen | | |



LISSE Single-lever basin mixer without pop-up waste - Chrome

LISSE

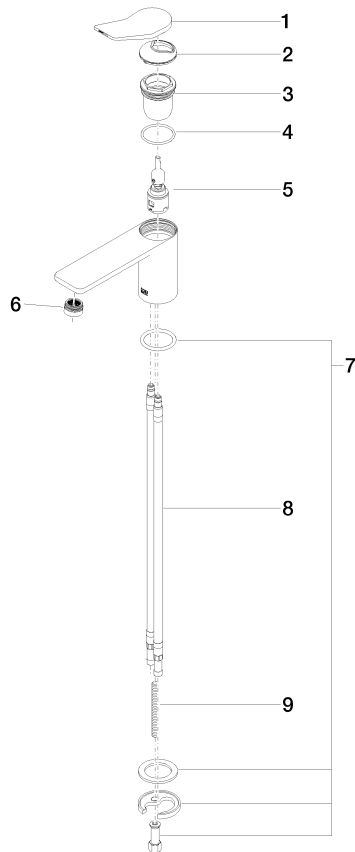
33 521 845 Product version from 3/9/2016 to 10/31/2018

Certificates and sustainability

LGA_29

GDV_0400

WRAS_250402



Spare parts list

| No. | Item Number | Name | Quantity used | Delivery time |
|-----|----------------------|------------|---------------|---------------|
| | 4 09 14 10 038 90 | seal | 1.00 | 2 |
| | 9 09 31 11 011 90 | pin | 1.00 | 2 |
| | 2 09 28 30 034 90 | cover | 1.00 | 2 |
| | 1 90 20 84 020 00-00 | handle | 1.00 | 10 |
| | 3 09 23 10 123 90 | nut | 1.00 | 2 |
| | 6 90 23 01 161 01-00 | aerator | 1.00 | 10 |
| | 7 04 30 11 038 75 90 | fixing set | 1.00 | 2 |
| | 5 90 15 05 042 01 90 | cartridge | 1.00 | 2 |
| | 8 04 30 04 018 00 90 | hose | 2.00 | 60 |