

33 870 790



- 235mm projection
- pivotable spout 360°
- air-enriched flow and spray flow
- height of mixer 342 mm
- height up to aerator 292 mm
- hole diameter 35 mm
- fabric braided hose 1500 mm
- max. flow 8 l/min at 3 bar flow pressure
- lead-free
- This product can help a building meet the requirements of Green Building Rating Systems, e.g. LEED®, BREEAM®, DGNB

Intrinsic protection against back flow.

|   |                                |               |
|---|--------------------------------|---------------|
|  | Brushed Platinum               | 33 870 790-06 |
|  | Chrome                         | 33 870 790-00 |
|  | Platinum                       | 33 870 790-08 |
|  | Dark Chrome                    | 33 870 790-19 |
|  | Brushed Durabronze (23kt Gold) | 33 870 790-28 |
|  | Brushed Champagne (22kt Gold)  | 33 870 790-46 |
|  | Champagne (22kt Gold)          | 33 870 790-47 |
|  | Brushed Chrome                 | 33 870 790-93 |
|  | Brushed Dark Platinum          | 33 870 790-99 |

**Recommended miscellaneous**

**Strainer waste with control handle - Brushed Platinum** 10 712 970-06

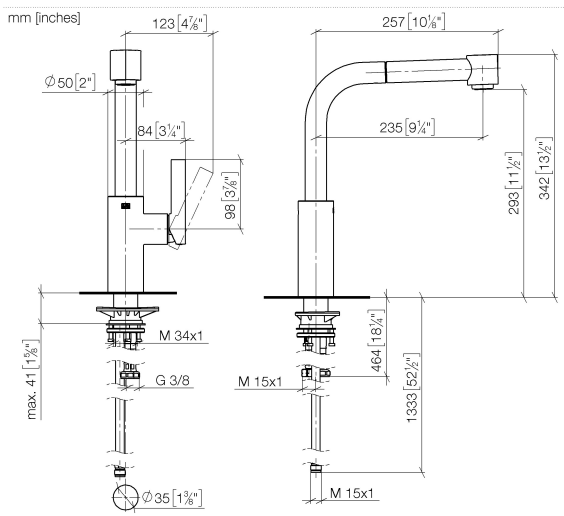


**Recommended miscellaneous**

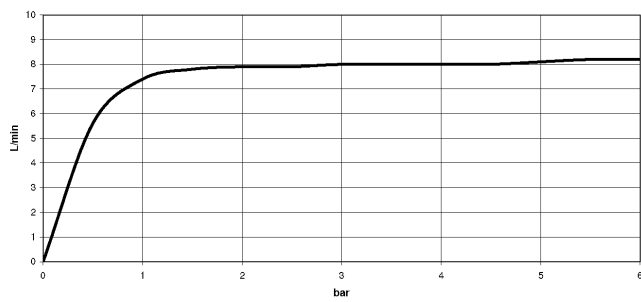
**Dispenser without rosette - Brushed Platinum** 82 424 970-06



33 870 790



**Flow rate chart**

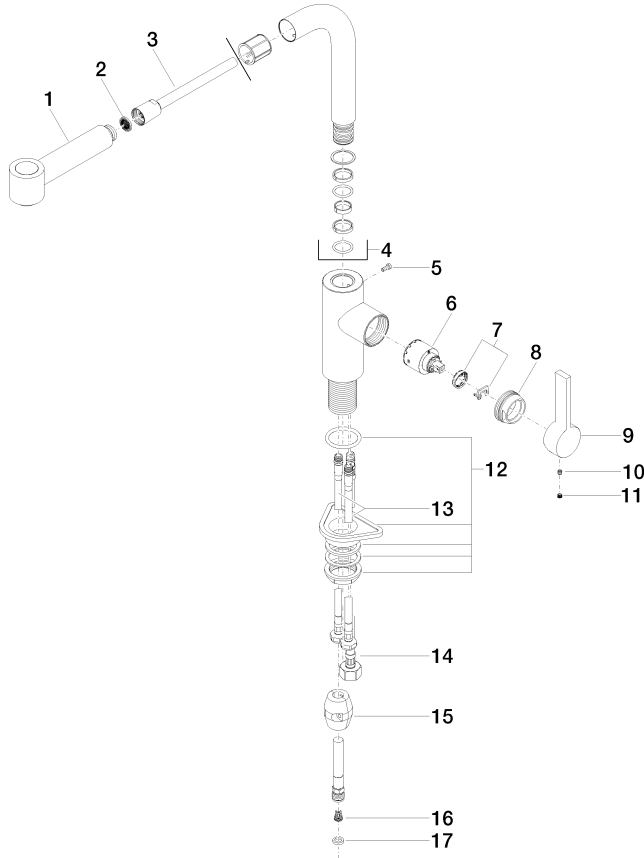


**Certificates**

LGA\_18252.      Belgaqua\_21-379-      GDV\_0400277.  
27\_3.

33 870 790

Parts for other finishes can be found here: [Chrome](#)



**Spare parts list**

| No. | Item Number        | Name                | Quantity used | Delivery time |
|-----|--------------------|---------------------|---------------|---------------|
| 1   | 90 12 11 098 00-06 | shower              | 1             | 10            |
| 2   | 09 23 01 039 90    | sieve               | 1             | 2             |
| 3   | 90 30 02 062 00-06 | hose                | 1             | 10            |
| 4   | 90 28 22 186 00-06 | spout               | 1             | 10            |
| 5   | 09 30 30 054 90    | screw               | 1             | 2             |
| 6   | 90 15 05 061 00 90 | cartridge           | 1             | 60            |
| 7   | 90 28 10 148 00 90 | accessories         | 1             | 2             |
| 8   | 09 24 04 141-06    | nut                 | 1             | 10            |
| 9   | 09 20 79 040-06    | handle              | 1             | 10            |
| 10  | 90 31 11 030 00 90 | pin                 | 1             | 2             |
| 11  | 90 31 20 109 00 90 | plug                | 1             | 2             |
| 12  | 04 23 10 044 02 90 | fixing set          | 1             | 2             |
| 13  | 04 30 04 104 00 90 | hose                | 2             | 2             |
| 14  | 04 30 04 029 00 90 | hose                | 1             | 2             |
| 15  | 04 21 50 005 00 90 | accessories         | 1             | 2             |
| 16  | 09 23 01 131 90    | back-flow preventer | 1             | 2             |
| 17  | 90 14 20 019 00 90 | seal                | 1             | 2             |