

35 020 970 90



- lead-free, dezincification resistant
- 2x back flow preventer
- 3x outlet G 1/2"
- 2x female thread 1/2" connections
- 2x integrated supply stop
- dust cover
- anti-water packing
- sound and thermal insulation
- gauge 60 mm
- WRAS

Required miscellaneous



Drybox Concealed single-lever mixer with and without diverter -

39 121 970 90

- Overflow is part of the scope of delivery.

Recommended miscellaneous



Extension 25 mm -

12 190 970 90

- for concealed single-lever shower and bath mixer 36 02X SSS-FF

Recommended miscellaneous



Extension 25 mm -

12 191 970 90

- for concealed single-lever shower and bath mixer 36 12X SSS-FF

Required miscellaneous



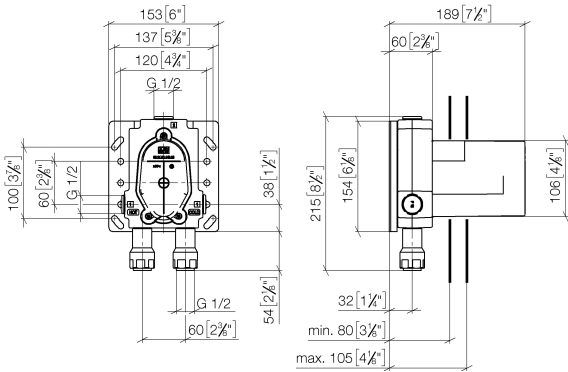
Leak protection 1/2" -

12 010 970 90

- This article is needed 2x.

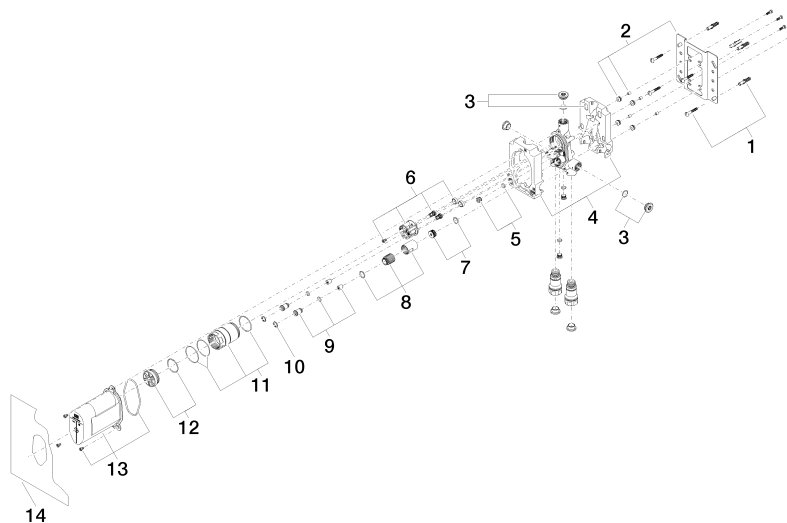
35 020 970 90

mm [inches]



| Codes & Standards | | | |
|-----------------------------|-----------|----------|------------------------|
| DIN 4109 | EN 817 | ISO 3822 | Scottish Water Byelaws |
| UK Water Supply Regulations | Ü-Zeichen | | |

| Certificates and sustainability | | |
|---------------------------------|--------|-----------|
| DVGW_DW-6512DN0 | LGA_19 | WRAS_2207 |



Spare parts list

| No. | Item Number | Name | Quantity used | Delivery time |
|-----|--------------------|-------------|---------------|---------------|
| 4 | 09 11 11 058 90 | accessories | 1.00 | 2 |
| 13 | 90 21 02 148 00 90 | cap | 1.00 | 2 |
| 1 | 04 30 31 024 01 90 | fixing set | 2.00 | 2 |
| 6 | 90 18 40 151 00 90 | insert | 1.00 | 2 |
| 8 | 90 17 01 189 00 90 | sleeve | 1.00 | 2 |
| 3 | 04 31 20 006 00 90 | plug | 2.00 | 2 |
| 14 | 04 14 03 155 00 90 | gasket kit | 1.00 | 2 |
| 7 | 90 31 20 098 00 90 | plug | 1.00 | 2 |
| 11 | 90 17 01 187 00 90 | sleeve | 1.00 | 2 |
| 9 | 04 24 03 223 00 90 | insert | 2.00 | 2 |
| 10 | 09 16 01 014 90 | ring | 2.00 | 2 |
| 12 | 04 31 20 100 00 90 | plug | 1.00 | 2 |
| 2 | 04 17 20 128 00 90 | holder | 1.00 | 2 |
| 5 | 04 31 20 039 11 90 | plug | 1.00 | 2 |