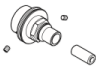


35 521 970 90




- red brass, lead-free
- 2x back flow preventer
- 2x female thread 3/4" connections
- 1x female thread 3/4" outlet for additional valves
- 2x female thread 3/4" outlet, right/left alternatively
- 3x dust cover
- 3x anti-water packing
- soundproofing
- gauge 120 mm
- suitable for xGRID (when using installation track + 12 mm recess depth)
- WRAS

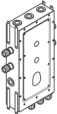
Recommended miscellaneous

|   | Extension 28 mm - | 12 177 970 90 |
|---|-------------------|---------------|
|  |                   |               |

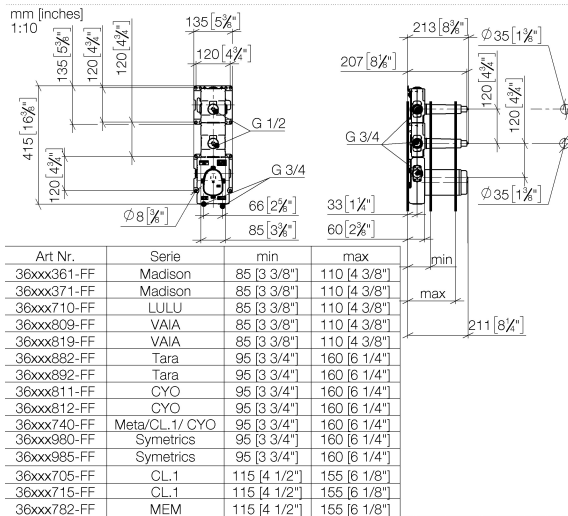
Recommended miscellaneous

|   | Extension 46 mm - | 12 178 970 90 |
|---|-------------------|---------------|
|  |                   |               |

Required miscellaneous

|  |   |
|--|---|
|  | <b>Drybox Thermostat module with 2 valves -</b><br>39 521 970 90<br>•Overflow is part of the scope of delivery. |
|--|---|

35 521 970 90



## Codes & Standards

EN 1111

EN 1717

Scottish Water  
Byelaws

UK Water Supply  
Regulations

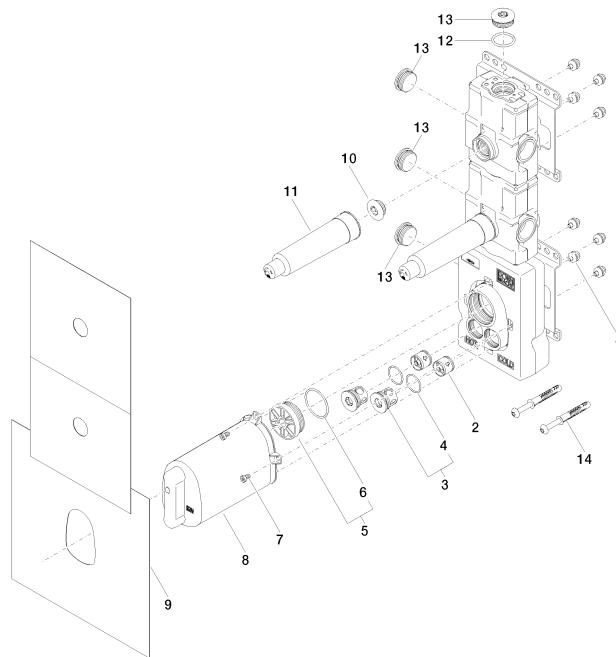
XP P 41-280

## Certificates and sustainability

Belgaqua\_21-031-2 WRAS\_2011

ACS\_21 ACC LY

DVGW\_DW-  
6512DN0



## Spare parts list

| No. | Item Number        | Name                | Quantity used | Delivery time |
|-----|--------------------|---------------------|---------------|---------------|
| 5   | 04 31 20 100 00 90 | plug                | 1.00          | 2             |
| 10  | 04 31 20 006 00 90 | plug                | 2.00          | 2             |
| 3   | 04 21 34 077 00 90 | nipple              | 2.00          | 2             |
| 14  | 04 30 31 054 00 90 | fixing set          | 2.00          | 2             |
| 13  | 09 31 20 003 90    | plug                | 4.00          | 2             |
| 11  | 09 21 02 173 90    | cap                 | 2.00          | 2             |
| 1   | 90 23 01 091 00 90 | set                 | 8.00          | 2             |
| 4   | 09 14 10 098 90    | seal                | 2.00          | 2             |
| 12  | 09 14 10 009 90    | seal                | 1.00          | 2             |
| 2   | 90 23 01 045 00 90 | back-flow preventer | 2.00          | 2             |
| 7   | 09 30 30 112 90    | screw               | 4.00          | 2             |
| 6   | 09 14 10 111 90    | seal                | 1.00          | 2             |
| 8   | 04 21 02 174 01 90 | cap                 | 1.00          | 2             |
| 9   | 04 14 03 073 06 90 | gasket kit          | 1.00          | 2             |