

## RAINMOON Concealed ceiling installation box -

---

35 610 970 90



- concealed rough parts
- Rain panel with 2 different spray modes
- AQUACIRCLE RAIN: Circular rain curtain, max. flow rate 6.8 l/min (at 3 bar)
- TEMPEST RAIN: Natural rain, max. flow rate 5 l/min (at 3 bar)
- Ceiling installation enclosure 1356 x 1356 x 290 mm
- Opening diameter 1252 mm
- Ceiling construction with adequate structural strength for the permanent attachment of the device (weight: 57.5 kg / 127 lbs. (US)). M8 threaded bolts (minimum strength: 2000 N) are required to secure the ceiling module

### Required miscellaneous

---

**Leak protection 3/4" -**

12 012 970 90

- This article is needed 2x.

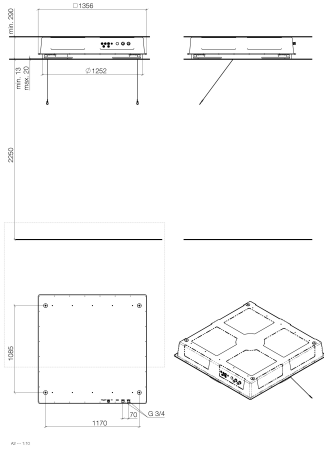




## RAINMOON Concealed ceiling installation box -

---

35 610 970 90



### Codes & Standards

---

DIN 4109

ISO 3822

Ü-Zeichen

### Certificates

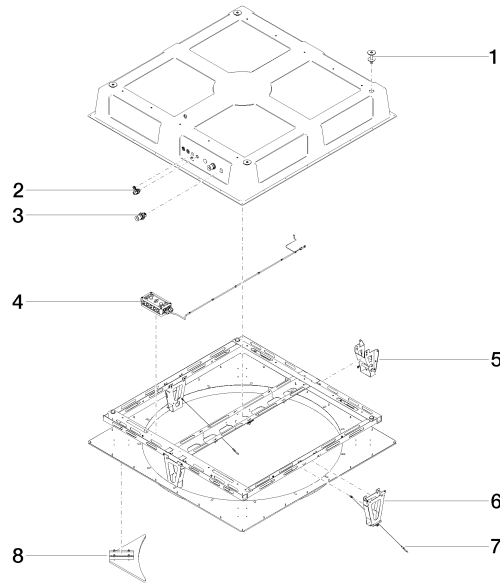
---

LGA\_29

RAINMOON Concealed ceiling installation box -

---

35 610 970 90





## RAINMOON Concealed ceiling installation box -

---

35 610 970 90

### Spare parts list

| No. | Item Number        | Name       | Quantity used | Delivery time |
|-----|--------------------|------------|---------------|---------------|
|     | 04 24 03 287 02 90 | fixing set | 17            | 60            |