

xTOOL Concealed thermostat without volume control 3/4" - Brushed Platinum **SERIES SPECIFIC**

36 503 979 Product version up to 1/1/2022



- cover plate Ø 124 mm
- temperature control handle with safety limit stop at 38°C
- thermostat cartridge
- WRAS

	Brushed Platinum	36 503 979-06
	Chrome	36 503 979-00
	Platinum	36 503 979-08
	Durabrand (23kt Gold)	36 503 979-09
	Dark Chrome	36 503 979-19
	Light Gold	36 503 979-26
	Brushed Light Gold	36 503 979-27
	Brushed Durabrand (23kt Gold)	36 503 979-28
	Matte Black	36 503 979-33
	Brushed Bronze	36 503 979-42
	Brushed Champagne (22kt Gold)	36 503 979-46
	Champagne (22kt Gold)	36 503 979-47
	Brushed Chrome	36 503 979-93
	Brushed Dark Platinum	36 503 979-99

Required miscellaneous

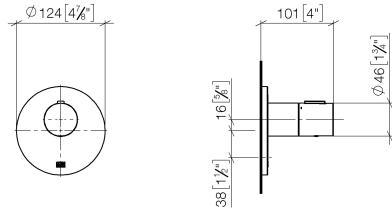


- xTOOL Concealed thermostat module without volume control -** 35 503 970 90
- max. recess depth 110 mm
 - min. recess depth 85 mm

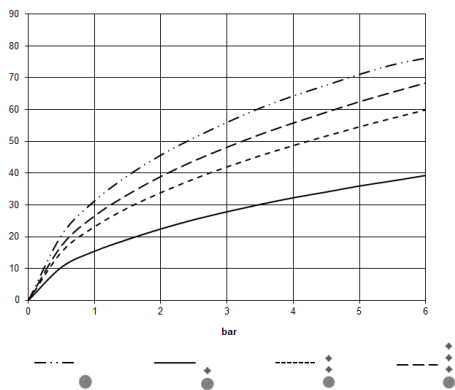
xTOOL Concealed thermostat without volume control 3/4" - Brushed Platinum **SERIES SPECIFIC**

36 503 979 Product version up to 1/1/2022

mm [inches]



Flow rate chart



Codes & Standards

DIN 4109	EN 1111	ISO 3822	Scottish Water Byelaws
UK Water Supply Regulations	Ü-Zeichen		



xTOOL Concealed thermostat without volume control 3/4" - Brushed Platinum

SERIES SPECIFIC

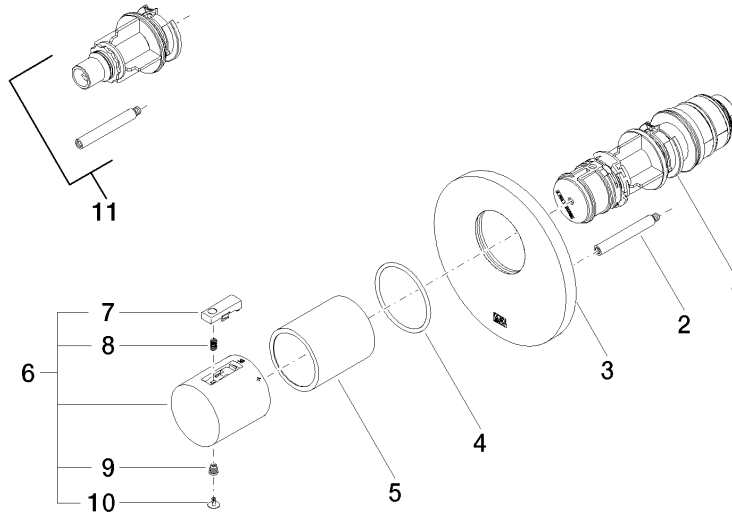
36 503 979 Product version up to 1/1/2022

Certificates and sustainability

WRAS_2011	DVGW_DW-6512DN0	LGA_29	LGA_29
-----------	-----------------	--------	--------

xTOOL Concealed thermostat without volume control 3/4" - Brushed Platinum SERIES SPECIFIC

36 503 979 Product version up to 1/1/2022



Spare parts list

No.	Item Number	Name	Quantity used	Delivery time
3	09 11 02 162-06	cover	1.00	60
8	90 16 02 027 00 90	spring	1.00	2
11	12 178 970 90	Extension 46 mm -	1.00	2
6	90 17 33 004 00-06	handle	1.00	10
10	90 31 20 049 00-13	plug	1.00	30
2	90 31 09 095 00 90	bar	1.00	2
5	90 21 02 112 00-06	sleeve	1.00	10
9	90 30 30 136 00 90	screw	1.00	2
4	90 14 10 049 00 90	seal	1.00	2
7	90 21 33 011 00-13	handle	1.00	2
1	90 15 02 063 00 90	cartridge	1.00	2