

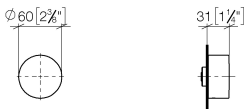


Wall valve clockwise closing 1/2" - Matte Black

SERIES SPECIFIC

36 607 740 Product version from 7/1/2023

mm [inches]



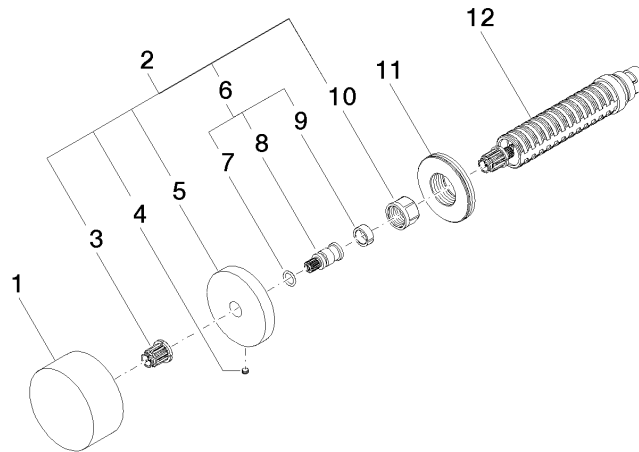
Codes & Standards

ASME A112.18.1	cUPC	DIN 4109	EN 1111
EN 200	ISO 3822	Scottish Water Byelaws	UK Water Supply Regulations

Ü-Zeichen

Certificates and sustainability

DVGW_DW-6501DN0	WRAS_2011	LGA_38	LGA_29	WRAS_2010
DVGW_DW-6512DN0	LGA_29	IAPMO_4976 (



Spare parts list

No.	Item Number	Name	Quantity used	Delivery time
3	90 12 12 002 00 90	fixing cap	1.00	2
11	09 30 01 107 90	sleeve	1.00	2
8	09 29 06 020-33	spindle	1.00	-
Spare part can no longer be ordered, please order the replacement item				
4	09 31 11 055 90	pin	1.00	2
5	09 27 74 004-33	rosette	1.00	30
6	04 29 06 020 00-00	spindle	1.00	10
12	90 90 03 143 00 90	top	1.00	2
2	04 27 74 004 00-33	rosette	1.00	30
1	09 20 74 004-33	handle	1.00	30
9	90 14 15 020 03 90	ring	1.00	2
10	90 23 30 023 00 90	nut	1.00	2
7	90 14 10 060 00 90	seal	1.00	2