







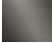
## LISSE Wall-mounted single-lever basin mixer without pop-up waste - Brushed Light Gold

LISSE

36 860 845 Product version from 4/1/2024



- 170mm projection
- fixed spout
- circular, air-enriched flow
- hole diameter spout 37 mm
- hole diameter single-lever mixer 57 mm
- rosette 78 x 78 mm
- max. flow 5.7 l/min
- lead-free
- This product can help a building meet the requirements of Green Building Rating Systems, e.g. LEED®, BREEAM®, DGNB
- WRAS

	Brushed Light Gold	36 860 845-27
	Chrome	36 860 845-00
	Brushed Platinum	36 860 845-06
	Dark Chrome	36 860 845-19
	Matte Black	36 860 845-33
	Brushed Chrome	36 860 845-93
	Brushed Dark Platinum	36 860 845-99

### Required miscellaneous



**Concealed wall-mounted single-lever mixer mixer on right -** 35 816 970 90

•NOTE:Not suitable for concealed installation.Connection by means of angle valves, mounted with screws to back wall.

### Required miscellaneous



**Concealed wall-mounted single-lever mixer -** 35 860 970 90

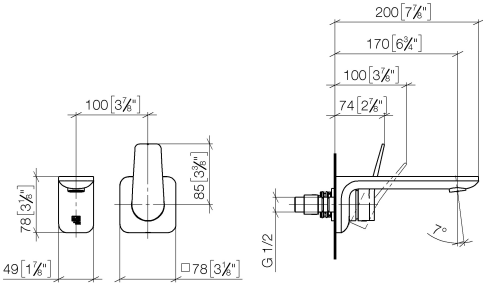
•min. recess depth 80 mm  
•max. recess depth 95 mm  
•mixer can be placed above, to the left or to the right of the spout.



LISSE Wall-mounted single-lever basin mixer without pop-up waste - Brushed Light Gold

LISSE

36 860 845 Product version from 4/1/2024  
mm [inches]



Flow rate chart



Codes & Standards

EN 817	NSF372	NSF61	Scottish Water Byelaws
--------	--------	-------	------------------------

UK Water Supply Regulations



LISSE Wall-mounted single-lever basin mixer without pop-up waste - Brushed  
Light Gold

LISSE

36 860 845    Product version from 4/1/2024

Certificates and sustainability

IAPMO_N-4976	DVGW_DW- 6512DN0	IAPMO_6397	WRAS_2107
--------------	---------------------	------------	-----------

# LISSÉ Wall-mounted single-lever basin mixer without pop-up waste - Brushed Light Gold

LISSÉ

36 860 845 Product version from 4/1/2024

