



- exposed trim parts
- Rain panel with 3 different flow modes
- AQUACIRCLE RAIN: Circular rain curtain, max. flow rate 14 l/min (at 3 bar)
- TEMPEST RAIN: Natural rain, max. flow rate 9 l/min (at 3 bar)
- DIAMOND RAIN: Ring of rain, max. flow rate 6.8 l/min (at 3 bar)

Technical data:

- Outer diameter: 605 mm, opening diameter: 465 mm
- Weight: 6 kg

Electric:

Separate LED power supply

- 350mA (CC)

Input LED power supply

- 350mA (CC)
- Input 100-240V AC 50-60Hz
- Technology: LED, not dimmable

Spot lighting

Output LED power supply

Output specification LED power supply

- IP67
- SELV (Safety Extra Low Voltage)
- Class 2

Ceiling module power supply

- Supply pipe 7 m
- LED colour temperature approx. 3000 K
- Bulbs protected against splashing water
- Provided by customer: Light switch

Environment






Planning tips:

- Not suitable for outdoor use.
- Not suitable for use in a steam room.
- Not suitable for use in chlorinated or salty environments.
- Comply with the protection zone regulations as defined in DIN VDE 0100, Part 701 (IEC 60364-7-701).

Notes:

- Recommended control element: xTool
- Contains energy efficiency class bulbs

Pre-assembly kit for three-way diverter included

	Chrome	41 750 979-00
	Brushed Platinum	41 750 979-06
	Matte Black	41 750 979-33
	Brushed Champagne (22kt Gold)	41 750 979-46
	Champagne (22kt Gold)	41 750 979-47

Required miscellaneous



SERIES-VARIOUS AQUAHALO 35 750 970-00

**Concealed ceiling installation box
- Chrome**

- concealed rough parts
- Ceiling installation enclosure 605 x 605 x 95 mm
- Weight: 10 kg
- min. recess depth 110 mm
- max. recess depth 150 mm
- Pre-assembly kit for three-way diverter included

41 750 979 Product version from 4/1/2024



Flow rate chart



Codes & Standards

DIN 4109

ISO 3822

Scottish Water
Byelaws

UK Water Supply
Regulations

Ü-Zeichen



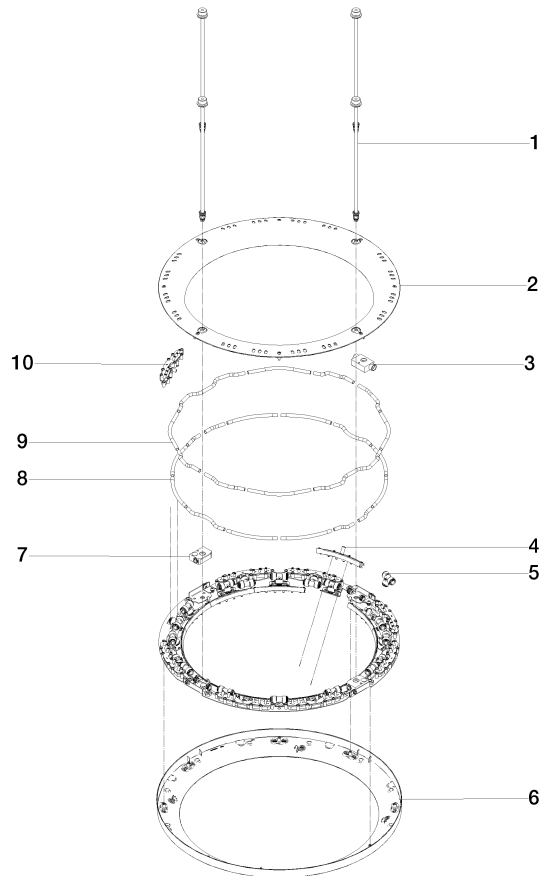
SERIES-VARIOUS AQUAHALO Rain panel - Chrome

SERIES-VARIOUS

41 750 979 Product version from 4/1/2024

Certificates and sustainability

LGA_38 WRAS_250302



Spare parts list

No.	Item Number	Name	Quantity used	Delivery time
2	90 12 05 087 00-00	casing	1.00	10
1	90 28 22 605 01-00	distributor	4.00	10
6	90 12 05 088 00-00	casing	1.00	10
10	90 17 09 061 01 90	jet module TEMPEST	8.00	2
4	90 17 09 060 01 90	jet module	12.00	2
9	90 30 03 117 00 90	hose	1.00	40
8	90 30 03 118 00 90	hose	1.00	2
7	90 24 03 535 00 90	distributor	2.00	2
5	90 24 04 384 00 90	adaptor	20.00	2
3	90 24 03 535 01 90	distributor	2.00	40