

WATER FALL Cascade spout for wall mounting - Chrome

IMO

13 420 979



- 120mm projection
- CASCADE, max. flow rate 26.5 l/min (at 3 bar)
- cover plate 240 x 60 mm
- 1/2" connection
- plug-link mounting
- WRAS 2111005

Fits: IMO, LULU, MADISON, MEM, TARA,
CL.1, LISSÉ, VAIA, META, CYO

| | | |
|--|-------------------------------------|---------------|
|  | Chrome | 13 420 979-00 |
|  | Brushed Platinum | 13 420 979-06 |
|  | Platinum | 13 420 979-08 |
|  | Dark Chrome | 13 420 979-19 |
|  | Light Gold | 13 420 979-26 |
|  | Brushed Light Gold | 13 420 979-27 |
|  | Brushed Durabronze (23kt Gold) | 13 420 979-28 |
|  | Matte Black | 13 420 979-33 |
|  | Brushed Bronze | 13 420 979-42 |
|  | Brushed Champagne (22kt Gold) | 13 420 979-46 |
|  | Champagne (22kt Gold) | 13 420 979-47 |
|  | Brushed Chrome | 13 420 979-93 |

Recommended miscellaneous



- Concealed wall elbow -**
- max. recess depth 163 mm
 - min. recess depth 90 mm

35 085 970 90

Recommended miscellaneous



- Concealed wall elbow -**
- max. recess depth 163 mm
 - min. recess depth 90 mm

35 085 970 90

13 420 979

mm [inches]



Flow rate chart



Trajectory diagram



Codes & Standards

ASME A112.18.1

cUPC

DIN 4109

ISO 3822

Scottish Water
Byelaws

UK Water Supply
Regulations

Ü-Zeichen



WATER FALL Cascade spout for wall mounting - Chrome

IMO

13 420 979

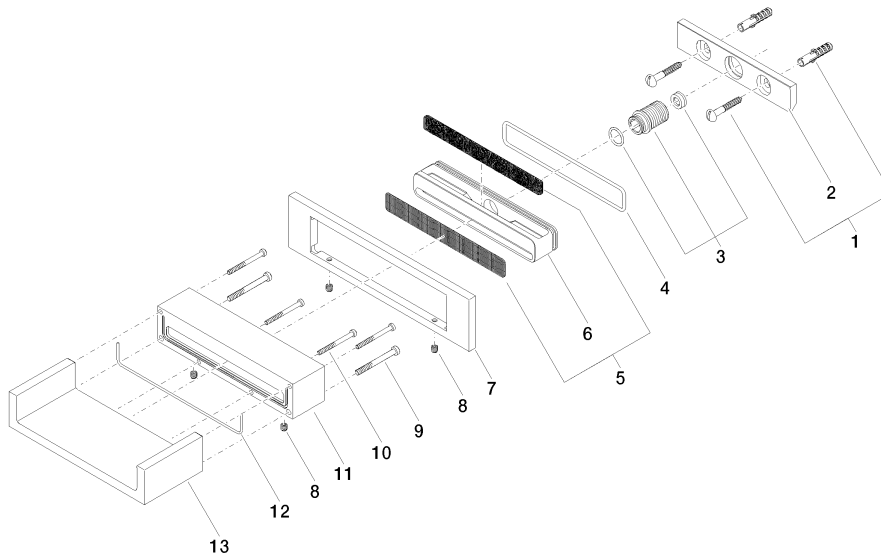
Certificates

IAPMO_4976

WRAS_2111

LGA_18

Product version from 4/1/2023





WATER FALL Cascade spout for wall mounting - Chrome

IMO

13 420 979

Spare parts list

Product version from 4/1/2023

| No. | Item Number | Name | Quantity used | Delivery time |
|-----|--------------------|------------|---------------|---------------|
| | 04 30 31 024 01 90 | fixing set | 20 | 2 |