

## MEM Bath spout without diverter for free-standing assembly - Brushed Dark Brass

MEM

13 672 780 Product version from 9/30/2005



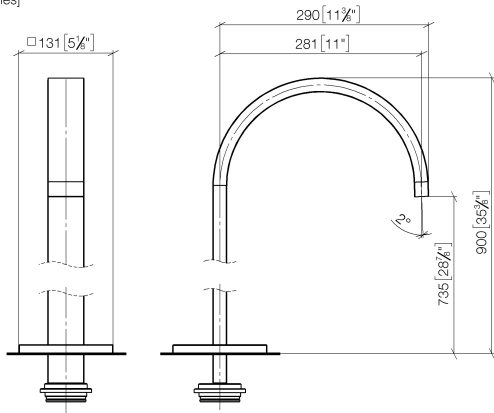
- 280mm projection
- cascade
- total height 830 - 900 mm
- height up to aerator 665 – 735 mm
- push-on rosette 130 x 130 mm
- max. flow 47.8 l/min at 3 bar flow pressure
- WRAS

	Brushed Dark Brass	13 672 780-39
	Chrome	13 672 780-00
	Brushed Platinum	13 672 780-06
	Platinum	13 672 780-08
	Dark Chrome	13 672 780-19
	Brushed Durabronze (23kt Gold)	13 672 780-28
	Brushed Champagne (22kt Gold)	13 672 780-46
	Champagne (22kt Gold)	13 672 780-47

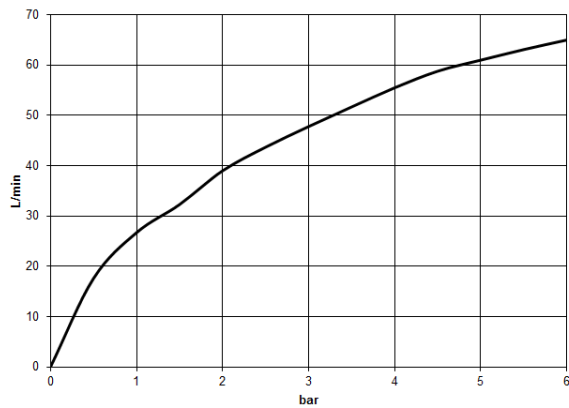
**MEM Bath spout without diverter for free-standing assembly - Brushed Dark Brass**

MEM

13 672 780 Product version from 9/30/2005  
mm [inches]



**Flow rate chart**



**Codes & Standards**

DIN 4109

ISO 3822

Scottish Water  
Byelaws

UK Water Supply  
Regulations

**Ü-Zeichen**



## MEM Bath spout without diverter for free-standing assembly - Brushed Dark Brass

MEM

---

13 672 780 Product version from 9/30/2005

Certificates and sustainability

---

LGA\_18

WRAS\_250602

## MEM Bath spout without diverter for free-standing assembly - Brushed Dark Brass

MEM

13 672 780 Product version from 9/30/2005

Parts for other  
finishes can be found  
here: [Chrome](#)

