

## VAIA Wall-mounted basin spout without pop-up waste - Platinum

VAIA

13 800 809 Product version from 3/13/2017



- 190mm projection
- fixed spout
- circular, air-enriched flow
- hole diameter 37 mm
- rosette Ø 60 mm
- 1/2" connection
- plug-link mounting
- max. flow 5.7 l/min
- lead-free
- WRAS
- This product can help a building meet the requirements of Green Building Rating Systems, e.g. LEED®, BREEAM®, DGNB

For Touchfree control please order eSet Touchfree with temperature adjustment

|  |                                |               |
|--|--------------------------------|---------------|
|   | Platinum                       | 13 800 809-08 |
|   | Chrome                         | 13 800 809-00 |
|   | Brushed Platinum               | 13 800 809-06 |
|   | Dark Chrome                    | 13 800 809-19 |
|   | Brushed Durabronze (23kt Gold) | 13 800 809-28 |
|   | Brushed Dark Brass             | 13 800 809-39 |
|   | Brushed Bronze                 | 13 800 809-42 |
|   | Brushed Champagne (22kt Gold)  | 13 800 809-46 |
|   | Champagne (22kt Gold)          | 13 800 809-47 |
|  | Brushed Dark Platinum          | 13 800 809-99 |

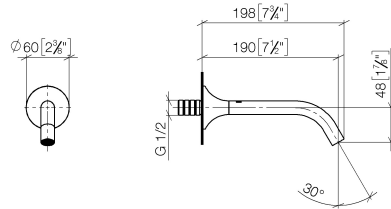
### Recommended miscellaneous



#### Concealed wall elbow -

35 085 970 90

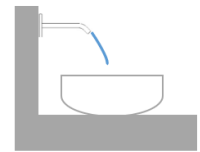
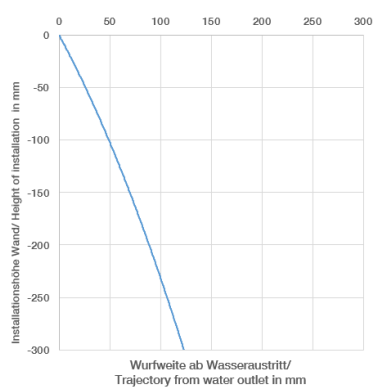
- max. recess depth 163 mm
- min. recess depth 90 mm



Flow rate chart



Trajectory diagram



## Codes & Standards

DIN 4109

ISO 3822

Scottish Water  
Byelaws

UK Water Supply  
Regulations

Ü-Zeichen



## VAIA Wall-mounted basin spout without pop-up waste - Platinum

---

VAIA

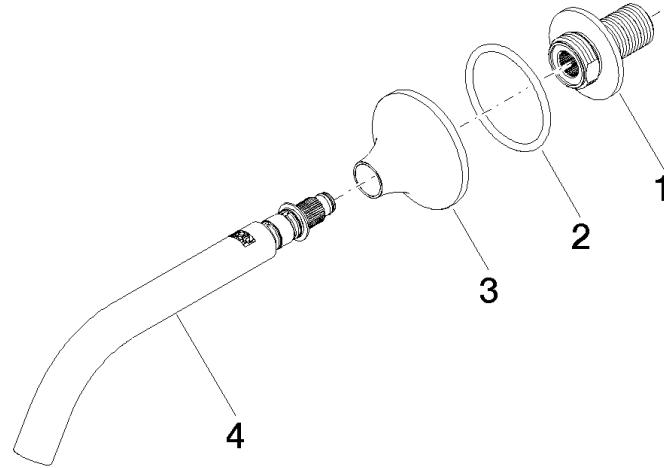
13 800 809 Product version from 3/13/2017

### Certificates and sustainability

---

WRAS\_2306

LGA\_29



### Spare parts list

| No. | Item Number        | Name    | Quantity used | Delivery time |
|-----|--------------------|---------|---------------|---------------|
| 1   | 09 24 03 269 90    | nipple  | 1.00          | 2             |
| 2   | 09 14 10 084 90    | seal    | 1.00          | 2             |
| 4   | 90 28 22 310 00-08 | spout   | 1.00          | 40            |
| 3   | 09 27 80 011-08    | rosette | 1.00          | 40            |