

# TARA ULTRA HOT & COLD WATER DISPENSER - Platinum

TARA ULTRA

17 861 875 Product version from 4/1/2014 to 5/27/2021



- 146mm projection
  - rigid, thermally insulated spout
  - laminar flow
  - height of mixer 288 mm
  - height up to laminar flow regulator 180 mm
  - hole diameter 35 mm
  - provides filtered, hot water up to 93°C
  - provides filtered, cold water
  - max. flow 2 l/min at 3 bar flow pressure
  - ready-to-use control unit for wall mounting (137mm x 159mm x 60mm)
  - electronic magnetic valve
  - 100-230 V, 50-60 Hz, 18 W power supply unit, incl. country-specific adapter set
  - lead-free
  - Spout ring cannot be removed.
  - This product can help a building meet the requirements of Green Building Rating Systems, e.g. LEED®, BREEAM®, DGNB
- A minimum flow pressure of 3 bar is necessary for the HOT & COLD WATER DISPENSER to work perfectly in conjunction with a hot water tank and filter.**
- The installation must be above a kitchen sink.**
- The filter cartridge must be changed every six months. The installation instructions contain further information for guidance.**
- Detailed planning information and technical data can be found at [www.dornbracht.com/professional](http://www.dornbracht.com/professional)**
- Not compatible with reverse osmosis filtration**

A minimum flow pressure of 3 bar is necessary for the HOT & COLD WATER DISPENSER to work perfectly in conjunction with a hot water tank and filter.

The installation must be above a kitchen sink.

The filter cartridge must be changed every six months. The installation instructions contain further information for guidance.

Detailed planning information and technical data can be found at [www.dornbracht.com/professional](http://www.dornbracht.com/professional)

Not compatible with reverse osmosis filtration

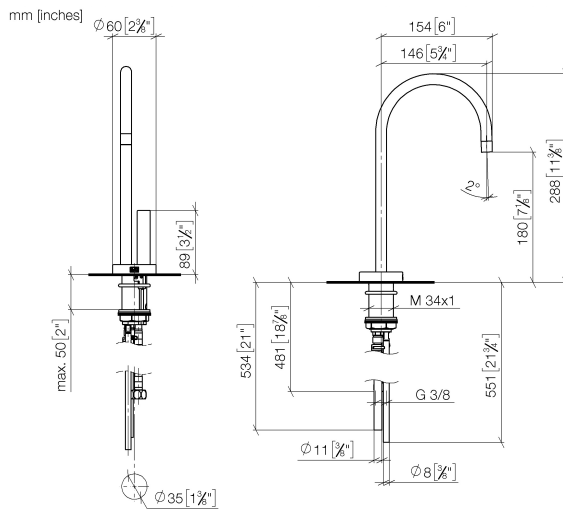
|   |                               |               |
|---|-------------------------------|---------------|
|    | Platinum                      | 17 861 875-08 |
|    | Chrome                        | 17 861 875-00 |
|    | Brushed Platinum              | 17 861 875-06 |
|    | Durabrand (23kt Gold)         | 17 861 875-09 |
|    | Dark Chrome                   | 17 861 875-19 |
|    | Brushed Durabrand (23kt Gold) | 17 861 875-28 |
|    | Matte Black                   | 17 861 875-33 |
|    | Brushed Champagne (22kt Gold) | 17 861 875-46 |
|    | Champagne (22kt Gold)         | 17 861 875-47 |
|   | Brushed Chrome                | 17 861 875-93 |
|  | Brushed Dark Platinum         | 17 861 875-99 |

## Required miscellaneous

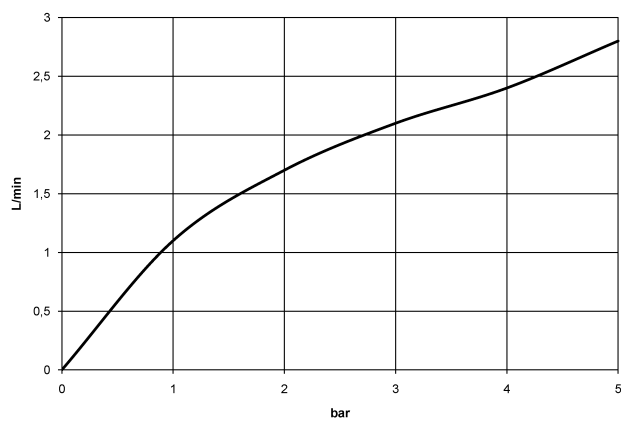


**Hot water tank incl. filter - 12 892 970 90**

17 861 875 Product version from 4/1/2014 to 5/27/2021



### Flow rate chart



## Codes & Standards

|                |        |          |                             |
|----------------|--------|----------|-----------------------------|
| ASME A112.18.1 | cUPC   | DIN 4109 | Executive Order<br>no. 1007 |
| ISO 3822       | NSF372 | NSF61    | Ü-Zeichen                   |



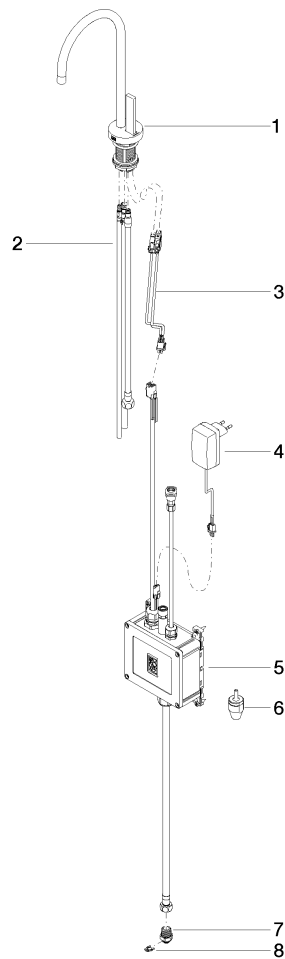
TARA ULTRA HOT & COLD WATER DISPENSER - Platinum

TARA ULTRA

17 861 875    Product version from 4/1/2014 to 5/27/2021

Certificates and sustainability

|           |            |          |        |         |
|-----------|------------|----------|--------|---------|
| IAPMO_N-4 | IAPMO_4976 | GDV_0400 | LGA_28 | IAPMO_6 |
|-----------|------------|----------|--------|---------|



## Spare parts list

| No. | Item Number        | Name                   | Quantity used | Delivery time |
|-----|--------------------|------------------------|---------------|---------------|
| 6   | 90 24 04 291 00 90 | insert                 | 1.00          | 2             |
| 8   | 09 16 01 045 90    | ring                   | 1.00          | 2             |
| 3   | 90 10 01 048 00 90 | electronic accessories | 1.00          | 2             |
| 2   | 90 30 04 067 00 90 | hose                   | 1.00          | 2             |
| 1   | 90 17 85 100 05-08 | fitting                | 1.00          | 40            |
| 7   | 09 24 04 293 90    | nipple                 | 1.00          | 2             |
| 4   | 04 10 01 050 00 90 | power supply           | 1.00          | 60            |
| 5   | 90 11 11 064 01 90 | electronic accessories | 1.00          | 2             |