

TARA Deck valve clockwise closing - Brushed Platinum

TARA

20 000 882



- hole diameter 32 mm
- rosette Ø 55 mm
- WRAS 2112061



Brushed Platinum

20 000 882-06

Brushed Bronze

20 000 882-42

Brushed
Champagne (22kt
Gold)

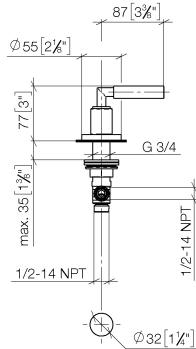
20 000 882-46

Champagne (22kt
Gold)

20 000 882-47

20 000 882

mm [inches]



Flow rate chart



Codes & Standards

ASME A112.18.1

cUPC

Scottish Water
Byelaws

UK Water Supply
Regulations



TARA Deck valve clockwise closing - Brushed Platinum

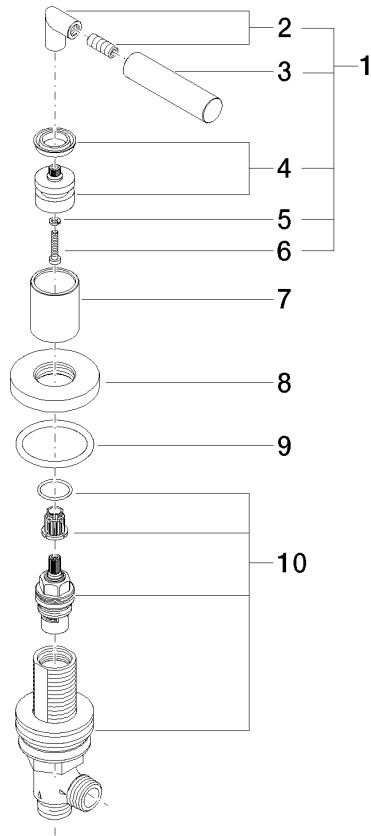
TARA

20 000 882

Certificates

IAPMO_4976

WRAS_2112





TARA Deck valve clockwise closing - Brushed Platinum

TARA

20 000 882

Spare parts list

No.	Item Number	Name	Quantity used	Delivery time
	04 20 88 052 00-06	handle	10	10