

## TARA Three-hole basin mixer with pop-up waste - Matte Black

20 705 882 Product version from 4/1/2024



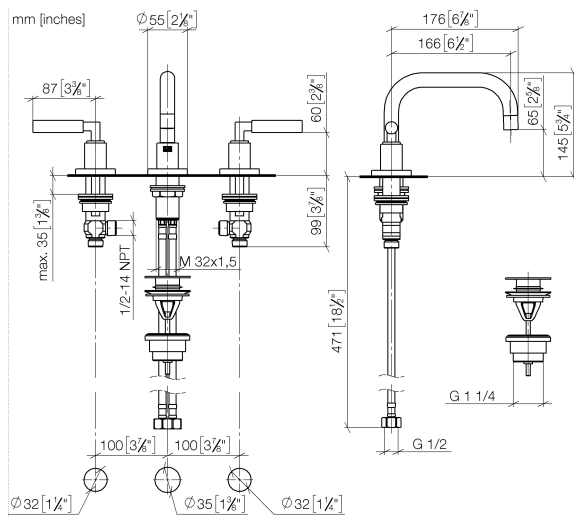
- 166mm projection
- pivotable spout 360°
- circular, air-enriched flow
- height of mixer 145 mm
- height up to aerator 65 mm
- hole diameter valve 32 mm
- hole diameter spout 35 mm
- rosette Ø 55 mm
- 2x screw-in M 10 x 1 pressure hose, leak-tested
- max. flow 5.7 l/min
- lead-free
- This product can help a building meet the requirements of Green Building Rating Systems, e.g. LEED®, BREEAM®, DGNB
- WRAS

Only suitable for basins with an overflow.

|   |                                |               |
|---|--------------------------------|---------------|
|    | Matte Black                    | 20 705 882-33 |
|    | Chrome                         | 20 705 882-00 |
|    | Brushed Platinum               | 20 705 882-06 |
|    | Platinum                       | 20 705 882-08 |
|    | Dark Chrome                    | 20 705 882-19 |
|    | Brushed Durabronze (23kt Gold) | 20 705 882-28 |
|    | Brushed Bronze                 | 20 705 882-42 |
|    | Brushed Champagne (22kt Gold)  | 20 705 882-46 |
|    | Champagne (22kt Gold)          | 20 705 882-47 |
|   | Brushed Chrome                 | 20 705 882-93 |
|  | Brushed Dark Platinum          | 20 705 882-99 |

## TARA Three-hole basin mixer with pop-up waste - Matte Black

20 705 882 Product version from 4/1/2024



### Flow rate chart



### Codes & Standards

DIN 4109

Executive Order  
no. 1007

ISO 3822

Scottish Water  
Byelaws

UK Water Supply  
Regulations

Ü-Zeichen



TARA Three-hole basin mixer with pop-up waste - Matte Black

---

20 705 882    Product version from 4/1/2024

Certificates

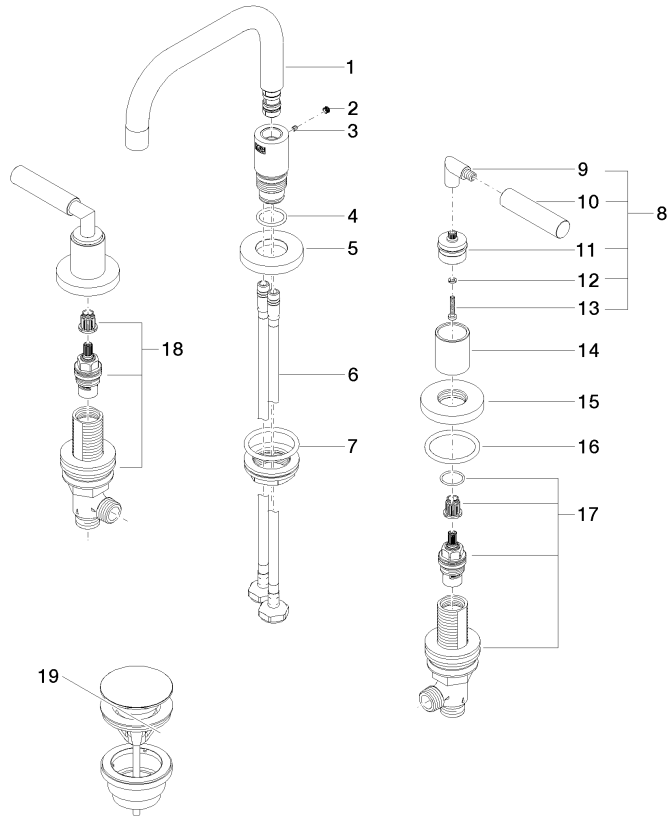
---

|        |          |           |
|--------|----------|-----------|
| LGA_38 | GDV_0400 | WRAS_2303 |
|--------|----------|-----------|

## TARA Three-hole basin mixer with pop-up waste - Matte Black

20 705 882 Product version from 4/1/2024

Parts for other  
finishes can be found  
here: [Chrome](#)



### Spare parts list

| No. | Item Number        | Name   | Quantity used | Delivery time |
|-----|--------------------|--|---------------|---------------|
| 1   | 90 28 22 370 00-33 | spout  | 1             | 30            |
| 2   | 90 31 20 109 00 90 | plug   | 1             | 2             |
| 3   | 09 31 11 099 90    | pin  | 1             | 2             |
| 4   | 09 14 10 015 90    | seal   | 1             | 2             |
| 5   | 09 28 10 140-33    | ring   | 1             | 2             |
| 6   | 04 30 04 019 00 90 | hose   | 2             | 2             |
| 7   | 04 23 10 009 02 90 | fixing set   | 1             | 2             |
| 8   | 04 20 88 052 10-33 | handle   | 2             | 60            |
| 9   | 04 18 20 022 00-33 | angle  | 2             | 30            |
| 10  | 09 20 88 052-33    | handle   | 2             | 30            |
| 11  | 90 12 12 219 00-33 | base   | 2             | 30            |
| 12  | 90 30 11 029 00 90 | disc   | 2             | 2             |
| 13  | 90 30 30 075 00 90 | screw  | 2             | 2             |
| 14  | 09 21 02 140-33    | sleeve   | 2             | 30            |
| 15  | 09 27 89 105-33    | rosette  | 2             | 30            |
| 16  | 90 14 10 043 00 90 | seal   | 2             | 2             |
| 17  | 90 17 11 040 50 90 | side panel   | 1             | 2             |
| 18  | 90 17 11 040 51 90 | side panel   | 1             | 2             |
| 19  | 10 125 970-33      | Basin Waste with push fastening 1 1/4" - Matte Black | 1             | 2             |