

## IMO Three-hole basin mixer with pop-up waste - Brushed Platinum




IMO

20 713 670



- 165mm projection
- fixed spout
- rectangular, air-enriched flow
- height of mixer 220 mm
- height up to aerator 170 mm
- hole diameter valve 32 mm
- hole diameter spout 35 mm
- rosette 60 x 60 mm
- 2x screw-in M 10 x 1 pressure hose, leak-tested
- max. flow 5 l/min
- lead-free
- WRAS 2212011
- This product can help a building meet the requirements of Green Building Rating Systems, e.g. LEED®, BREEAM®, DGNB

Only suitable for basins with an overflow.

|  |                  |               |
|--|------------------|---------------|
|  | Brushed Platinum | 20 713 670-06 |
|  | Chrome           | 20 713 670-00 |
|  | Brushed Chrome   | 20 713 670-93 |

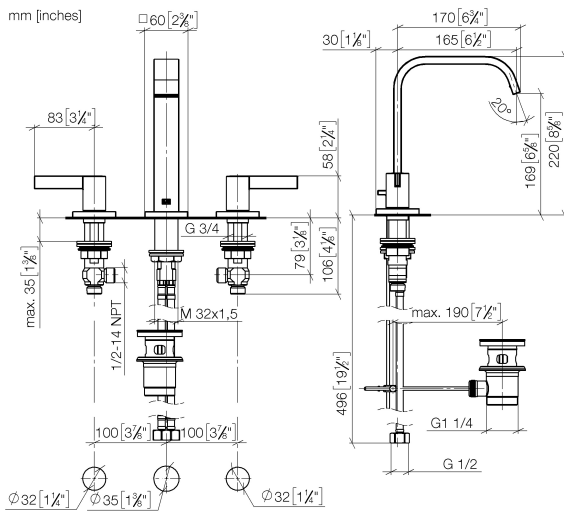
### Recommended miscellaneous



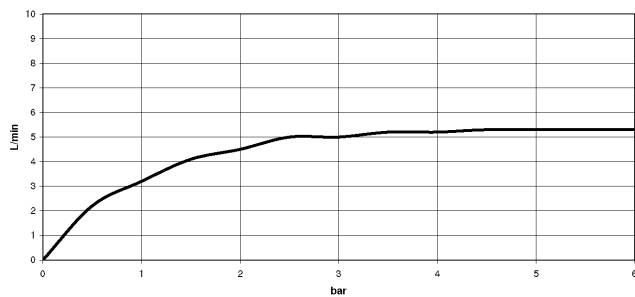
- High pressure hoses -**
- 2x 3/8" x 1/2" x 500mm high pressure hose

12 506 970 90

20 713 670



### Flow rate chart



## Codes & Standards

DIN 4109

ISO 3822

Scottish Water  
Byelaws

## UK Water Supply Regulations

## Ü-Zeichen



## IMO Three-hole basin mixer with pop-up waste - Brushed Platinum

---

IMO

20 713 670

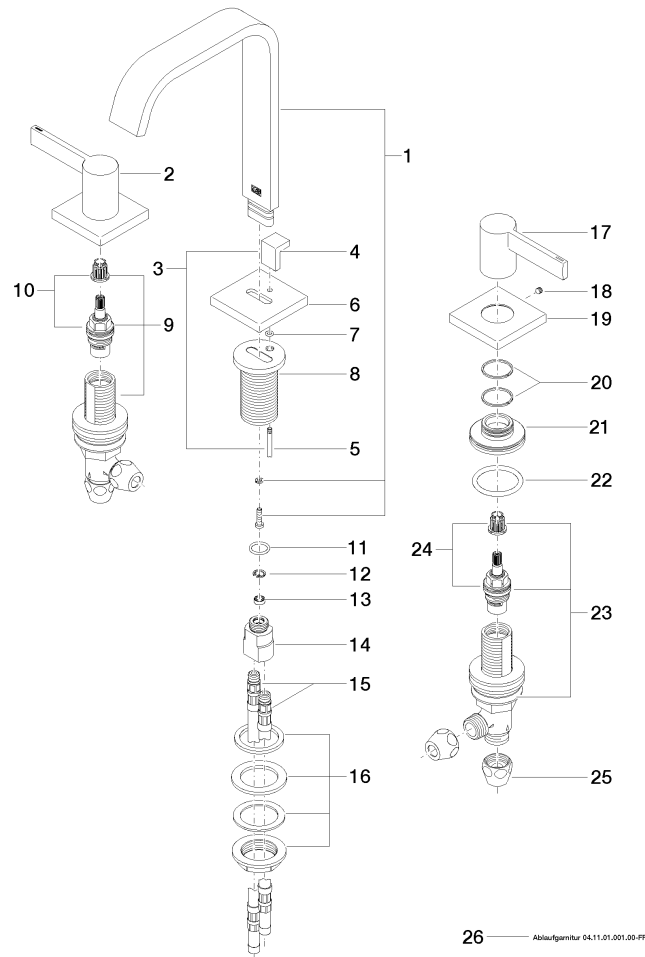
### Certificates

---

WRAS\_2212

LGA\_28

**Product version from 4/1/2014**





## IMO Three-hole basin mixer with pop-up waste - Brushed Platinum

IMO

20 713 670

### Spare parts list

#### Product version from 4/1/2014

| No. | Item Number        | Name  | Quantity used | Delivery time |
|-----|--------------------|-------|---------------|---------------|
|     | 90 28 22 267 00-06 | spout | 36            | 10            |