

TARA Single-hole basin mixer with pop-up waste - Brushed Platinum

22 513 892 Product version from 5/27/2021



- 165mm projection
- pivotable spout 360°
- circular, air-enriched flow
- height of mixer 295 mm
- height up to aerator 172 mm
- hole diameter 35 mm
- rosette Ø 59 mm
- 2x screw-in M 10 x 1 pressure hose, leak-tested
- max. flow 7 l/min
- lead-free
- This product can help a building meet the requirements of Green Building Rating Systems, e.g. LEED®, BREEAM®, DGNB
- WRAS

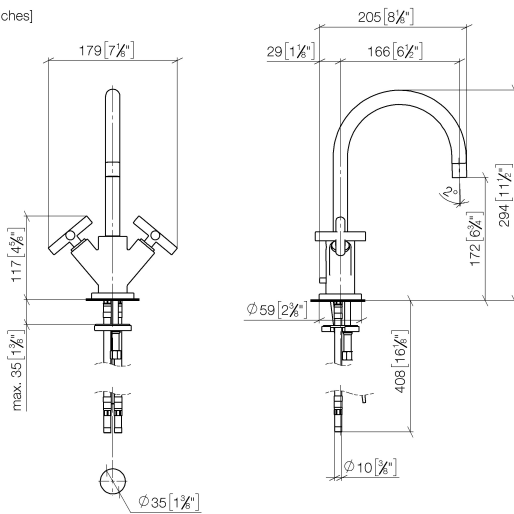
Only suitable for basins with an overflow.

| | | |
|---|--------------------------------|---------------|
|  | Brushed Platinum | 22 513 892-06 |
|  | Chrome | 22 513 892-00 |
|  | Platinum | 22 513 892-08 |
|  | Dark Chrome | 22 513 892-19 |
|  | Brushed Durabronze (23kt Gold) | 22 513 892-28 |
|  | Matte Black | 22 513 892-33 |
|  | Brushed Bronze | 22 513 892-42 |
|  | Brushed Champagne (22kt Gold) | 22 513 892-46 |
|  | Champagne (22kt Gold) | 22 513 892-47 |
|  | Brushed Chrome | 22 513 892-93 |
|  | Brushed Dark Platinum | 22 513 892-99 |

TARA Single-hole basin mixer with pop-up waste - Brushed Platinum

22 513 892 Product version from 5/27/2021

mm [inches]



Flow rate chart



Codes & Standards

DIN 4109

EN 200

Executive Order
no. 1007

ISO 3822

Scottish Water
Byelaws

UK Water Supply
Regulations

Ü-Zeichen

VA-Zeichen



TARA Single-hole basin mixer with pop-up waste - Brushed Platinum

22 513 892 Product version from 5/27/2021

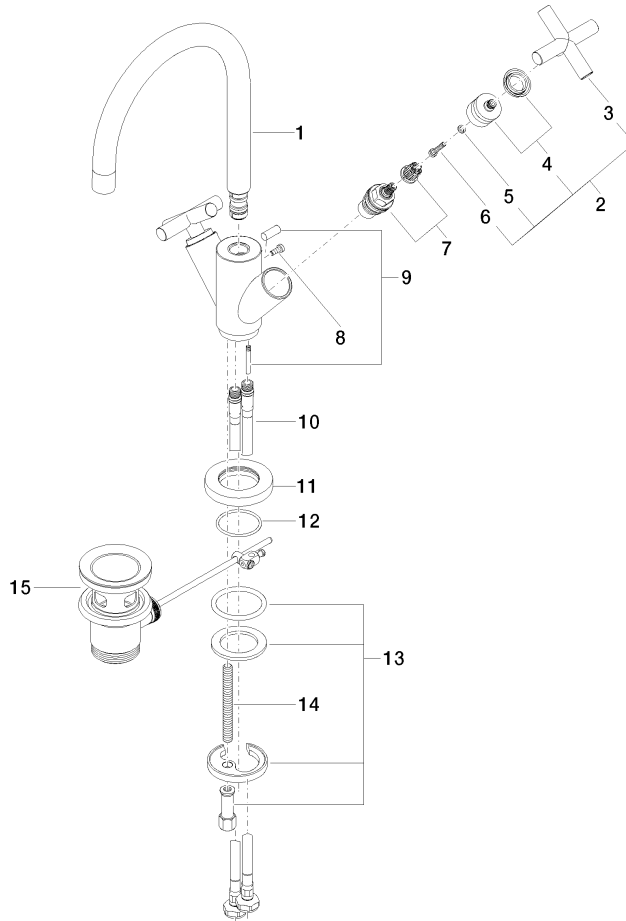
Certificates

| | | | |
|--------|--------|----------|-------------|
| ETA_18 | LGA_18 | GDV_0400 | WRAS_240702 |
|--------|--------|----------|-------------|

TARA Single-hole basin mixer with pop-up waste - Brushed Platinum

22 513 892 Product version from 5/27/2021

Parts for other
finishes can be found
here: [Chrome](#)



Spare parts list

| No. | Item Number | Name | Quantity used | Delivery time |
|-----|--------------------|--------------|---------------|---------------|
| 1 | 90 28 22 213 01-06 | spout | 1 | 10 |
| 2 | 90 20 89 010 10-06 | handle | 2 | 10 |
| 3 | 09 20 89 010-06 | handle | 2 | 60 |
| 4 | 90 12 12 007 00-06 | base | 2 | 10 |
| 5 | 90 30 11 029 00 90 | disc | 2 | 2 |
| 6 | 90 30 30 075 00 90 | screw | 2 | 2 |
| 7 | 90 90 03 151 00 90 | top | 2 | 2 |
| 8 | 09 30 30 054 90 | screw | 1 | 2 |
| 9 | 04 20 89 035 80-06 | pull-rod | 1 | 10 |
| 10 | 04 30 04 104 00 90 | hose | 2 | 2 |
| 11 | 09 28 10 132-06 | ring | 1 | 10 |
| 12 | 09 14 10 134 90 | seal | 1 | 2 |
| 13 | 04 30 11 038 00 90 | fixing set | 1 | 2 |
| 14 | 09 31 11 011 90 | pin | 1 | 2 |
| 15 | 90 11 01 001 00-06 | pop-up waste | 1 | 10 |