

## TARA Single-hole basin mixer with raised base without pop-up waste - Brushed Platinum



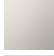





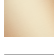


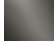
TARA

22 533 892 Product version from 6/30/2009 to 5/27/2021



- 200mm projection
- pivotable spout 360°
- circular, air-enriched flow
- height of mixer 425 mm
- height up to aerator 280 mm
- hole diameter 35 mm
- rosette Ø 59 mm
- 2x screw-in M 10 x 1 pressure hose, leak-tested
- max. flow 7 l/min
- lead-free
- This product can help a building meet the requirements of Green Building Rating Systems, e.g. LEED®, BREEAM®, DGNB
- WRAS

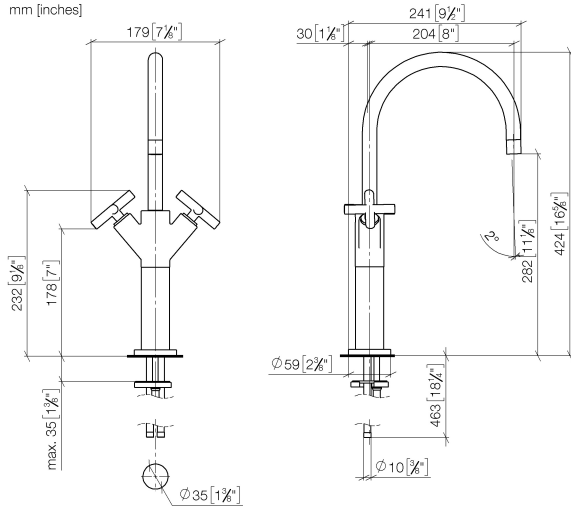
for use on countertop bowls

	Brushed Platinum	22 533 892-06
	Chrome	22 533 892-00
	Platinum	22 533 892-08
	Dark Chrome	22 533 892-19
	Brushed Durabrass (23kt Gold)	22 533 892-28
	Matte Black	22 533 892-33
	Brushed Dark Brass	22 533 892-39
	Brushed Bronze	22 533 892-42
	Brushed Champagne (22kt Gold)	22 533 892-46
	Champagne (22kt Gold)	22 533 892-47
	Brushed Chrome	22 533 892-93
	Brushed Dark Platinum	22 533 892-99

# TARA Single-hole basin mixer with raised base without pop-up waste - Brushed Platinum

TARA

22 533 892 Product version from 6/30/2009 to 5/27/2021  
mm [inches]



## Flow rate chart



## Codes & Standards

DIN 4109

EN 200

Executive Order  
no. 1007

ISO 3822

Scottish Water  
Byelaws

UK Water Supply  
Regulations

Ü-Zeichen

VA-Zeichen



TARA Single-hole basin mixer with raised base without pop-up waste - Brushed  
Platinum

TARA

22 533 892    Product version from 6/30/2009 to 5/27/2021

Certificates and sustainability

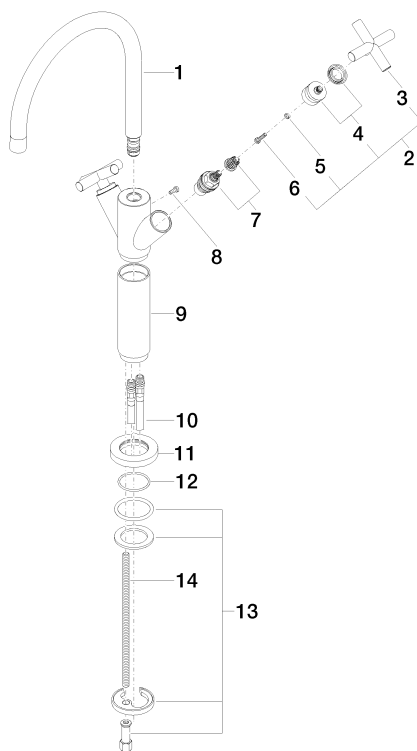
ETA_18	LGA_18	GDV_0400	WRAS_240702
--------	--------	----------	-------------

# TARA Single-hole basin mixer with raised base without pop-up waste - Brushed Platinum

TARA

22 533 892 Product version from 6/30/2009 to 5/27/2021

Parts for other finishes can be found here: [Chrome](#)



## Spare parts list

No.	Item Number	Name	Quantity used	Delivery time
	11 09 28 10 132-06	ring	1.00	10
	13 04 30 11 038 00 90	fixing set	1.00	2
	14 09 31 11 000 90	pin	1.00	2
	4 90 12 12 007 00-06	base	2.00	10
	9 09 18 40 063-06	sleeve	1.00	10
	3 09 20 89 010-06	handle	2.00	60
	1 90 28 22 214 01-06	spout	1.00	-
Spare part can no longer be ordered, please order the replacement item				
	8 09 30 30 054 90	screw	1.00	2
	10 04 30 04 105 00 90	hose	2.00	2
	12 09 14 10 134 90	seal	1.00	2
	7 90 90 03 151 00 90	top	2.00	2
	6 90 30 30 075 00 90	screw	2.00	2
	5 90 30 11 029 00 90	disc	2.00	2
	2 90 20 89 010 10-06	handle	2.00	10