

TARA Angle valve - Dark Chrome

TARA

22 900 892

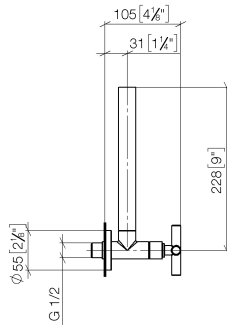


- rosette Ø 55 mm
- hose covering 200mm, for shortening

| | | |
|---|-------------------------------------|---------------|
|  | Dark Chrome | 22 900 892-19 |
|  | Chrome | 22 900 892-00 |
|  | Brushed Platinum | 22 900 892-06 |
|  | Platinum | 22 900 892-08 |
|  | Brushed Durabronze (23kt Gold) | 22 900 892-28 |
|  | Matte Black | 22 900 892-33 |
|  | Brushed Bronze | 22 900 892-42 |
|  | Brushed Champagne (22kt Gold) | 22 900 892-46 |
|  | Champagne (22kt Gold) | 22 900 892-47 |
|  | Brushed Dark Platinum | 22 900 892-99 |

22 900 892

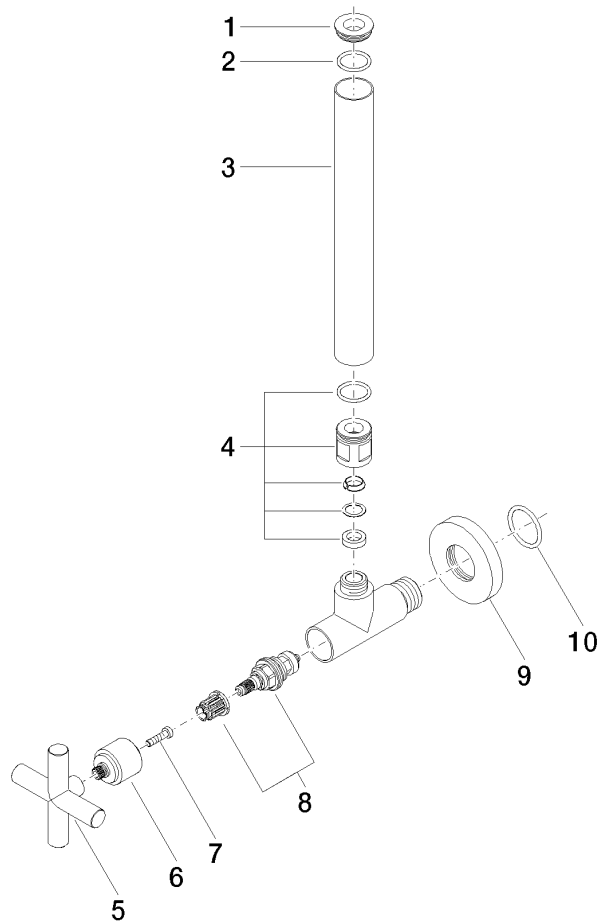
mm [inches]



Flow rate chart



Parts for other
finishes can be found
here: [Chrome](#)





TARA Angle valve - Dark Chrome

TARA

22 900 892

Spare parts list