

Hand shower set for bath rim or tile edge installation - Platinum

SERIES SPECIFIC

27 702 979 Product version up to 5/15/2020

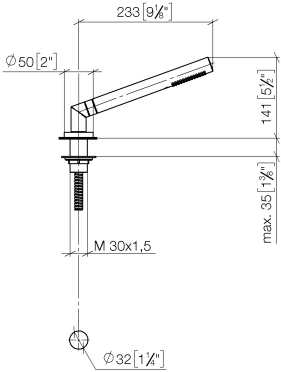


- COMPACT RAIN, max. flow rate 6.8 l/min (at 3 bar)
- with anti-scale system
- rosette Ø 50 mm
- hole diameter 32 mm
- metal shower hose 1750mm with integrated anti-twist protection
- WRAS

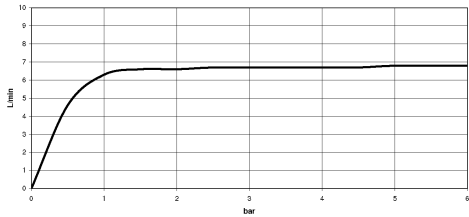
Two-piece design allows hose to later be changed without dismantling the fitting.
Intrinsic protection against back flow.

	Platinum	27 702 979-08
	Chrome	27 702 979-00
	Brushed Platinum	27 702 979-06
	Durabrand (23kt Gold)	27 702 979-09
	Dark Chrome	27 702 979-19
	Brushed Light Gold	27 702 979-27
	Brushed Durabrand (23kt Gold)	27 702 979-28
	Matte Black	27 702 979-33
	Brushed Dark Brass	27 702 979-39
	Brushed Bronze	27 702 979-42
	Brushed Champagne (22kt Gold)	27 702 979-46
	Champagne (22kt Gold)	27 702 979-47
	Brushed Chrome	27 702 979-93
	Brushed Dark Platinum	27 702 979-99

mm [inches]



Flow rate chart



Codes & Standards

ASME A112.18.1	cUPC	DIN 4109	EN 1717
ISO 3822	Scottish Water Byelaws	UK Water Supply Regulations	Ü-Zeichen



Hand shower set for bath rim or tile edge installation - Platinum

SERIES SPECIFIC

27 702 979 Product version up to 5/15/2020

Certificates and sustainability

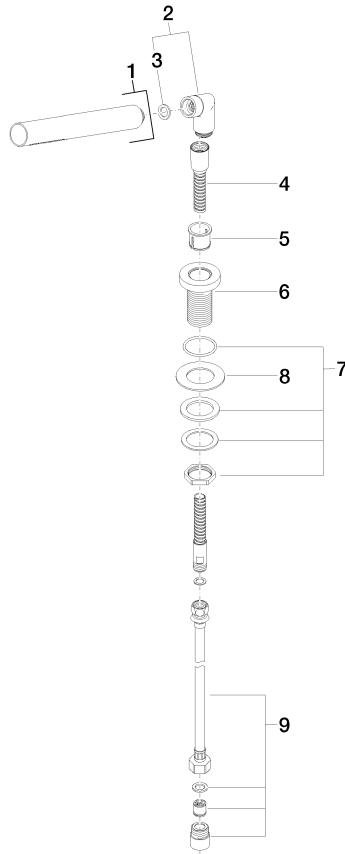
LGA_29 IAPMO_4976 Belgaqua_21-383-2 WRAS_2209

Hand shower set for bath rim or tile edge installation - Platinum

SERIES SPECIFIC

27 702 979 Product version up to 5/15/2020

Parts for other finishes can be found here: [Chrome](#)



Spare parts list

No.	Item Number	Name	Quantity used	Delivery time
2	04 24 04 189 00-08	nipple	1.00	40
8	09 30 11 060 90	disc	1.00	2
1	28 019 979-08	Hand shower - Platinum	1.00	-
Spare part can no longer be ordered, please order the replacement item				
7	04 30 11 038 66 90	fixing set	1.00	2
6	09 30 01 085-08	rosette	1.00	40
9	12 505 970 90	High pressure hose 1/2" x 3/8" x 500 mm -	1.00	2
4	28 322 970-08	Metal shower hose 1/2" x 3/8" x 1750 mm - Platinum	1.00	40
3	90 14 20 002 00 90	seal	1.00	2
5	90 18 40 085 00 90	sleeve	1.00	2