

## VAIA Rinsing spray set - Matte Black

27 731 809 Product version from 3/1/2023



- with round rosette
- spray flow
- automatic spout/shower diverter
- height of mixer 202 mm
- hole diameter rinsing spray 32mm
- fabric braided hose 1500 mm
- sprayface with anti-scaling system
- lead-free

Can only be combined with 33810809, 33826809, 19815809, 19825809.

Intrinsic protection against back flow.

Residual water may emerge from the spray after closing.

Operating unit can be positioned freely.

	Matte Black	27 731 809-33
	Chrome	27 731 809-00
	Brushed Platinum	27 731 809-06
	Platinum	27 731 809-08
	Durabrass (23kt Gold)	27 731 809-09
	Dark Chrome	27 731 809-19
	Brushed Durabrass (23kt Gold)	27 731 809-28
	Brushed Champagne (22kt Gold)	27 731 809-46
	Champagne (22kt Gold)	27 731 809-47
	Brushed Chrome	27 731 809-93
	Brushed Dark Platinum	27 731 809-99

# VAIA Rinsing spray set - Matte Black

27 731 809    Product version from 3/1/2023



## Codes & Standards

DIN 4109	EN 1717	ISO 3822	NSF372
NSF61	Ü-Zeichen		

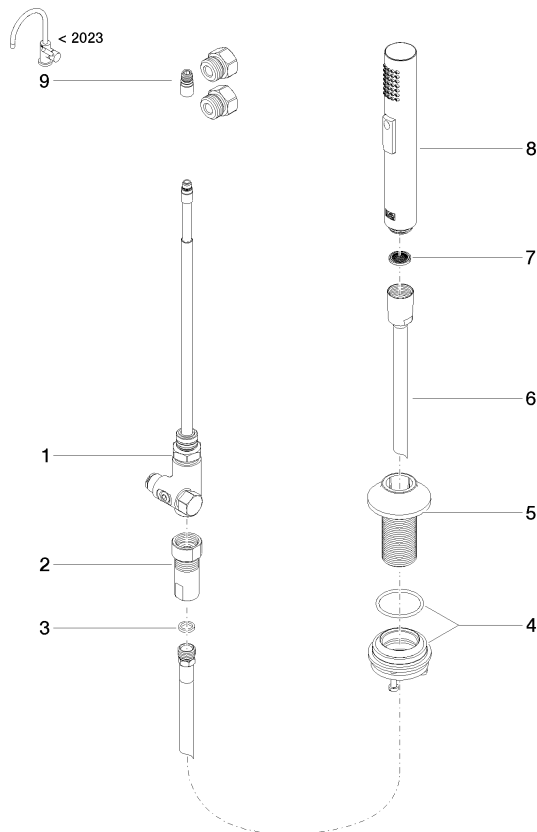
## Certificates

LGA_29	Belgaqua_24-005-2	IAPMO_N-4976	IAPMO_6397
--------	-------------------	--------------	------------

## VAIA Rinsing spray set - Matte Black

27 731 809 Product version from 3/1/2023

Parts for other  
finishes can be found  
here: [Chrome](#)



### Spare parts list

No.	Item Number	Name	Quantity used	Delivery time
1	90 17 09 046 12 90	diverter	1	2
2	90 24 03 241 00 90	nipple	1	2
3	90 14 20 019 00 90	seal	1	2
4	04 23 10 047 00 92	fixing set	1	60
5	90 30 01 142 00-33	shaft	1	-
Spare part can no longer be ordered, please order the replacement item				
6	90 30 02 062 00-33	hose	1	30
7	09 23 01 039 90	sieve	1	2
8	04 12 11 158 00-33	shower	1	2
9	90 17 09 046 14 90	conversion kit	1	2