

Affusion pipe with cover plate - Platinum

IMO



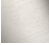






27 838 979



Fits: IMO, MEM, CL.1, CYO

- LAMINAR FLOW, max. flow rate 15 l/min (at 3 bar)
- 3/8" shower outlet
- cover plate 240 x 60 mm
- metal shower hose 1250mm with integrated anti-twist protection
- 1/2" connection
- plug-link mounting

Intrinsic protection against back flow.

| | | |
|--|-----------------------------------|---------------|
|  | Platinum | 27 838 979-08 |
|  | Chrome | 27 838 979-00 |
|  | Brushed Platinum | 27 838 979-06 |
|  | Dark Chrome | 27 838 979-19 |
|  | Brushed Light Gold | 27 838 979-27 |
|  | Brushed Durabronze (23kt Gold) | 27 838 979-28 |
|  | Matte Black | 27 838 979-33 |
|  | Brushed Chrome | 27 838 979-93 |
|  | Brushed Dark Platinum | 27 838 979-99 |

Recommended miscellaneous



Concealed wall elbow -

35 085 970 90

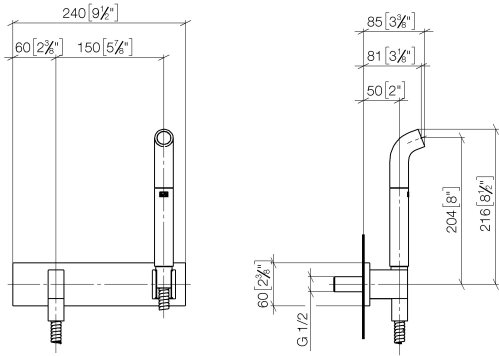
- max. recess depth 163 mm
- min. recess depth 90 mm

Affusion pipe with cover plate - Platinum

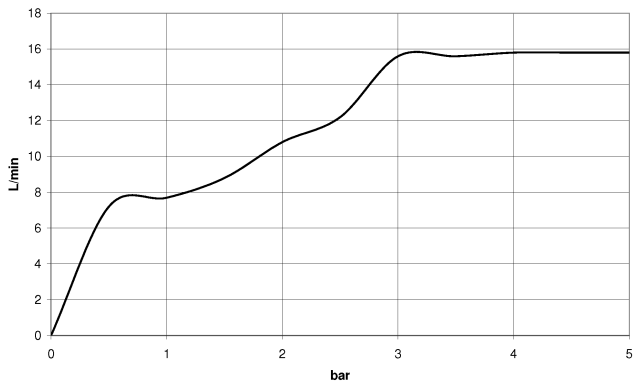
IMO

27 838 979

mm [inches]



Flow rate chart



Codes & Standards

DIN 4109

EN 1717

ISO 3822

Ü-Zeichen



Affusion pipe with cover plate - Platinum

IMO

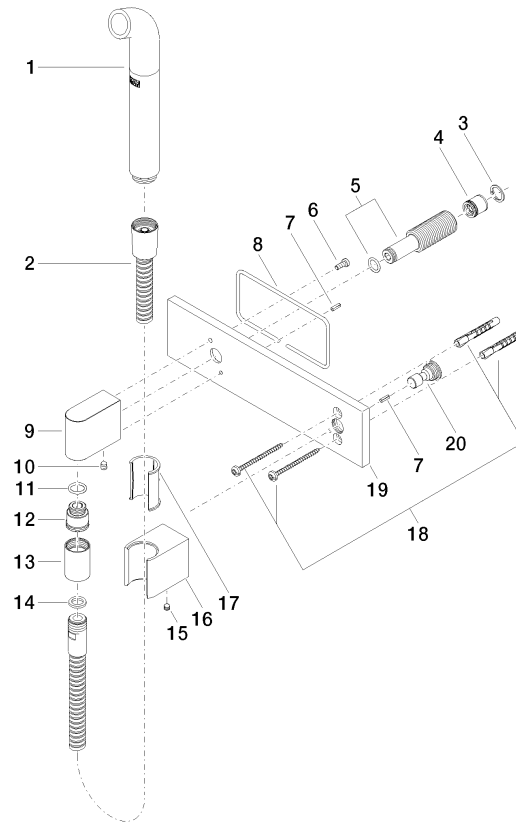
27 838 979

Certificates

Belgaqua_21-023-2 LGA_38

Product version up to 3/2/2021

Product version from 3/2/2021





Affusion pipe with cover plate - Platinum

IMO

27 838 979

Spare parts list

Product version up to 3/2/2021

Product version from 3/2/2021

| No. | Item Number | Name | Quantity used | Delivery time |
|-----|--------------------|-------|---------------|---------------|
| | 04 12 11 073 01-08 | spout | 21 | 40 |