





## MADISON Metal hand shower with porcelain insert (white) - Brushed Chrome

28 002 970



- COMPACT RAIN, max. flow rate 9 l/min (at 3 bar)
- Function from: 6 l/min
- spray head Ø 64mm
- 1/2" connection
- WRAS

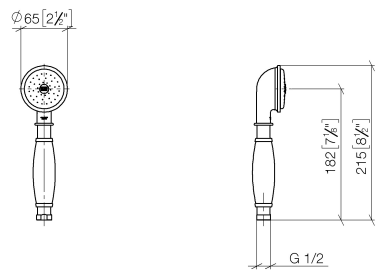
Intrinsic protection against back flow.

|   |                               |                    |
|---|-------------------------------|--------------------|
|    | Brushed Chrome                | 28 002 970-93      |
|    | Chrome                        | 28 002 970-00      |
|    | Chrome                        | 28 002 970-00 0010 |
|    | Gold (23.9kt)                 | 28 002 970-01      |
|    | Brushed Platinum              | 28 002 970-06      |
|    | Brushed Platinum              | 28 002 970-06 0010 |
|    | Platinum                      | 28 002 970-08      |
|    | Platinum                      | 28 002 970-08 0010 |
|    | Durabrass (23kt Gold)         | 28 002 970-09      |
|   | Durabrass (23kt Gold)         | 28 002 970-09 0010 |
|  | Brushed Durabrass (23kt Gold) | 28 002 970-28      |
|  | Brushed Durabrass (23kt Gold) | 28 002 970-28 0010 |
|  | Brushed Chrome                | 28 002 970-93 0010 |
|  | Brushed Dark Platinum         | 28 002 970-99      |
|  | Brushed Dark Platinum         | 28 002 970-99 0010 |

MADISON Metal hand shower with porcelain insert (white) - Brushed Chrome

28 002 970

mm [inches]



Flow rate chart



Codes & Standards

|          |          |                           |                                |
|----------|----------|---------------------------|--------------------------------|
| DIN 4109 | ISO 3822 | Scottish Water<br>Byelaws | UK Water Supply<br>Regulations |
|----------|----------|---------------------------|--------------------------------|

Ü-Zeichen



MADISON Metal hand shower with porcelain insert (white) - Brushed Chrome

---

28 002 970

Certificates

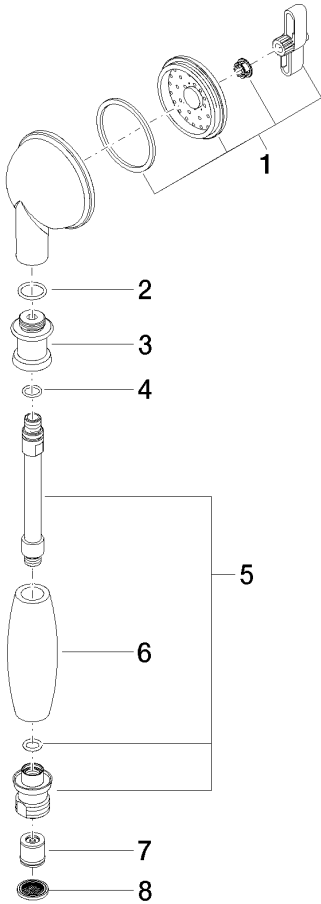
---

LGA\_8                      WRAS\_240502

MADISON Metal hand shower with porcelain insert (white) - Brushed Chrome

28 002 970

Parts for other  
finishes can be found  
here: [Chrome](#)



Spare parts list

| No. | Item Number        | Name         | Quantity used | Delivery time |
|-----|--------------------|--------------|---------------|---------------|
| 1   | 90 12 01 010 00 90 | set          | 1             | 2             |
| 2   | 09 14 10 069 90    | seal         | 1             | 2             |
| 3   | 09 24 04 059 20-93 | nipple       | 1             | 20            |
| 4   | 09 14 10 042 90    | seal         | 1             | 2             |
| 5   | 90 28 22 033 00-93 | insert       | 1             | 20            |
| 6   | 11 167 820 60      | handle       | 1             | 2             |
| 7   | 09 23 01 077 90    | flow reducer | 1             | 2             |
| 8   | 09 23 01 039 90    | sieve        | 1             | 2             |