

Shower head - Brushed Platinum

SERIES SPECIFIC

28 505 979 Product version from 3/9/2015



- spray head Ø 100mm
- Three or five settings: COMPACT RAIN, COMPACT SOFT FLOW, COMPACT AQUAPRESSURE FLOW, max. flow rate 7.6 l/min (at 3 bar)
- Function from: 5.5 l/min
- with anti-scale system

Technical dimensions:

- 155mm projection
- ball-joint pivotable through 18° (in any direction)
- rosette Ø 60 mm
- 1/2" connection
- WRAS

| | | |
|---|-------------------------------|---------------|
|  | Brushed Platinum | 28 505 979-06 |
|  | Chrome | 28 505 979-00 |
|  | Platinum | 28 505 979-08 |
|  | Dark Chrome | 28 505 979-19 |
|  | Light Gold | 28 505 979-26 |
|  | Brushed Light Gold | 28 505 979-27 |
|  | Brushed Durabrass (23kt Gold) | 28 505 979-28 |
|  | Matte Black | 28 505 979-33 |
|  | Brushed Bronze | 28 505 979-42 |
|  | Brushed Champagne (22kt Gold) | 28 505 979-46 |
|  | Champagne (22kt Gold) | 28 505 979-47 |
|  | Brushed Chrome | 28 505 979-93 |
|  | Brushed Dark Platinum | 28 505 979-99 |

Recommended miscellaneous

- Concealed wall elbow -** 35 085 970 90
- max. recess depth 163 mm
 - min. recess depth 90 mm



28 505 979 Product version from 3/9/2015

mm [inches]



Flow rate chart



Codes & Standards

DIN 4109

ISO 3822

Scottish Water
Byelaws

UK Water Supply
Regulations

Ü-Zeichen



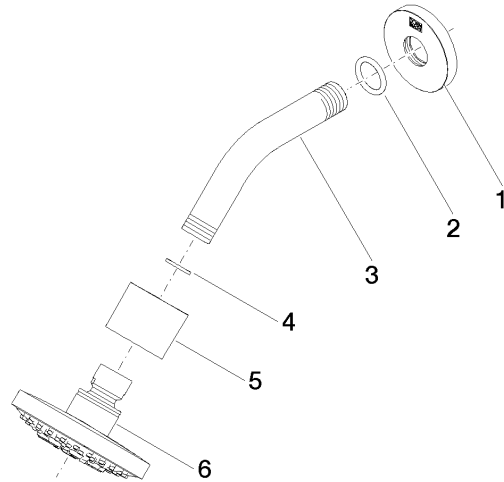
Shower head - Brushed Platinum

SERIES SPECIFIC

28 505 979 Product version from 3/9/2015

Certificates and sustainability

LGA_28 WRAS_2201



Spare parts list

| No. | Item Number | Name | Quantity used | Delivery time |
|-----|--------------------|------------|---------------|---------------|
| 1 | 09 27 22 045-06 | rosette | 1.00 | 10 |
| 6 | 90 12 05 055 00-06 | shower | 1.00 | 10 |
| 3 | 09 11 03 011-06 | connection | 1.00 | 10 |
| 5 | 09 11 01 191-06 | cover | 1.00 | 10 |
| 2 | 90 14 10 026 00 90 | seal | 1.00 | 2 |
| 4 | 90 14 20 002 00 90 | seal | 1.00 | 2 |