

Rain shower with wall fixing FlowReduce 220 mm - Brushed Durabron (23kt Gold)

IMO

28 648 670



Fits: IMO, CYO

- 450mm projection
- rain shower Ø 220 mm
- rain flow
- max. flow 7 l/min
- Function from: 6 l/min
- rosette 65 x 65 mm
- 1/2" connection
- with anti-scale system
- quick clearing
- This product can help a building meet the requirements of Green Building Rating Systems, e.g. LEED®, BREEAM®, DGNB

	Brushed Durabron (23kt Gold)	28 648 670-28
	Chrome	28 648 670-00
	Brushed Platinum	28 648 670-06
	Platinum	28 648 670-08
	Dark Chrome	28 648 670-19
	Brushed Light Gold	28 648 670-27
	Matte Black	28 648 670-33
	Brushed Champagne (22kt Gold)	28 648 670-46
	Champagne (22kt Gold)	28 648 670-47
	Brushed Chrome	28 648 670-93
	Brushed Dark Platinum	28 648 670-99

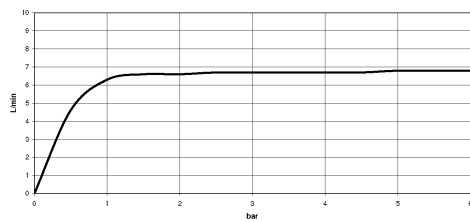
Rain shower with wall fixing FlowReduce 220 mm - Brushed Durabron (23kt Gold)

IMO

28 648 670
mm [inches]



Flow rate chart



Codes & Standards

DIN 4109

ISO 3822

Ü-Zeichen



Rain shower with wall fixing FlowReduce 220 mm - Brushed Durabrass (23kt Gold)

IMO

28 648 670

Certificates

LGA_38

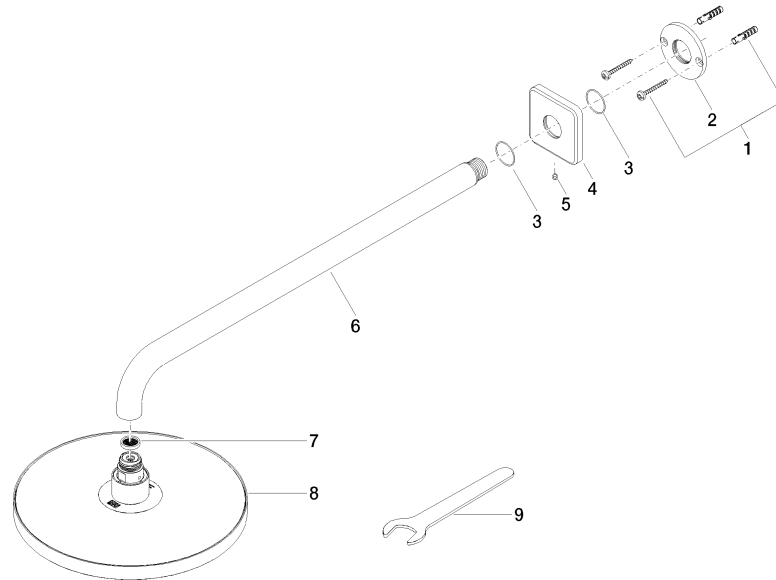
Rain shower with wall fixing FlowReduce 220 mm - Brushed Durabronz (23kt Gold)

IMO

28 648 670

Product version from 4/1/2024

Parts for other
finishes can be found
here: [Chrome](#)





Rain shower with wall fixing FlowReduce 220 mm - Brushed Durabrass (23kt Gold)

IMO

28 648 670

Spare parts list

Product version from 4/1/2024

No.	Item Number	Name	Quantity used	Delivery time
	04 30 31 032 00 90	fixing set	9	2