

META Single-lever basin mixer with pop-up waste - Brushed Chrome

META

33 502 660



- 135mm projection
- fixed spout
- circular, air-enriched flow
- height of mixer 158 mm
- height up to aerator 77 mm
- hole diameter 35 mm
- 2x screw-in M 8 x 1 pressure hose, leak-tested
- max. flow 5.7 l/min
- lead-free
- This product can help a building meet the requirements of Green Building Rating Systems, e.g. LEED®, BREEAM®, DGNB
- WRAS 2003058

Only suitable for basins with an overflow.

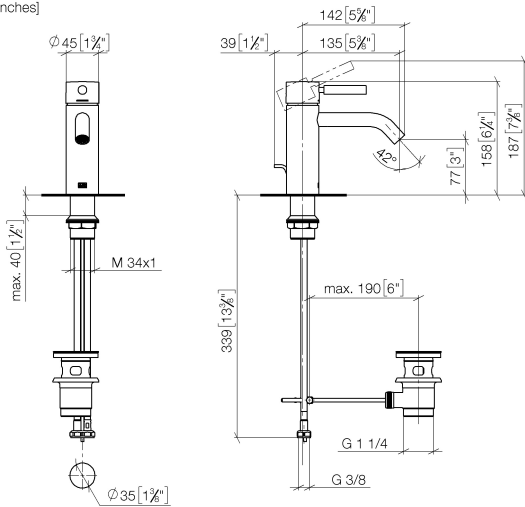
| | | |
|--|-------------------------------|---------------|
|  | Brushed Chrome | 33 502 660-93 |
|  | Chrome | 33 502 660-00 |
|  | Brushed Platinum | 33 502 660-06 |
|  | Dark Chrome | 33 502 660-19 |
|  | Light Gold | 33 502 660-26 |
|  | Brushed Light Gold | 33 502 660-27 |
|  | Matte Black | 33 502 660-33 |
|  | Brushed Bronze | 33 502 660-42 |
|  | Brushed Champagne (22kt Gold) | 33 502 660-46 |
|  | Champagne (22kt Gold) | 33 502 660-47 |
|  | Brushed Dark Platinum | 33 502 660-99 |

META Single-lever basin mixer with pop-up waste - Brushed Chrome

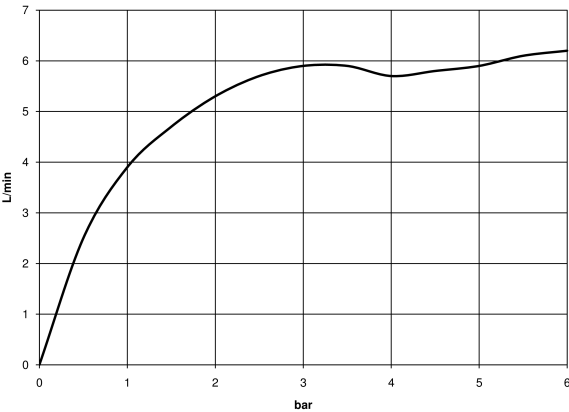
META

33 502 660

mm [inches]



Flow rate chart



Codes & Standards

DIN 4109

EN 817

ISO 3822

Scottish Water
Byelaws

UK Water Supply
Regulations

Ü-Zeichen



META Single-lever basin mixer with pop-up waste - Brushed Chrome

META

33 502 660

Certificates

WRAS_2003

LGA_29

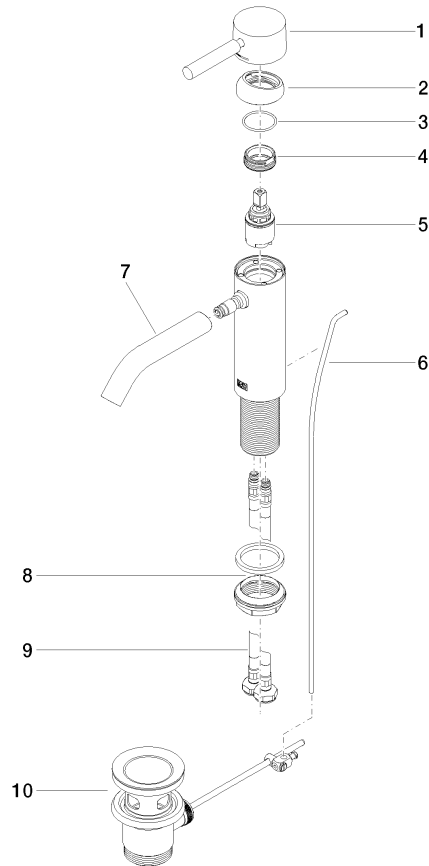
DVGW_DW-
6506DN0

33 502 660

Product version up to 1/23/2020

Product version from 1/23/2020

Parts for other
finishes can be found
here: [Chrome](#)





META Single-lever basin mixer with pop-up waste - Brushed Chrome

META

33 502 660

Spare parts list

Product version up to 1/23/2020

Product version from 1/23/2020

| No. | Item Number | Name | Quantity used | Delivery time |
|-----|--------------------|--------|---------------|---------------|
| | 90 20 66 002 00-93 | handle | 11 | 20 |