





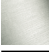

IMO Single-lever basin mixer with pop-up waste - Brushed Durabrand (23kt Gold)

IMO

33 507 670



- 105mm projection
 - fixed spout
 - rectangular, air-enriched flow
 - height of mixer 149 mm
 - height up to aerator 80 mm
 - hole diameter 35 mm
 - rosette Ø 52 mm optional
 - progressive cartridge
 - 2x screw-in M 10 x 1 pressure hose, leak-tested
 - max. flow 7 l/min
 - lead-free
 - This product can help a building meet the requirements of Green Building Rating Systems, e.g. LEED®, BREEAM®, DGNB
- Only suitable for basins with an overflow.

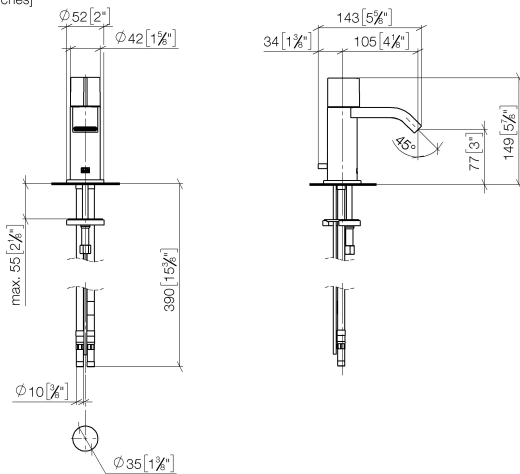
| | | |
|--|-------------------------------|---------------|
|  | Brushed Durabrand (23kt Gold) | 33 507 670-28 |
|  | Chrome | 33 507 670-00 |
|  | Brushed Platinum | 33 507 670-06 |
|  | Platinum | 33 507 670-08 |
|  | Brushed Chrome | 33 507 670-93 |
|  | Brushed Dark Platinum | 33 507 670-99 |

IMO Single-lever basin mixer with pop-up waste - Brushed Durabron (23kt Gold)

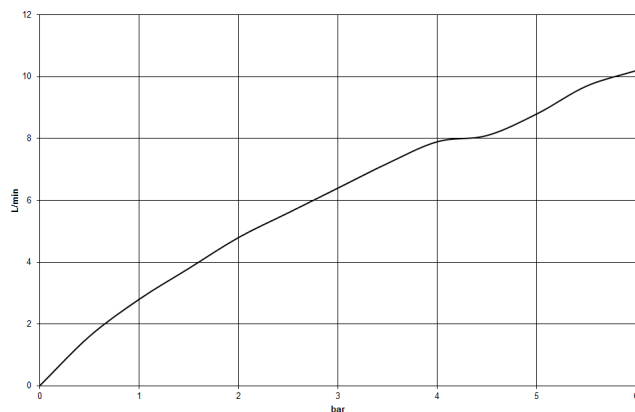
IMO

33 507 670

mm [inches]



Flow rate chart



Codes & Standards

DIN 4109

EN 817

Executive Order
no. 1007

ISO 3822

Ü-Zeichen

VA-Zeichen



IMO Single-lever basin mixer with pop-up waste - Brushed Durabrass (23kt Gold)

IMO

33 507 670
Certificates

| | | |
|----------|--------|--------|
| GDV_0400 | LGA_19 | ETA_19 |
|----------|--------|--------|

IMO Single-lever basin mixer with pop-up waste - Brushed Durabrass (23kt Gold)

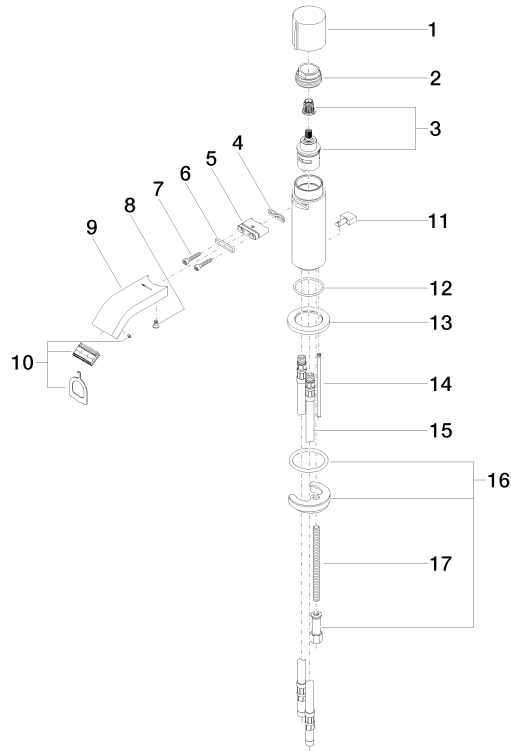
IMO

33 507 670

Product version up to 5/10/2021

Product version from 5/10/2021

Parts for other
finishes can be found
here: [Chrome](#)



18 ———— Revised for 04.11.01.001.00-0



IMO Single-lever basin mixer with pop-up waste - Brushed Durabrass (23kt Gold)

IMO

33 507 670

Spare parts list

Product version up to 5/10/2021

Product version from 5/10/2021

| No. | Item Number | Name | Quantity used | Delivery time |
|-----|-----------------|--------|---------------|---------------|
| | 09 20 67 001-28 | handle | 20 | 20 |