

## VAIA Single-lever basin mixer with raised base without pop-up waste - Brushed Dark Brass

VAIA

33 534 809 Product version from 3/13/2017



- 201mm projection
- pivotable spout 360°
- circular, air-enriched flow
- height of mixer 414 mm
- height up to aerator 316 mm
- hole diameter 35 mm
- max. flow 5.7 l/min
- 2x screw-in M 8 x 1 pressure hose, leak-tested
- This product can help a building meet the requirements of Green Building Rating Systems, e.g. LEED®, BREEAM®, DGNB
- lead-free
- WRAS

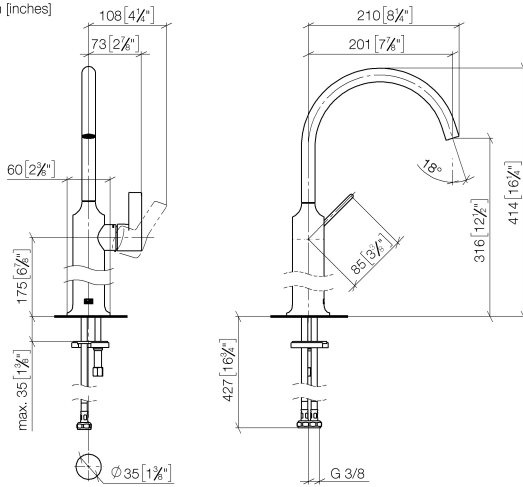
for use on countertop bowls

|  |                                |               |
|--|--------------------------------|---------------|
|   | Brushed Dark Brass             | 33 534 809-39 |
|   | Chrome                         | 33 534 809-00 |
|   | Brushed Platinum               | 33 534 809-06 |
|   | Platinum                       | 33 534 809-08 |
|   | Dark Chrome                    | 33 534 809-19 |
|   | Brushed Durabronze (23kt Gold) | 33 534 809-28 |
|   | Brushed Bronze                 | 33 534 809-42 |
|   | Brushed Champagne (22kt Gold)  | 33 534 809-46 |
|   | Champagne (22kt Gold)          | 33 534 809-47 |
|  | Brushed Dark Platinum          | 33 534 809-99 |

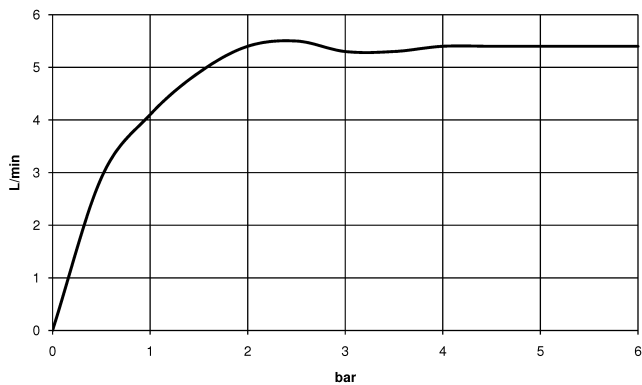
# VAIA Single-lever basin mixer with raised base without pop-up waste - Brushed Dark Brass

VAIA

33 534 809 Product version from 3/13/2017  
mm [inches]



Flow rate chart



## Codes & Standards

DIN 4109

Executive Order  
no. 1007

ISO 3822

Scottish Water  
Byelaws

UK Water Supply  
Regulations

Ü-Zeichen



## VAIA Single-lever basin mixer with raised base without pop-up waste - Brushed Dark Brass

---

VAIA

33 534 809 Product version from 3/13/2017

Certificates and sustainability

---

LGA\_29

GDV\_0400

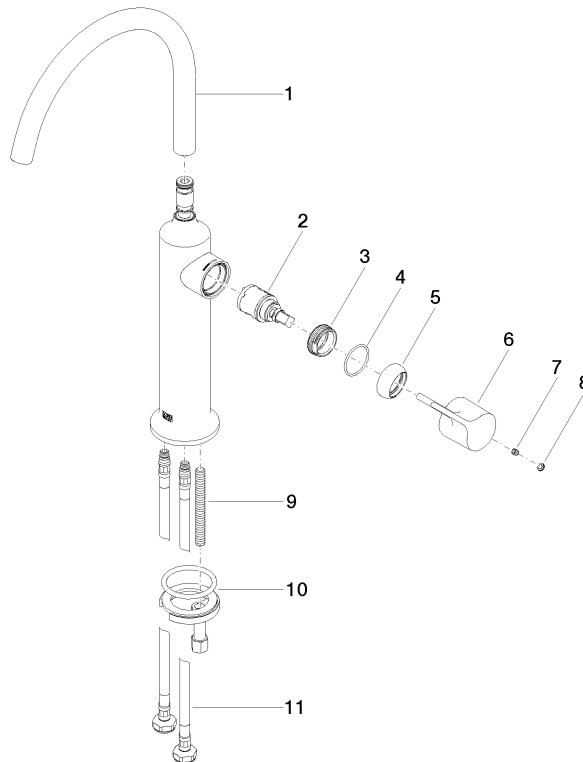
WRAS\_240702

## VAIA Single-lever basin mixer with raised base without pop-up waste - Brushed Dark Brass

VAIA

33 534 809 Product version from 3/13/2017

Parts for other  
finishes can be found  
here: [Chrome](#)



### Spare parts list

| No. | Item Number        | Name       | Quantity used | Delivery time |
|-----|--------------------|------------|---------------|---------------|
| 4   | 09 14 10 091 90    | seal       | 1.00          | 2             |
| 1   | 90 28 22 313 00-39 | spout      | 1.00          | 30            |
| 11  | 04 30 04 100 00 90 | hose       | 2.00          | 2             |
| 9   | 09 31 11 011 90    | pin        | 1.00          | 2             |
| 7   | 90 31 11 030 00 90 | pin        | 1.00          | 2             |
| 10  | 04 30 11 038 00 90 | fixing set | 1.00          | 2             |
| 8   | 90 31 20 087 00-39 | plug       | 1.00          | 30            |
| 2   | 90 15 05 042 00 90 | cartridge  | 1.00          | 2             |
| 6   | 09 20 80 020-39    | handle     | 1.00          | 60            |
| 5   | 09 28 30 021-39    | cover      | 1.00          | 60            |
| 3   | 09 24 04 266 90    | nut        | 1.00          | 2             |