

# MEM BAR TAP Single-lever mixer - Chrome

33 805 682 Product version from 3/1/2023



- 166mm projection
- pivotable spout 360°
- Optional swivel limiter available with swivel limiter set 12 820 970 90
- air-enriched flow
- max. flow 6.3 l/min at 3 bar flow pressure
- lead-free
- This product can help a building meet the requirements of Green Building Rating Systems, e.g. LEED®, BREEAM®, DGNB
- WRAS

|   |                               |               |
|---|-------------------------------|---------------|
|    | Chrome                        | 33 805 682-00 |
|    | Brushed Platinum              | 33 805 682-06 |
|    | Platinum                      | 33 805 682-08 |
|    | Durabrass (23kt Gold)         | 33 805 682-09 |
|    | Dark Chrome                   | 33 805 682-19 |
|    | Brushed Durabrass (23kt Gold) | 33 805 682-28 |
|    | Matte Black                   | 33 805 682-33 |
|    | Brushed Champagne (22kt Gold) | 33 805 682-46 |
|    | Champagne (22kt Gold)         | 33 805 682-47 |
|   | Brushed Chrome                | 33 805 682-93 |
|  | Brushed Dark Platinum         | 33 805 682-99 |

## Recommended miscellaneous

**Swivel limitation set -** 12 820 970 90



## Recommended miscellaneous

**Dispenser without rosette - Chrome** 82 424 970-00



## Recommended miscellaneous

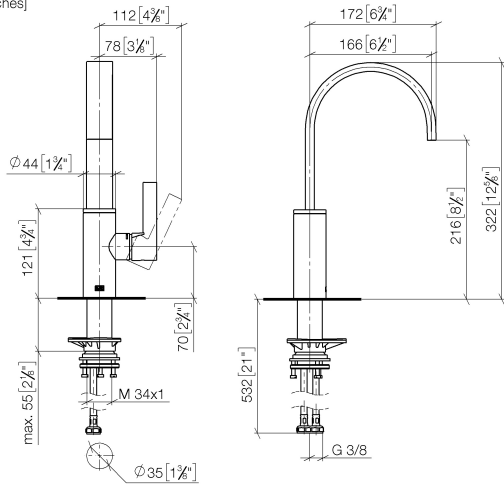
**Strainer waste with control handle - Chrome** 10 712 970-00



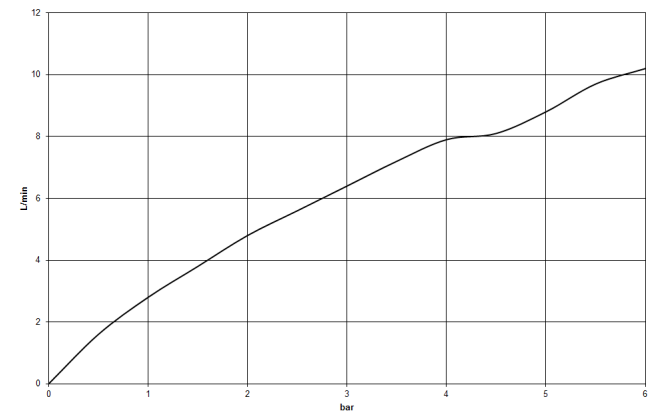
**MEM BAR TAP Single-lever mixer - Chrome**

33 805 682 Product version from 3/1/2023

mm [inches]



**Flow rate chart**



**Codes & Standards**

DIN 4109

ISO 3822

Scottish Water  
Byelaws

UK Water Supply  
Regulations

Ü-Zeichen



## MEM BAR TAP Single-lever mixer - Chrome

---

33 805 682 Product version from 3/1/2023

### Certificates

---

LGA\_38

WRAS\_240202

## MEM BAR TAP Single-lever mixer - Chrome

33 805 682 Product version from 3/1/2023



### Spare parts list

| No.  | Item Number        | Name       | Quantity used | Delivery time |
|--|--------------------|------------|---------------|---------------|
| 1  | 90 28 22 282 00-00 | spout      | 1             | -             |
| Spare part can no longer be ordered, please order the replacement item |                    |            |               |               |
| 2  | 09 19 86 012-00    | cover      | 1             | 60            |
| 3  | 90 23 10 128 00 90 | nut        | 1             | 2             |
| 4  | 90 15 05 042 00 90 | cartridge  | 1             | 2             |
| 5  | 09 24 04 266 90    | nut        | 1             | 2             |
| 6  | 90 28 30 052 00-00 | cover      | 1             | 10            |
| 7  | 90 20 86 004 00-00 | handle     | 1             | 10            |
| 8  | 04 23 10 044 08 90 | fixing set | 1             | 2             |
| 9  | 04 30 04 101 00 90 | hose       | 2             | 2             |