

TARA ULTRA BAR TAP Single-lever mixer - Platinum

TARA ULTRA

33 805 875 Product version up to 5/15/2020



- 166mm projection
- gauge mm
- pivotable spout 360°
- laminar flow
- height of mixer 303 mm
- height up to laminar flow regulator 186 mm
- hole diameter 35 mm
- max. flow 8 l/min at 3 bar flow pressure
- lead-free
- This product can help a building meet the requirements of Green Building Rating Systems, e.g. LEED®, BREEAM®, DGNB

| | | |
|---|--------------------------------|---------------|
|  | Platinum | 33 805 875-08 |
|  | Chrome | 33 805 875-00 |
|  | Brushed Platinum | 33 805 875-06 |
|  | Durabronze (23kt Gold) | 33 805 875-09 |
|  | Dark Chrome | 33 805 875-19 |
|  | Brushed Durabronze (23kt Gold) | 33 805 875-28 |
|  | Matte Black | 33 805 875-33 |
|  | Brushed Bronze | 33 805 875-42 |
|  | Brushed Champagne (22kt Gold) | 33 805 875-46 |
|  | Champagne (22kt Gold) | 33 805 875-47 |
|  | Brushed Chrome | 33 805 875-93 |
|  | Brushed Dark Platinum | 33 805 875-99 |

Recommended miscellaneous

Strainer waste with control handle - Platinum 10 712 970-08

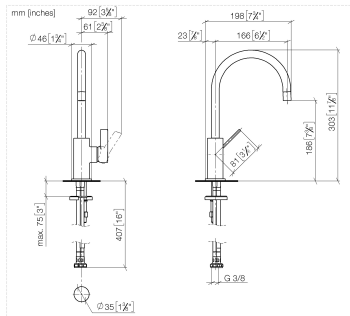


Recommended miscellaneous

Dispenser without rosette - Platinum 82 424 970-08



33 805 875 Product version up to 5/15/2020



Flow rate chart



Codes & Standards

DIN 4109

ISO 3822

Ü-Zeichen



TARA ULTRA BAR TAP Single-lever mixer - Platinum

TARA ULTRA

33 805 875 Product version up to 5/15/2020

Certificates and sustainability

LGA_18

33 805 875 Product version up to 5/15/2020

Parts for other
finishes can be found
here: [Chrome](#)



Spare parts list

| No. | Item Number | Name | Quantity used | Delivery time |
|-----|-----------------------|------------|---------------|---------------|
| | 13 04 30 04 016 00 90 | hose | 2.00 | 60 |
| | 3 09 31 11 008 90 | pin | 1.00 | 2 |
| | 1 90 28 22 206 00-08 | spout | 1.00 | 40 |
| | 15 12 803 970 90 | extension | 1.00 | 60 |
| | 4 90 15 05 041 00 90 | cartridge | 1.00 | 2 |
| | 11 09 27 85 001-08 | rosette | 1.00 | 60 |
| | 14 09 31 11 011 90 | pin | 1.00 | 2 |
| | 5 09 24 04 130-07 | nut | 1.00 | 30 |
| | 6 09 24 04 204-08 | cover | 1.00 | 40 |
| | 2 90 23 01 067 00-08 | aerator | 1.00 | 40 |
| | 12 04 30 11 038 64 90 | fixing set | 1.00 | 2 |
| | 10 09 14 10 118 90 | seal | 1.00 | 2 |
| | 9 09 20 88 051-08 | handle | 1.00 | 40 |
| | 7 90 31 20 109 00 90 | plug | 1.00 | 2 |
| | 8 90 31 11 030 00 90 | pin | 1.00 | 2 |