

TARA Single-lever mixer - Brushed Chrome

TARA

33 815 888 Product version from 9/7/2021



- 236mm projection
- pivotable spout 360°
- air-enriched flow
- height of mixer 400 mm
- height up to aerator 230 mm
- hole diameter 35 mm
- max. flow 7 l/min at 3 bar flow pressure
- lead-free
- WRAS
- This product can help a building meet the requirements of Green Building Rating Systems, e.g. LEED®, BREEAM®, DGNB

| | | |
|---|-------------------------------|---------------|
|  | Brushed Chrome | 33 815 888-93 |
|  | Chrome | 33 815 888-00 |
|  | Brushed Platinum | 33 815 888-06 |
|  | Platinum | 33 815 888-08 |
|  | Durabrand (23kt Gold) | 33 815 888-09 |
|  | Dark Chrome | 33 815 888-19 |
|  | Brushed Durabrand (23kt Gold) | 33 815 888-28 |
|  | Matte Black | 33 815 888-33 |
|  | Brushed Bronze | 33 815 888-42 |
|  | Brushed Champagne (22kt Gold) | 33 815 888-46 |
|  | Champagne (22kt Gold) | 33 815 888-47 |
|  | Brushed Dark Platinum | 33 815 888-99 |

Recommended miscellaneous

Dispenser with rosette - Brushed Chrome 82 444 970-93

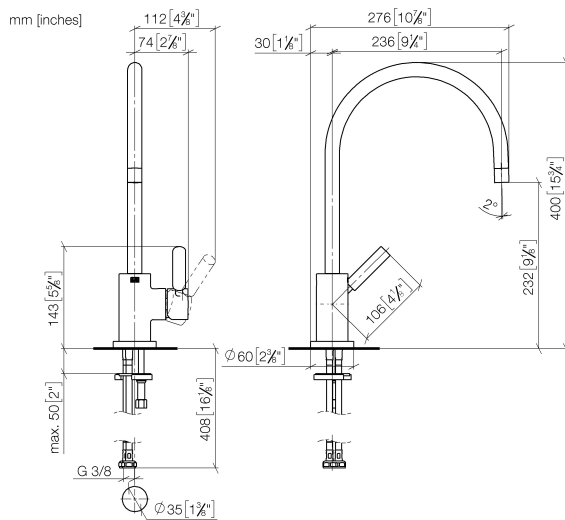


Recommended miscellaneous

Strainer waste with control handle - Brushed Chrome 10 710 970-93



33 815 888 Product version from 9/7/2021



Flow rate chart



Codes & Standards

| | | | |
|---------------------------|--------------------------------|-----------------------------|------------|
| DIN 4109 | EN 817 | Executive Order no. 1007 | ISO 3822 |
| Scottish Water Byelaws | UK Water Supply Regulations | Ü-Zeichen | VA-Zeichen |



TARA Single-lever mixer - Brushed Chrome

TARA

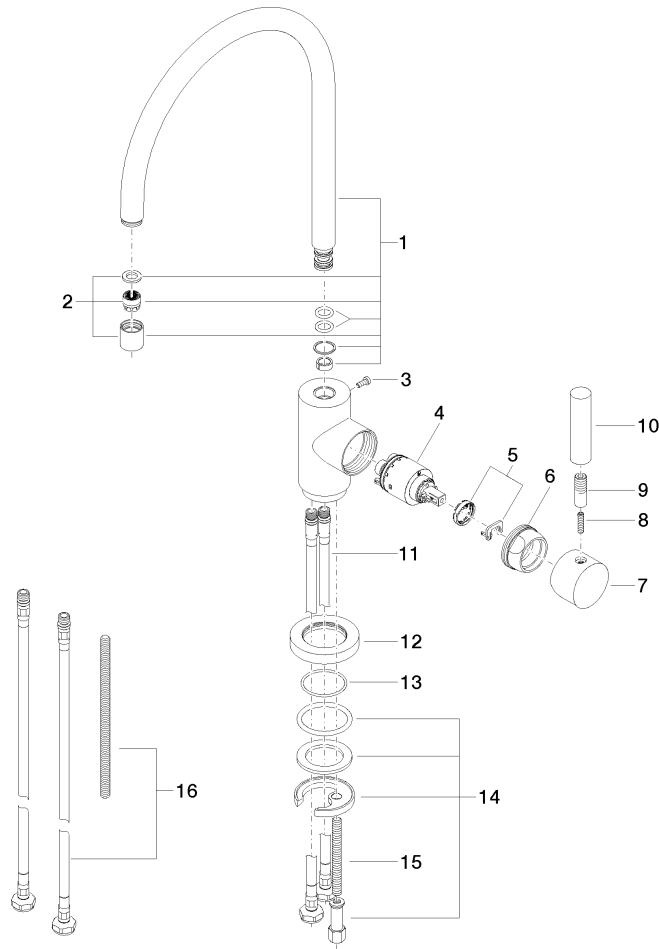
33 815 888 Product version from 9/7/2021

Certificates and sustainability

| | | | |
|----------|--------|-------|-----------|
| GDV_0400 | ETA_18 | LGA_8 | WRAS_2311 |
|----------|--------|-------|-----------|

33 815 888 Product version from 9/7/2021

Parts for other
finishes can be found
here: [Chrome](#)



Spare parts list

| No. | Item Number | Name | Quantity used | Delivery time |
|-----|--------------------|-------------|---------------|---------------|
| 1 | 90 28 22 049 02-93 | spout | 1.00 | 20 |
| 11 | 04 30 04 104 00 90 | hose | 2.00 | 2 |
| 14 | 04 30 11 038 00 90 | fixing set | 1.00 | 2 |
| 12 | 09 28 10 055-93 | rosette | 1.00 | 60 |
| 7 | 90 20 88 040 00-93 | handle | 1.00 | 20 |
| 13 | 09 14 10 034 90 | seal | 1.00 | 2 |
| 6 | 09 24 04 107-93 | nut | 1.00 | 20 |
| 8 | 09 31 11 010 90 | pin | 1.00 | 2 |
| 2 | 90 23 01 028 03-93 | aerator | 1.00 | 20 |
| 3 | 09 30 30 054 90 | screw | 1.00 | 2 |
| 15 | 09 31 11 011 90 | pin | 1.00 | 2 |
| 16 | 12 803 970 90 | extension | 1.00 | 60 |
| 10 | 11 170 880-93 | handle | 1.00 | 60 |
| 4 | 90 15 05 065 00 90 | cartridge | 1.00 | 2 |
| 5 | 90 28 10 148 00 90 | accessories | 1.00 | 2 |
| 9 | 90 24 04 048 00-93 | nipple | 1.00 | 20 |