

# ELIO Single-lever mixer Pull-out - Brushed Chrome

ELIO

33 840 790



- 235mm projection
- pivotable spout 360°
- air-enriched flow
- height of mixer 337 mm
- height up to aerator 300 mm
- hole diameter 35 mm
- fabric braided hose 1500 mm
- max. flow 8.8 l/min at 3 bar flow pressure
- lead-free
- This product can help a building meet the requirements of Green Building Rating Systems, e.g. LEED®, BREEAM®, DGNB

Intrinsic protection against back flow.

	Brushed Chrome	33 840 790-93
	Chrome	33 840 790-00
	Brushed Platinum	33 840 790-06
	Platinum	33 840 790-08
	Dark Chrome	33 840 790-19
	Brushed Durabronze (23kt Gold)	33 840 790-28
	Brushed Champagne (22kt Gold)	33 840 790-46
	Champagne (22kt Gold)	33 840 790-47
	Brushed Dark Platinum	33 840 790-99

## Recommended miscellaneous



**Dispenser without rosette -  
Brushed Chrome** 82 424 970-93

## Recommended miscellaneous



**Strainer waste with control handle  
- Brushed Chrome** 10 712 970-93





## ELIO Single-lever mixer Pull-out - Brushed Chrome

---

ELIO

33 840 790

### Certificates

---

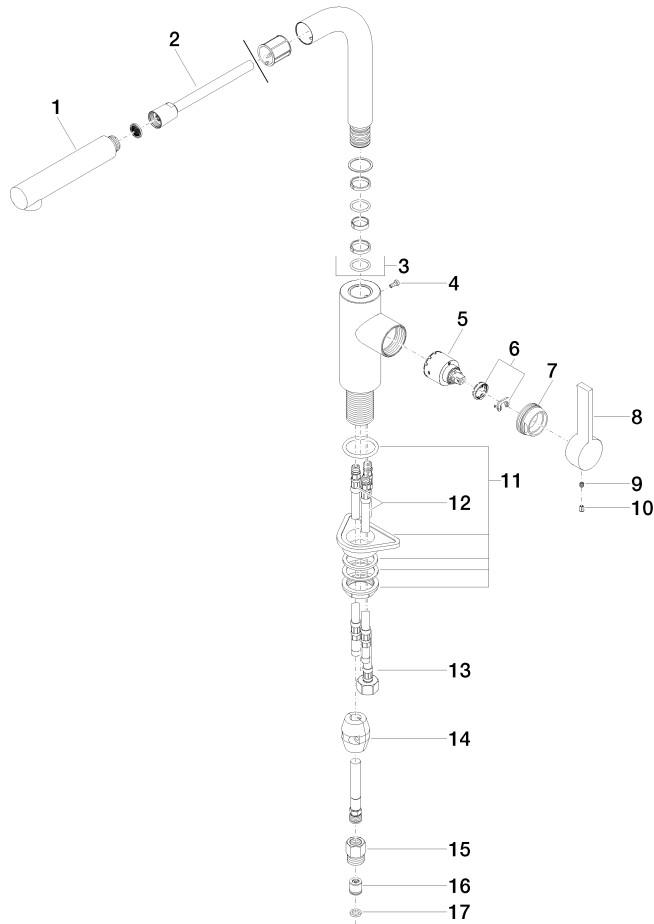
Belgaqua\_22\_277\_2 LGA\_19

GDV\_0400

33 840 790

**Product version from 6/1/2022**

Parts for other  
finishes can be found  
here: [Chrome](#)





## ELIO Single-lever mixer Pull-out - Brushed Chrome

ELIO

33 840 790

### **Spare parts list**

**Product version from 6/1/2022**