

ENO Single-lever mixer Pull-out - Brushed Platinum

ENO


33 845 760



- 220mm projection
  - pivotable spout 130°
  - air-enriched flow
  - height of mixer 288 mm
  - height up to aerator 187 mm
  - hole diameter 35 mm
  - 1600mm metal shower hose
  - max. flow 10 l/min at 3 bar flow pressure
  - lead-free
  - This product can help a building meet the requirements of Green Building Rating Systems, e.g. LEED®, BREEAM®, DGNB
- Intrinsic protection against back flow.

|   |                               |               |
|---|-------------------------------|---------------|
|  | Brushed Platinum              | 33 845 760-06 |
|  | Chrome                        | 33 845 760-00 |
|  | Platinum                      | 33 845 760-08 |
|  | Dark Chrome                   | 33 845 760-19 |
|  | Brushed Durabrass (23kt Gold) | 33 845 760-28 |
|  | Brushed Champagne (22kt Gold) | 33 845 760-46 |
|  | Champagne (22kt Gold)         | 33 845 760-47 |
|  | Brushed Chrome                | 33 845 760-93 |
|  | Brushed Dark Platinum         | 33 845 760-99 |

Recommended miscellaneous



Strainer waste with control handle

- Brushed Platinum

10 712 970-06

Recommended miscellaneous



Dispenser without rosette -

Brushed Platinum

82 424 970-06

33 845 760



**Flow rate chart**



## Certificates

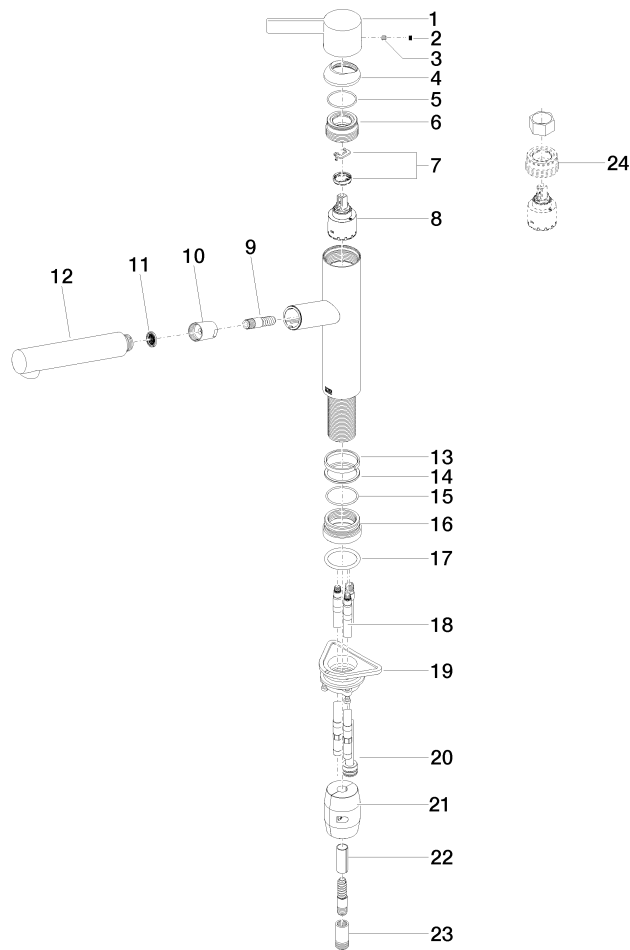
LGA\_28655.      Belgaqua\_21-027-      GDV\_0400282.  
27\_3.

## ENO Single-lever mixer Pull-out - Brushed Platinum

ENO

33 845 760

Parts for other  
finishes can be found  
here: [Chrome](#)



33 845 760

## Spare parts list

| No. | Item Number        | Name        | Quantity used | Delivery time |
|-----|--------------------|-------------|---------------|---------------|
| 1   | 09 20 76 001-06    | handle      | 1             | 10            |
| 2   | 90 31 20 109 00 90 | plug        | 1             | 2             |
| 3   | 90 31 11 030 00 90 | pin         | 1             | 2             |
| 4   | 09 28 30 012-06    | cover       | 1             | 10            |
| 5   | 09 14 10 102 90    | seal        | 1             | 2             |
| 6   | 09 24 04 270 90    | nut         | 1             | 2             |
| 7   | 90 28 10 148 00 90 | accessories | 1             | 2             |
| 8   | 90 15 05 064 00 90 | cartridge   | 1             | 2             |
| 9   | 04 30 02 121 00-85 | hose        | 1             | 30            |
| 10  | 90 24 03 255 00-06 | nut         | 1             | 10            |
| 11  | 09 23 01 039 90    | sieve       | 1             | 2             |
| 12  | 04 12 11 106 00-06 | shower      | 1             | 10            |
| 13  | 09 14 15 029 90    | ring        | 1             | 2             |
| 14  | 09 28 10 144 90    | ring        | 1             | 2             |
| 15  | 09 14 10 034 90    | seal        | 1             | 2             |
| 16  | 09 27 76 001-06    | rosette     | 1             | 10            |
| 17  | 09 14 10 036 90    | seal        | 1             | 2             |
| 18  | 04 30 04 098 00 90 | hose        | 2             | 60            |
| 19  | 04 30 11 040 00 90 | fixing set  | 1             | 2             |
| 20  | 04 28 20 067 00 90 | pipe        | 1             | 2             |
| 21  | 04 21 50 010 00 90 | accessories | 1             | 2             |
| 22  | 09 30 03 038 90    | hose        | 1             | 2             |
| 23  | 90 24 03 253 00 90 | adaptor     | 1             | 2             |
| 24  | 90 30 09 031 00 90 | key         | 1             | 2             |