

ELIO Single-lever mixer Pull-out with spray function - Chrome

ELIO

33 870 790



- 235mm projection
- pivotable spout 360°
- air-enriched flow and spray flow
- height of mixer 342 mm
- height up to aerator 292 mm
- hole diameter 35 mm
- fabric braided hose 1500 mm
- max. flow 8 l/min at 3 bar flow pressure
- lead-free
- This product can help a building meet the requirements of Green Building Rating Systems, e.g. LEED®, BREEAM®, DGNB

Intrinsic protection against back flow.

| | | |
|--|--------------------------------|---------------|
|  | Chrome | 33 870 790-00 |
|  | Brushed Platinum | 33 870 790-06 |
|  | Platinum | 33 870 790-08 |
|  | Dark Chrome | 33 870 790-19 |
|  | Brushed Durabronze (23kt Gold) | 33 870 790-28 |
|  | Brushed Champagne (22kt Gold) | 33 870 790-46 |
|  | Champagne (22kt Gold) | 33 870 790-47 |
|  | Brushed Chrome | 33 870 790-93 |
|  | Brushed Dark Platinum | 33 870 790-99 |

Recommended miscellaneous

Strainer waste with control handle - Chrome 10 712 970-00



Recommended miscellaneous

Dispenser without rosette - Chrome 82 424 970-00



ELIO Single-lever mixer Pull-out with spray function - Chrome

ELIO

33 870 790



Flow rate chart



Codes & Standards

DIN 4109

EN 1717

Executive Order
no. 1007

ISO 3822

Ü-Zeichen



ELIO Single-lever mixer Pull-out with spray function - Chrome

ELIO

33 870 790

Certificates

GDV_0400

Belgaqua_21-379-2 LGA_18

33 870 790

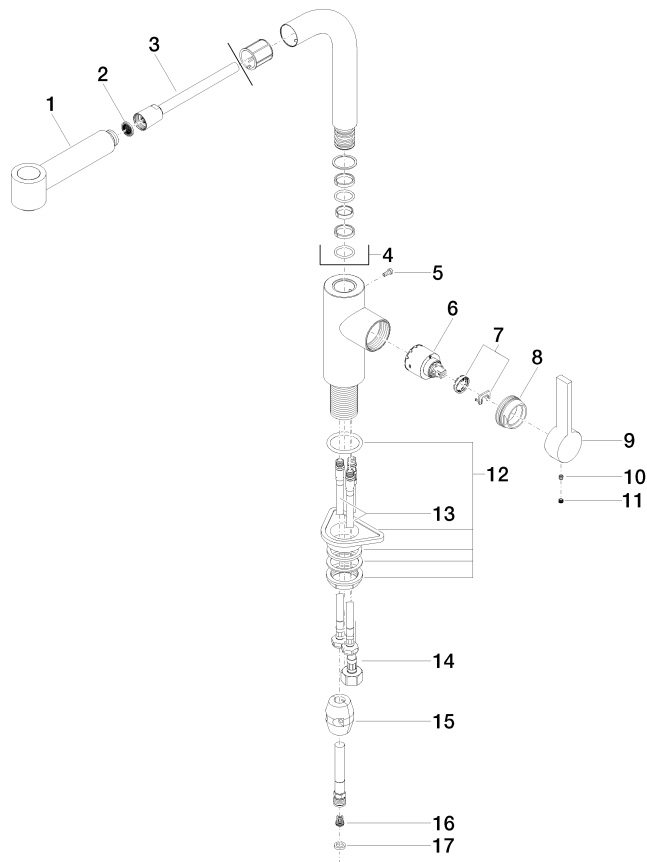
Product version up to 12/31/2013

Product version from 12/31/2013 to 5/15/2020

Product version from 5/15/2020 to 5/5/2021

Product version from 5/5/2021

Product version from 6/1/2022





ELIO Single-lever mixer Pull-out with spray function - Chrome

ELIO

33 870 790

Spare parts list

Product version up to 12/31/2013

Product version from 12/31/2013 to 5/15/2020

Product version from 5/15/2020 to 5/5/2021

Product version from 5/5/2021

Product version from 6/1/2022

| No. | Item Number | Name | Quantity used | Delivery time |
|-----|--------------------|--------|---------------|---------------|
| | 90 12 11 098 00-00 | shower | 18 | 10 |