

**ELIO Single-lever mixer Pull-out with spray function - Platinum**

ELIO

33 870 790



- 235mm projection
- pivotable spout 360°
- air-enriched flow and spray flow
- height of mixer 342 mm
- height up to aerator 292 mm
- hole diameter 35 mm
- fabric braided hose 1500 mm
- max. flow 8 l/min at 3 bar flow pressure
- lead-free
- This product can help a building meet the requirements of Green Building Rating Systems, e.g. LEED®, BREEAM®, DGNB

Intrinsic protection against back flow.

	Platinum	33 870 790-08
	Chrome	33 870 790-00
	Brushed Platinum	33 870 790-06
	Dark Chrome	33 870 790-19
	Brushed Durabronze (23kt Gold)	33 870 790-28
	Brushed Champagne (22kt Gold)	33 870 790-46
	Champagne (22kt Gold)	33 870 790-47
	Brushed Chrome	33 870 790-93
	Brushed Dark Platinum	33 870 790-99

**Recommended miscellaneous**

**Strainer waste with control handle - Platinum** 10 712 970-08



**Recommended miscellaneous**

**Dispenser without rosette - Platinum** 82 424 970-08



## ELIO Single-lever mixer Pull-out with spray function - Platinum

ELIO

33 870 790



### Flow rate chart



## Codes & Standards

DIN 4109

EN 1717

Executive Order  
no. 1007

ISO 3822

## Ü-Zeichen



## ELIO Single-lever mixer Pull-out with spray function - Platinum

---

ELIO

33 870 790

### Certificates

---

GDV\_0400

Belgaqua\_21-379-2 LGA\_18

33 870 790

Product version up to 12/31/2013

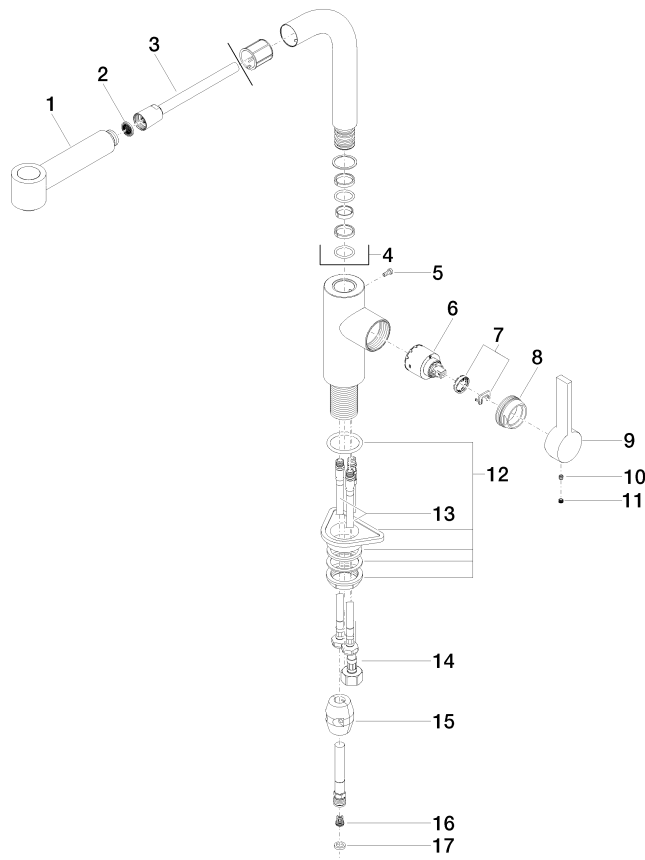
Product version from 12/31/2013 to 5/15/2020

Product version from 5/15/2020 to 5/5/2021

Product version from 5/5/2021

**Product version from 6/1/2022**

Parts for other  
finishes can be found  
here: [Chrome](#)





## ELIO Single-lever mixer Pull-out with spray function - Platinum

ELIO

33 870 790

### Spare parts list

Product version up to 12/31/2013

Product version from 12/31/2013 to 5/15/2020

Product version from 5/15/2020 to 5/5/2021

Product version from 5/5/2021

### Product version from 6/1/2022

No.	Item Number	Name	Quantity used	Delivery time
	90 12 11 098 00-08	shower	18	40