

SYNC Single-lever mixer Pull-down with spray function - Brushed Bronze

SYNC

33 875 895 Product version from 2/26/2015



- 240mm projection
- pivotable spout 360°
- Optional swivel limiter available with swivel limiter set 12 821 970 90
- laminar and spray flow
- height of mixer 420 mm
- height up to laminar flow regulator 240 mm
- hole diameter 35 mm
- 1800 mm metal shower hose
- sprayface with anti-scaling system
- max. flow 10.4 l/min at 3 bar flow pressure
- lead-free
- Flow modes can be changed while the water is running
- This product can help a building meet the requirements of Green Building Rating Systems, e.g. LEED®, BREEAM®, DGNB

Intrinsic protection against back flow.

	Brushed Bronze	33 875 895-42
	Chrome	33 875 895-00
	Brushed Platinum	33 875 895-06
	Platinum	33 875 895-08
	Durabronze (23kt Gold)	33 875 895-09
	Dark Chrome	33 875 895-19
	Brushed Durabronze (23kt Gold)	33 875 895-28
	Matte Black	33 875 895-33
	Brushed Champagne (22kt Gold)	33 875 895-46
	Champagne (22kt Gold)	33 875 895-47
	Brushed Chrome	33 875 895-93
	Brushed Dark Platinum	33 875 895-99

Recommended miscellaneous

Swivel limitation set -

12 821 970 90



Recommended miscellaneous

Strainer waste with control handle - Brushed Bronze

10 712 970-42



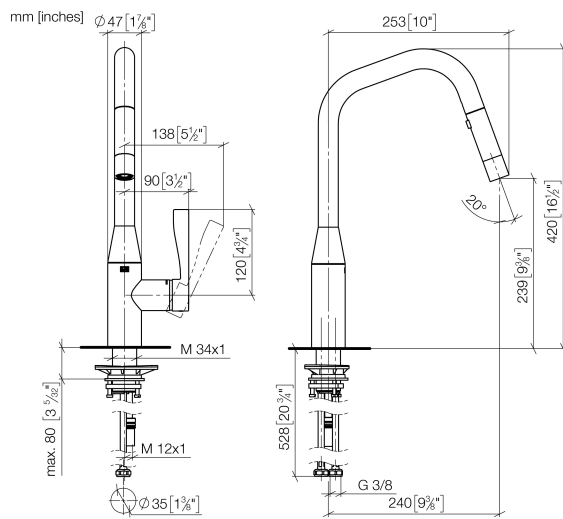
Recommended miscellaneous

Dispenser without rosette - Brushed Bronze

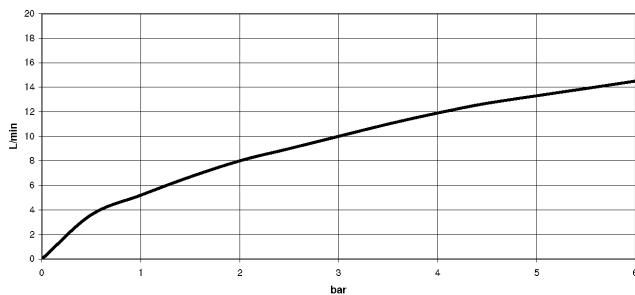
82 424 970-42



33 875 895 Product version from 2/26/2015



Flow rate chart



Codes & Standards

DIN 4109

Executive Order
no. 1007

ISO 3822

Ü-Zeichen



SYNC Single-lever mixer Pull-down with spray function - Brushed Bronze

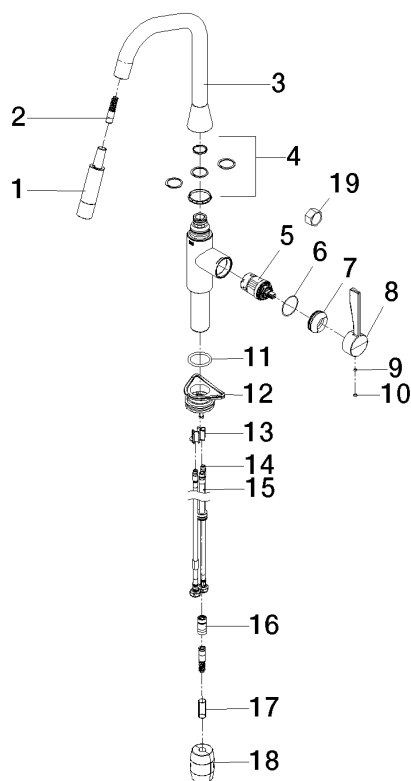
SYNC

33 875 895 Product version from 2/26/2015

Certificates and sustainability

LGA_28

GDV_0400



Spare parts list

No.	Item Number	Name	Quantity used	Delivery time
	16 90 24 03 253 00 90	adaptor	1.00	2
	10 90 31 20 087 00-42	plug	1.00	30
	17 09 30 03 038 90	hose	1.00	2
	7 09 28 30 030-42	cover	1.00	60
	9 90 31 11 063 00 90	pin	1.00	2
	6 09 14 10 190 90	seal	1.00	2
	3 90 28 22 301 00-42	spout	1.00	30
	18 04 21 50 010 00 90	accessories	1.00	2
	8 09 20 89 020-42	handle	1.00	60
	19 90 30 09 031 00 90	key	1.00	2
	12 04 30 11 040 00 90	fixing set	1.00	2
	11 09 14 10 036 90	seal	1.00	2
	1 90 12 11 184 00-42	shower	1.00	30
	2 04 30 02 120 00-42	hose	1.00	-
Spare part can no longer be ordered, please order the replacement item				
	15 04 28 20 067 00 90	pipe	1.00	2
	13 09 20 93 056 90	insert	1.00	2
	4 12 821 970 90	Swivel limitation set -	1.00	2
	14 04 30 04 101 00 90	hose	2.00	2
	5 90 15 05 046 05 90	cartridge	1.00	2