

Shower thermostat for wall mounting - Brushed Durabrand (23kt Gold)

SERIES SPECIFIC

34 442 979 Product version from 10/1/2023



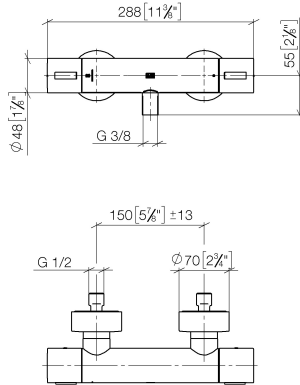
- 3/8" shower outlet
- slide-on rosettes Ø 70 mm
- 1/2" connection
- gauge 150 mm - 13 mm
- with volume control
- WRAS

Intrinsic protection against back flow.

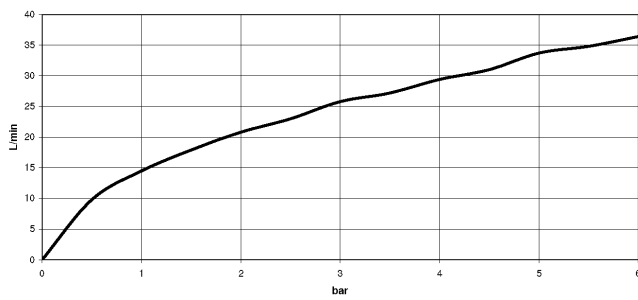
| | | |
|---|-------------------------------|---------------|
|  | Brushed Durabrand (23kt Gold) | 34 442 979-28 |
|  | Chrome | 34 442 979-00 |
|  | Brushed Platinum | 34 442 979-06 |
|  | Platinum | 34 442 979-08 |
|  | Dark Chrome | 34 442 979-19 |
|  | Light Gold | 34 442 979-26 |
|  | Brushed Light Gold | 34 442 979-27 |
|  | Matte Black | 34 442 979-33 |
|  | Brushed Dark Brass | 34 442 979-39 |
|  | Brushed Bronze | 34 442 979-42 |
|  | Brushed Champagne (22kt Gold) | 34 442 979-46 |
|  | Champagne (22kt Gold) | 34 442 979-47 |
|  | Brushed Chrome | 34 442 979-93 |
|  | Brushed Dark Platinum | 34 442 979-99 |

34 442 979 Product version from 10/1/2023

mm [inches]



Flow rate chart



Codes & Standards

DIN 4109 EN 1111 EN 1717 ISO 3822

Scottish Water
Byelaws

UK Water Supply
Regulations

Ü-Zeichen



Shower thermostat for wall mounting - Brushed Durabross (23kt Gold)

SERIES SPECIFIC

34 442 979 Product version from 10/1/2023

Certificates and sustainability

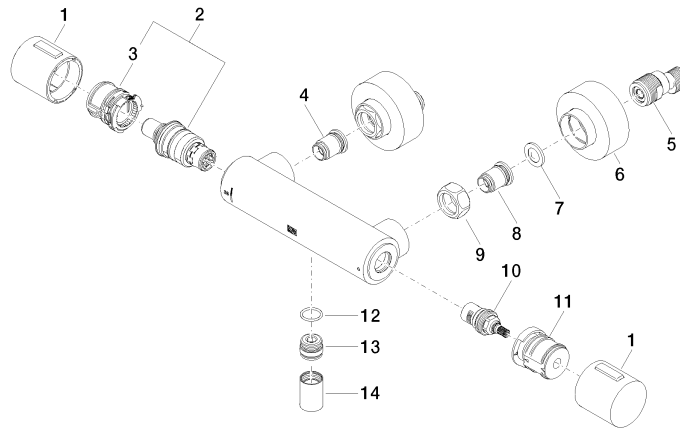
| | | | |
|-----------------|--------|-----------|-------------------|
| DVGW_DW-6509DN0 | LGA_29 | WRAS_2204 | Belgaqua_21-032-2 |
|-----------------|--------|-----------|-------------------|

Shower thermostat for wall mounting - Brushed Durabronz (23kt Gold)

SERIES SPECIFIC

34 442 979 Product version from 10/1/2023

Parts for other
finishes can be found
here: [Chrome](#)



Spare parts list

| No. | Item Number | Name | Quantity used | Delivery time |
|-----|-----------------------|------------|---------------|---------------|
| | 7 09 29 30 050 90 | sieve | 2.00 | 2 |
| | 9 09 24 77 008-00 | nut | 2.00 | 10 |
| | 3 90 30 40 010 00 90 | regulator | 1.00 | 2 |
| | 11 90 30 40 017 00 90 | base | 1.00 | 2 |
| | 6 90 31 20 512 00-28 | rosette | 2.00 | 20 |
| | 8 04 31 20 540 00 90 | insert | 1.00 | 2 |
| | 2 90 15 02 070 00 90 | cartridge | 1.00 | 2 |
| | 1 90 17 33 015 00-28 | handle | 2.00 | 20 |
| | 5 04 11 04 030 00 90 | connection | 2.00 | 2 |
| | 10 90 90 03 236 00 90 | top | 1.00 | 2 |
| | 13 09 31 20 511-28 | nipple | 1.00 | 60 |
| | 4 04 31 20 530 00 90 | insert | 1.00 | 2 |
| | 14 90 21 02 069 00-28 | cover | 1.00 | 20 |
| | 12 90 14 10 010 00 90 | seal | 1.00 | 2 |