

## Showerpipe with shower thermostat without hand shower FlowReduce 220 mm - Matte Black

TARA

34 459 892



Fits: TARA, VAIA, META

- shower with fixed riser projection 452mm
- overhead shower: rain flow
- rain shower Ø 220 mm
- rain shower with anti-scale system
- max. rainshower flow 7 l/min
- rotary diverter with volume control and shut-off function
- slide-on rosettes Ø 70 mm
- height of fittings up to rain shower (bottom edge) 963mm
- height of fittings up to top edge of elbow 1267mm
- gauge 150 mm - 13 mm
- metal shower hose 1750mm with integrated anti-twist protection
- 1/2" connection
- slide bar
- Pipe diameter 23.5 mm
- quick clearing
- This product can help a building meet the requirements of Green Building Rating Systems, e.g. LEED®, BREEAM®, DGNB
- WRAS 2204013

This article does not include a hand shower!

Intrinsic protection against back flow.


|  |                                |               |
|--|--------------------------------|---------------|
|    | Matte Black                    | 34 459 892-33 |
|    | Chrome                         | 34 459 892-00 |
|    | Brushed Platinum               | 34 459 892-06 |
|    | Platinum                       | 34 459 892-08 |
|    | Dark Chrome                    | 34 459 892-19 |
|    | Brushed Light Gold             | 34 459 892-27 |
|    | Brushed Durabronze (23kt Gold) | 34 459 892-28 |
|    | Brushed Bronze                 | 34 459 892-42 |
|    | Brushed Champagne (22kt Gold)  | 34 459 892-46 |
|    | Champagne (22kt Gold)          | 34 459 892-47 |
|   | Brushed Chrome                 | 34 459 892-93 |
|  | Brushed Dark Platinum          | 34 459 892-99 |

## Showerpipe with shower thermostat without hand shower FlowReduce 220 mm - Matte Black


TARA

34 459 892

### Required miscellaneous

|   |   |                       |
|---|---|-----------------------|
|  | <b>Hand shower FlowReduce - Matte Black</b> | 28 016 979-33<br>0010 |
|---|---|-----------------------|


### Required miscellaneous

|   |   |                       |
|---|---|-----------------------|
|  | <b>Hand shower FlowReduce - Matte Black</b> | 28 012 979-33<br>0010 |
|---|---|-----------------------|

### Required miscellaneous

|   |                                  |               |
|---|----------------------------------|---------------|
|  | <b>Hand shower - Matte Black</b> | 28 012 979-33 |
|---|----------------------------------|---------------|

### Required miscellaneous

|   |   |                       |
|---|---|-----------------------|
|  | <b>Hand shower FlowReduce - Matte Black</b> | 28 018 979-33<br>0010 |
|---|---|-----------------------|

### Required miscellaneous

|   |   |                       |
|---|---|-----------------------|
|  | <b>SERIES-VARIOUS Hand shower - Matte Black</b> | 28 029 979-33<br>0010 |
|---|---|-----------------------|

### Required miscellaneous

|   |   |                       |
|---|---|-----------------------|
|  | <b>SERIES-VARIOUS Hand shower - Matte Black</b> | 28 027 979-33<br>0010 |
|---|---|-----------------------|

### Required miscellaneous

|   |                                  |               |
|---|----------------------------------|---------------|
|  | <b>Hand shower - Matte Black</b> | 28 017 979-33 |
|---|----------------------------------|---------------|

### Required miscellaneous

|   |                                  |               |
|---|----------------------------------|---------------|
|  | <b>Hand shower - Matte Black</b> | 28 016 979-33 |
|---|----------------------------------|---------------|

### Required miscellaneous

|   |                                  |               |
|---|----------------------------------|---------------|
|  | <b>Hand shower - Matte Black</b> | 28 018 979-33 |
|---|----------------------------------|---------------|

### Required miscellaneous

|   |   |               |
|---|---|---------------|
|  | <b>SERIES-VARIOUS Hand shower - Matte Black</b> | 28 029 979-33 |
|---|---|---------------|

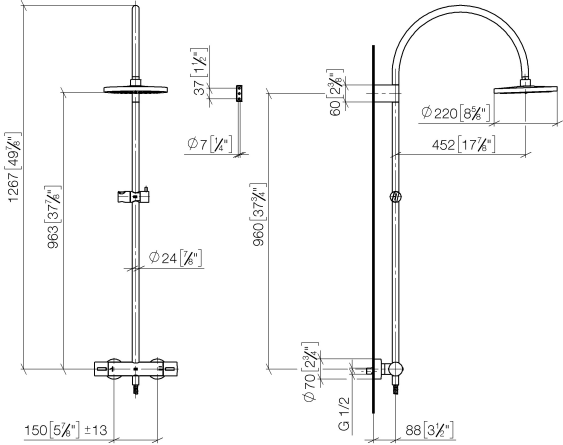
### Required miscellaneous

|   |   |                       |
|---|---|-----------------------|
|  | <b>SERIES-VARIOUS Hand shower - Matte Black</b> | 28 025 979-33<br>0010 |
|---|---|-----------------------|

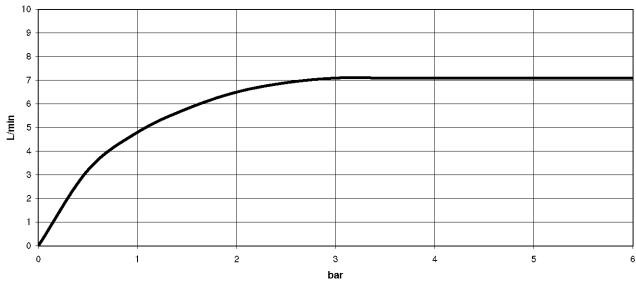
Showerpipe with shower thermostat without hand shower FlowReduce 220 mm  
 - Matte Black

TARA

34 459 892  
mm [inches]  
M 1:10



Flow rate chart



Codes & Standards

|                             |           |          |                        |
|-----------------------------|-----------|----------|------------------------|
| DIN 4109                    | EN 1717   | ISO 3822 | Scottish Water Byelaws |
| UK Water Supply Regulations | Ü-Zeichen |          |                        |



## Showerpipe with shower thermostat without hand shower FlowReduce 220 mm - Matte Black

---

TARA

34 459 892

Certificates

---

WRAS\_2204

Belgaqua\_21-032-2 LGA\_38

## Showerpipe with shower thermostat without hand shower FlowReduce 220 mm - Matte Black

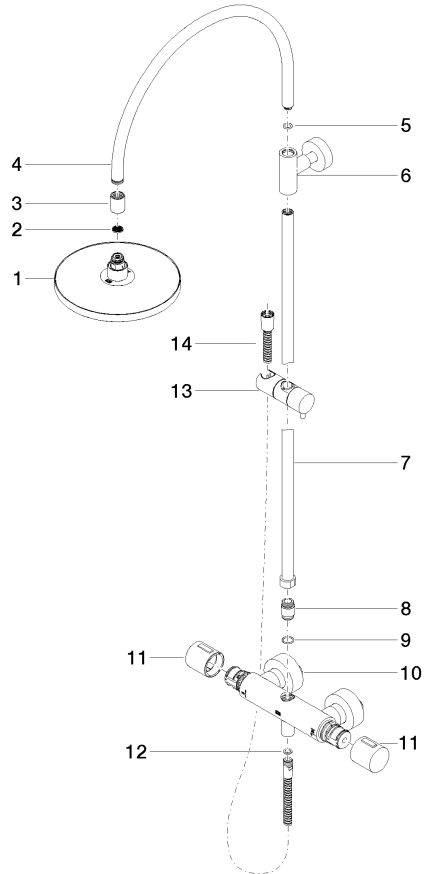
TARA

34 459 892

Product version up to 9/10/2020

**Product version from 9/10/2020**

Parts for other  
finishes can be found  
here: [Chrome](#)





Showerpipe with shower thermostat without hand shower FlowReduce 220 mm  
- Matte Black

TARA

34 459 892

Spare parts list

Product version up to 9/10/2020

**Product version from 9/10/2020**

| No. | Item Number        | Name   | Quantity used | Delivery time |
|-----|--------------------|--------|---------------|---------------|
|     | 04 12 05 092 00-33 | shower | 15            | 30            |