

## Showerpipe with shower thermostat without hand shower FlowReduce - Matte Black

IMO

34 459 979



Fits: IMO, LULU, TARA, LISSÉ, VAIA, META

- shower with fixed riser projection 453mm
- overhead shower: rain flow
- rain shower Ø 220 mm
- rain shower with anti-scale system
- max. rainshower flow 7 l/min
- rotary diverter with volume control and shut-off function
- slide-on rosettes Ø 70 mm
- height of fittings up to rain shower (bottom edge) 1009mm
- height of fittings up to top edge of elbow 1150mm
- gauge 150 mm - 13 mm
- metal shower hose 1750mm with integrated anti-twist protection
- 1/2" connection
- slide bar
- Pipe diameter 23.5 mm
- quick clearing
- This product can help a building meet the requirements of Green Building Rating Systems, e.g. LEED®, BREEAM®, DGNB
- WRAS 2204013

This article does not include a hand shower!

Intrinsic protection against back flow.


|  |                                |               |
|--|--------------------------------|---------------|
|    | Matte Black                    | 34 459 979-33 |
|    | Chrome                         | 34 459 979-00 |
|    | Brushed Platinum               | 34 459 979-06 |
|    | Platinum                       | 34 459 979-08 |
|    | Dark Chrome                    | 34 459 979-19 |
|    | Light Gold                     | 34 459 979-26 |
|    | Brushed Light Gold             | 34 459 979-27 |
|    | Brushed Durabronze (23kt Gold) | 34 459 979-28 |
|    | Brushed Bronze                 | 34 459 979-42 |
|    | Brushed Champagne (22kt Gold)  | 34 459 979-46 |
|   | Champagne (22kt Gold)          | 34 459 979-47 |
|  | Brushed Chrome                 | 34 459 979-93 |
|  | Brushed Dark Platinum          | 34 459 979-99 |

## Showerpipe with shower thermostat without hand shower FlowReduce - Matte Black


IMO

34 459 979

### Required miscellaneous

|   |   |                    |
|---|---|--------------------|
|  | <b>Hand shower FlowReduce - Matte Black</b> | 28 016 979-33 0010 |
|---|---|--------------------|


### Required miscellaneous

|   |   |                    |
|---|---|--------------------|
|  | <b>Hand shower FlowReduce - Matte Black</b> | 28 012 979-33 0010 |
|---|---|--------------------|

### Required miscellaneous

|   |                                  |               |
|---|----------------------------------|---------------|
|  | <b>Hand shower - Matte Black</b> | 28 012 979-33 |
|---|----------------------------------|---------------|

### Required miscellaneous

|   |   |                    |
|---|---|--------------------|
|  | <b>Hand shower FlowReduce - Matte Black</b> | 28 018 979-33 0010 |
|---|---|--------------------|

### Required miscellaneous

|   |   |                    |
|---|---|--------------------|
|  | <b>SERIES-VARIOUS Hand shower - Matte Black</b> | 28 029 979-33 0010 |
|---|---|--------------------|

### Required miscellaneous

|   |   |                    |
|---|---|--------------------|
|  | <b>SERIES-VARIOUS Hand shower - Matte Black</b> | 28 027 979-33 0010 |
|---|---|--------------------|

### Required miscellaneous

|   |                                  |               |
|---|----------------------------------|---------------|
|  | <b>Hand shower - Matte Black</b> | 28 017 979-33 |
|---|----------------------------------|---------------|

### Required miscellaneous

|   |                                  |               |
|---|----------------------------------|---------------|
|  | <b>Hand shower - Matte Black</b> | 28 016 979-33 |
|---|----------------------------------|---------------|

### Required miscellaneous

|   |                                  |               |
|---|----------------------------------|---------------|
|  | <b>Hand shower - Matte Black</b> | 28 018 979-33 |
|---|----------------------------------|---------------|

### Required miscellaneous

|   |   |               |
|---|---|---------------|
|  | <b>SERIES-VARIOUS Hand shower - Matte Black</b> | 28 029 979-33 |
|---|---|---------------|

### Required miscellaneous

|   |   |                    |
|---|---|--------------------|
|  | <b>SERIES-VARIOUS Hand shower - Matte Black</b> | 28 025 979-33 0010 |
|---|---|--------------------|

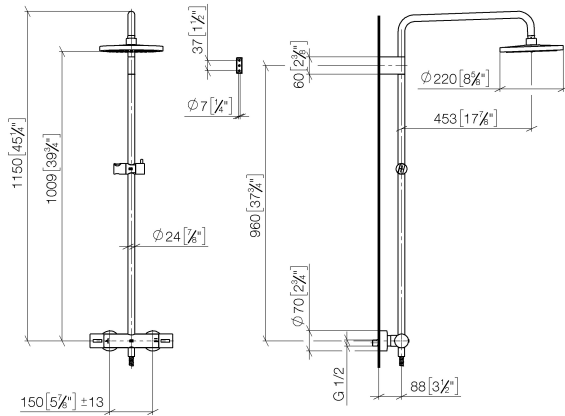
# Showerpipe with shower thermostat without hand shower FlowReduce - Matte Black

IMO

34 459 979

mm [inches]

1:10



## Flow rate chart



## Codes & Standards

DIN 4109

EN 1111

EN 1717

ISO 3822

Scottish Water  
Byelaws

UK Water Supply  
Regulations

Ü-Zeichen



## Showerpipe with shower thermostat without hand shower FlowReduce - Matte Black

IMO

---

34 459 979

Certificates

---

WRAS\_2204

DVGW\_DW-  
6509DN0

Belgaqua\_21-032-2 LGA\_38

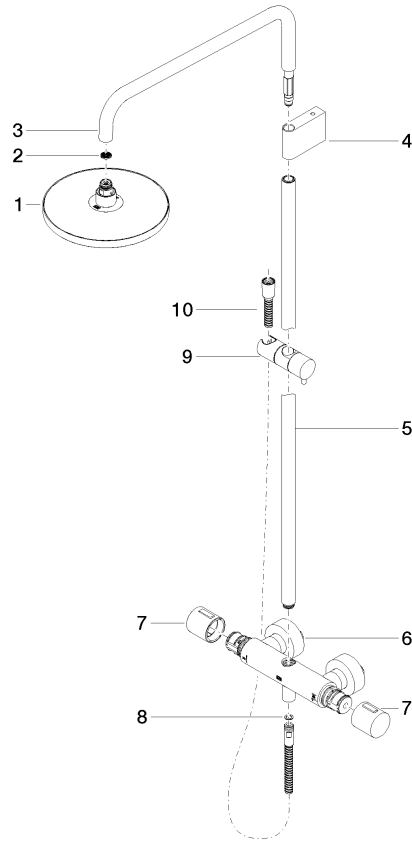
# Showerpipe with shower thermostat without hand shower FlowReduce - Matte Black

IMO

34 459 979

**Product version from 4/1/2024**

Parts for other  
finishes can be found  
here: [Chrome](#)





Showerpipe with shower thermostat without hand shower FlowReduce - Matte  
Black

IMO

34 459 979

**Spare parts list**

**Product version from 4/1/2024**

| No. | Item Number        | Name   | Quantity used | Delivery time |
|-----|--------------------|--------|---------------|---------------|
|     | 90 12 05 092 20-33 | shower | 11            | 30            |