

TARA Shower pipe with shower thermostat without hand shower 300 mm -

TARA

34 460 892

- shower with fixed riser projection 452mm
- overhead shower: rain flow
- rain shower Ø 300 mm
- rain shower with anti-scale system
- max. rainshower flow 14 l/min
- Function from: 10 l/min
- rotary diverter with volume control and shut-off function
- slide-on rosettes Ø 70 mm
- height of fittings up to rain shower (bottom edge) 964mm
- height of fittings up to top edge of elbow 1267mm
- gauge 150 mm - 13 mm
- metal shower hose 1750mm with integrated anti-twist protection
- 1/2" connection
- slide bar
- Pipe diameter 23.5 mm

This article does not include a hand shower!

Intrinsic protection against back flow.

34 460 892-39

	Chrome	34 460 892-00
--	--------	---------------

	Brushed Platinum	34 460 892-06
--	------------------	---------------

	Platinum	34 460 892-08
--	----------	---------------

	Dark Chrome	34 460 892-19
--	-------------	---------------

	Brushed Durabronze (23kt Gold)	34 460 892-28
--	--------------------------------	---------------

	Matte Black	34 460 892-33
--	-------------	---------------

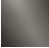
	Brushed Bronze	34 460 892-42
--	----------------	---------------

34 460 892-43

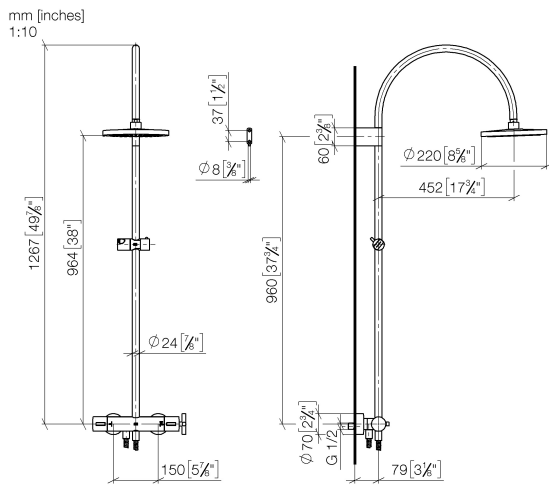
	Brushed Champagne (22kt Gold)	34 460 892-46
--	-------------------------------	---------------

	Champagne (22kt Gold)	34 460 892-47
--	-----------------------	---------------

	Brushed Chrome	34 460 892-93
--	----------------	---------------

	Brushed Dark Platinum	34 460 892-99
--	-----------------------	---------------

34 460 892



Flow rate chart



Codes & Standards

EN 1717



TARA Shower pipe with shower thermostat without hand shower 300 mm -

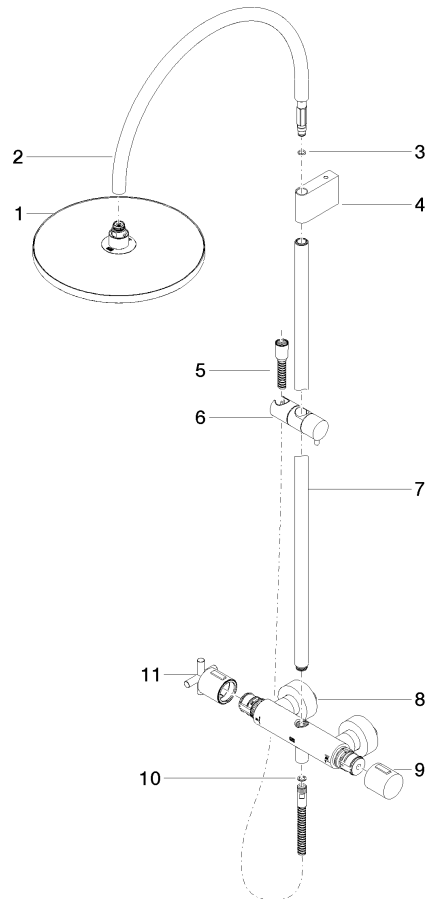
TARA

34 460 892

Certificates

Belgaqua_24-006-2

Parts for other
finishes can be found
here: [Chrome](#)





TARA Shower pipe with shower thermostat without hand shower 300 mm -

TARA

34 460 892

Spare parts list