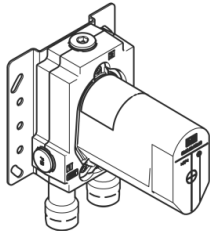


EDITION PRO Concealed single-lever mixer with backflow preventor -

35 071 970 90

• WRAS



Recommended miscellaneous

Extension 25 mm -

12 191 970 90



Recommended miscellaneous

Extension 25 mm -

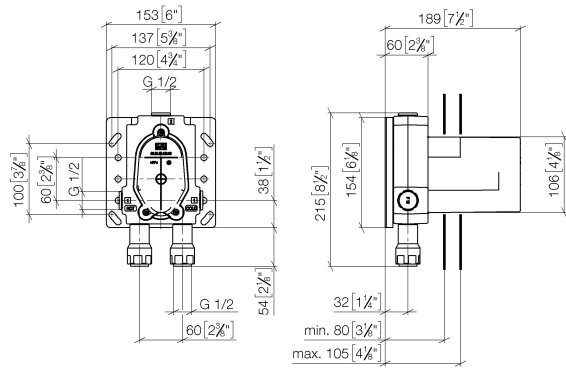
12 190 970 90



EDITION PRO Concealed single-lever mixer with backflow preventor -

35 071 970 90

mm [inches]



Codes & Standards

| | | | |
|----------|----------|---------------------------|--------------------------------|
| DIN 4109 | ISO 3822 | Scottish Water Byelaws | UK Water Supply Regulations |
|----------|----------|---------------------------|--------------------------------|

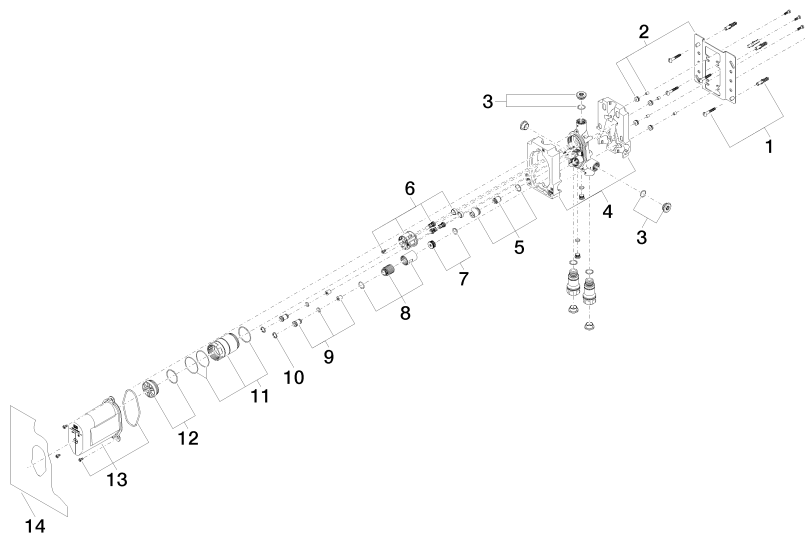
Ü-Zeichen

Certificates

| | | |
|--------|--------|-----------|
| LGA_19 | LGA_19 | WRAS_2207 |
|--------|--------|-----------|

EDITION PRO Concealed single-lever mixer with backflow preventor -

35 071 970 90



Spare parts list

| No. | Item Number | Name | Quantity used | Delivery time |
|-----|--------------------|-------------|---------------|---------------|
| 1 | 04 30 31 024 01 90 | fixing set | 2 | 2 |
| 2 | 04 17 20 128 00 90 | holder | 1 | 2 |
| 3 | 04 31 20 006 00 90 | plug | 2 | 2 |
| 4 | 09 11 11 058 90 | accessories | 1 | 2 |
| 5 | 90 17 01 188 00 90 | insert | 1 | 2 |
| 6 | 90 18 40 151 00 90 | insert | 1 | 2 |
| 7 | 90 31 20 098 00 90 | plug | 1 | 2 |
| 8 | 90 17 01 189 00 90 | sleeve | 1 | 2 |
| 9 | 04 24 03 223 00 90 | insert | 2 | 2 |
| 10 | 09 16 01 014 90 | ring | 2 | 2 |
| 11 | 90 17 01 187 00 90 | sleeve | 1 | 2 |
| 12 | 04 31 20 100 00 90 | plug | 1 | 2 |
| 13 | 90 21 02 148 00 90 | cap | 1 | 2 |
| 14 | 04 14 03 155 00 90 | gasket kit | 1 | 2 |