

Concealed wall installation box -

35 205 970 90

- female thread 1/2" connection
- dust cover
- anti-water packing



Required miscellaneous



WATER POINTS Adapter plate - 12 305 970 90
•adapter plate for mounting
concealed rough parts 35 205 970
90 on the xGRID installation track.

Recommended miscellaneous



**xGRID Attachment set for
integrating in the dry wall
construction -** 12 340 970 90

Required miscellaneous

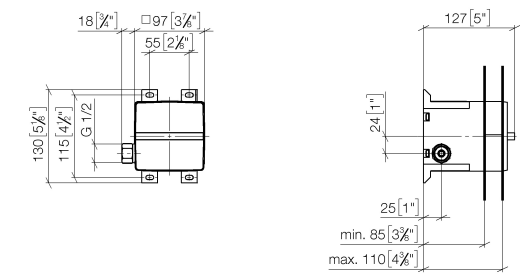


xGRID Installation track 555 mm - 12 360 970 90

Concealed wall installation box -

35 205 970 90

mm [inches]



Codes & Standards

DIN 4109

ISO 3822

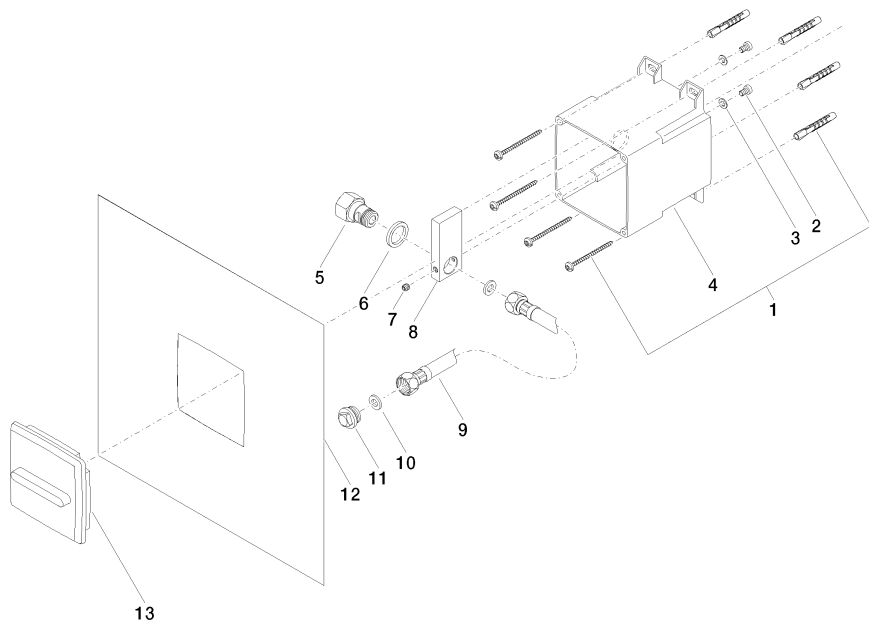
Ü-Zeichen

Certificates

LGA_18

Concealed wall installation box -

35 205 970 90



Spare parts list

No.	Item Number	Name	Quantity used	Delivery time
	1 05 30 31 025 00 90	fixing set	2	2
	2 09 30 30 112 90	screw	2	2
	3 09 30 11 048 90	disc	2	2
	4 09 11 11 032 90	accessories	1	60
	5 09 24 03 200 20 90	nipple	1	2
	6 09 14 05 001 90	seal	1	2
	7 09 31 11 049 90	pin	1	2
	8 09 17 20 096 90	holder	1	2
	9 09 30 03 002 90	hose	1	2
	10 09 14 20 007 90	seal	2	2
	11 09 31 20 042 90	plug	1	2
	12 04 14 03 118 00 90	gasket kit	1	2
	13 09 11 01 096 90	cover	1	2