

Concealed wall installation box -

SERIES-VARIOUS

35 206 970 90



- female thread 1/2" connection
- dust cover
- anti-water packing
- WRAS

Recommended miscellaneous



**xGRID Attachment set for
integrating in the dry wall
construction -**

12 340 970 90

Required miscellaneous



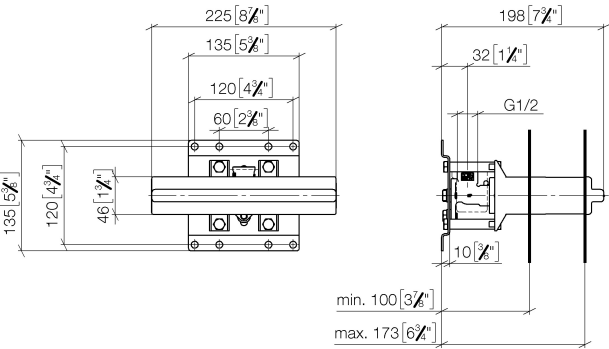
xGRID Installation track 555 mm - 12 360 970 90

Concealed wall installation box -

SERIES-VARIOUS

35 206 970 90

mm [inches]



Codes & Standards

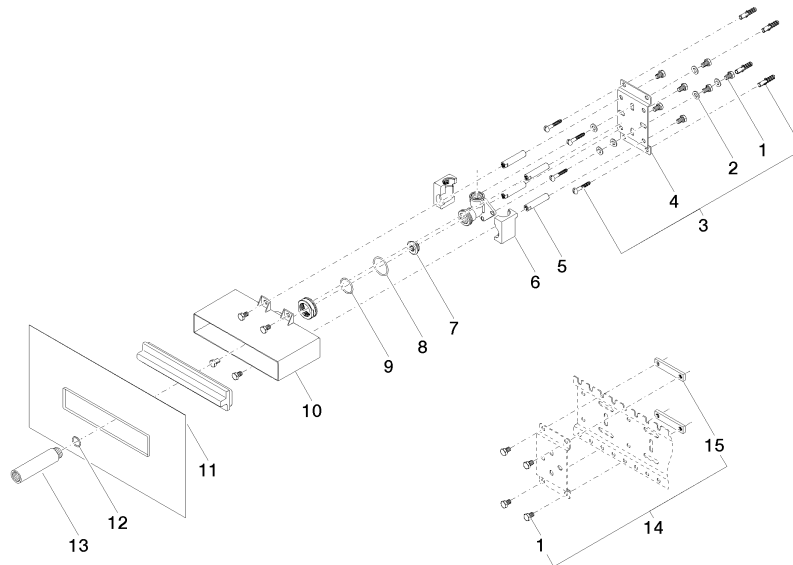
DIN 4109	ISO 3822	Scottish Water Byelaws	UK Water Supply Regulations
----------	----------	---------------------------	--------------------------------

Ü-Zeichen

Certificates and sustainability

WRAS_2106	LGA_19
-----------	--------

35 206 970 90



Spare parts list

No.	Item Number	Name	Quantity used	Delivery time
	9 09 14 10 118 90	seal	1.00	2
	7 04 31 20 006 00 90	plug	1.00	2
	14 04 17 20 100 00 90	fixing set	1.00	2
	10 09 11 11 053 90	accessories	1.00	60
	13 09 24 03 169 10 90	adaptor	1.00	2
	11 04 14 03 126 00 90	gasket kit	1.00	2
	15 09 17 20 100 90	holder	2.00	60
	2 09 30 11 139 90	disc	6.00	2
	8 09 14 10 149 90	seal	1.00	2
	5 09 18 40 138 90	sleeve	1.00	60
	6 09 11 11 036 90	accessories	1.00	2
	4 09 17 20 094 90	holder	1.00	2
	3 04 30 31 024 01 90	fixing set	2.00	2
	1 09 30 30 152 90	screw	15.00	2
	12 90 14 10 010 00 90	seal	1.00	2