

SERENITY SKY+ Concealed ceiling installation box -

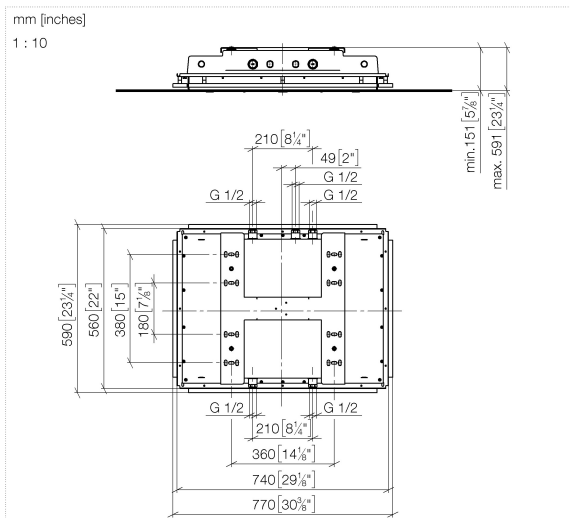
SERIES-VARIOUS

35 780 970 90 Product version from 9/1/2024



- concealed rough parts
- flush-mounted reflection box, 662 x 482 mm, RAL 9003, Signal White
- max. recess depth 590 mm
- min. recess depth 150 mm
- 5x 1/2" female connector
- weight 15kg
- Recommended control element: xTool
- Not suitable for use in a steam room.

35 780 970 90 Product version from 9/1/2024



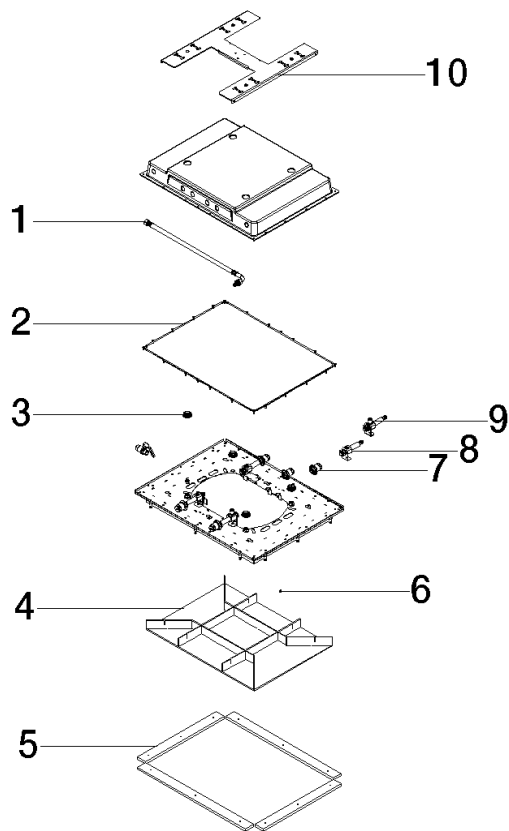
Codes & Standards

Scottish Water Byelaws

UK Water Supply Regulations

Certificates and sustainability

WRAS_250102



Spare parts list

| No. | Item Number | Name | Quantity used | Delivery time |
|-----|--------------------|------------|---------------|---------------|
| 6 | 91 30 30 194 00 90 | screw | 1.00 | 2 |
| 4 | 90 91 42 195 01 90 | lid | 1.00 | 2 |
| 2 | 90 14 03 194 00 90 | seal | 1.00 | 2 |
| 1 | 90 30 04 099 00 90 | hose | 1.00 | 2 |
| 8 | 90 17 20 308 01 90 | connection | 1.00 | 2 |
| 10 | 90 17 20 304 00 90 | holder | 1.00 | 2 |
| 7 | 90 24 03 305 00 90 | fixing set | 1.00 | 2 |
| 3 | 91 31 20 530 00 90 | nipple set | 1.00 | 2 |
| 9 | 90 17 20 308 00 90 | connection | 1.00 | 2 |
| 5 | 90 18 30 020 00 90 | sleeve | 1.00 | 2 |