

Concealed single-lever mixer with cover plate - Brushed Chrome

SERIES SPECIFIC

36 060 670    Product version from 6/1/2024



- cover plate 80 x 80 mm
- WRAS

|   |                                  |               |
|---|----------------------------------|---------------|
|    | Brushed Chrome                   | 36 060 670-93 |
|    | Chrome                           | 36 060 670-00 |
|    | Brushed Platinum                 | 36 060 670-06 |
|    | Platinum                         | 36 060 670-08 |
|    | Dark Chrome                      | 36 060 670-19 |
|    | Brushed Light Gold               | 36 060 670-27 |
|    | Brushed Durabrass<br>(23kt Gold) | 36 060 670-28 |
|    | Matte Black                      | 36 060 670-33 |
|    | Brushed Dark Brass               | 36 060 670-39 |
|   | Brushed Champagne (22kt Gold)    | 36 060 670-46 |
|  | Champagne (22kt Gold)            | 36 060 670-47 |
|  | Brushed Dark Platinum            | 36 060 670-99 |

Required miscellaneous

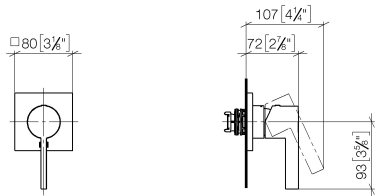


- Concealed wall-mounted single-lever mixer -

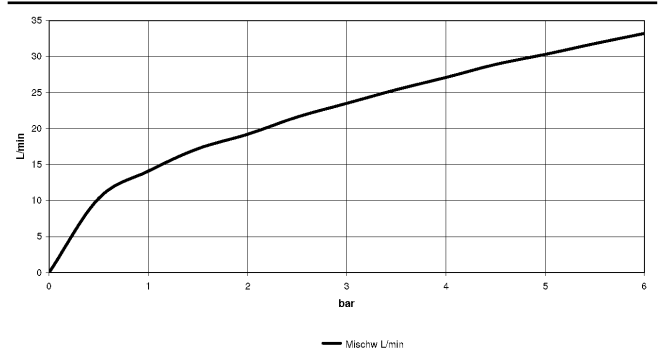
35 860 970 90

  - max. recess depth 95 mm
  - min. recess depth 80 mm

mm [inches]



Flow rate chart



Codes & Standards

|          |          |                        |                             |
|----------|----------|------------------------|-----------------------------|
| DIN 4109 | ISO 3822 | Scottish Water Byelaws | UK Water Supply Regulations |
|----------|----------|------------------------|-----------------------------|

Ü-Zeichen



## Concealed single-lever mixer with cover plate - Brushed Chrome

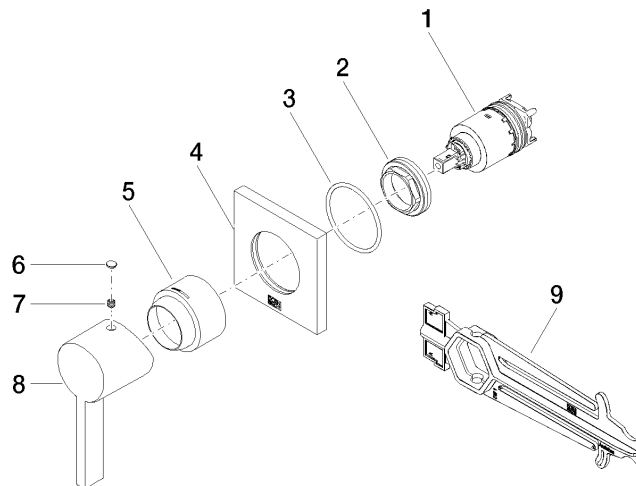
SERIES SPECIFIC

36 060 670 Product version from 6/1/2024

### Certificates and sustainability

WRAS\_2107

LGA\_29



## Spare parts list

| No. | Item Number        | Name      | Quantity used | Delivery time |
|-----|--------------------|-----------|---------------|---------------|
| 1   | 90 15 05 064 01 90 | cartridge | 1.00          | 2             |
| 8   | 09 20 67 004-93    | handle    | 1.00          | 20            |
| 6   | 90 31 20 087 00-93 | plug      | 1.00          | 20            |
| 5   | 09 11 02 530-93    | cover     | 1.00          | 20            |
| 2   | 09 24 04 105 90    | nut       | 1.00          | 2             |
| 4   | 09 27 78 048-93    | rosette   | 1.00          | 20            |
| 9   | 90 30 09 064 00 90 | key       | 1.00          | 2             |
| 3   | 90 14 10 049 00 90 | seal      | 1.00          | 2             |
| 7   | 90 31 11 112 00 90 | pin       | 1.00          | 2             |