




36 120 626



- automatic diverter
- cover plate Ø 150 mm
- WRAS

	Brushed Chrome	36 120 626-93
	Chrome	36 120 626-00
	Matte Black	36 120 626-33

Required miscellaneous

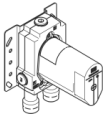


**SERIES SPECIFIC Concealed single-lever mixer -**

35 070 970 90

- max. recess depth 105 mm
- min. recess depth 80 mm

Required miscellaneous



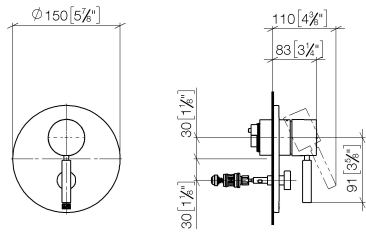
**SERIES SPECIFIC Concealed single-lever mixer with backflow preventor -**

35 071 970 90

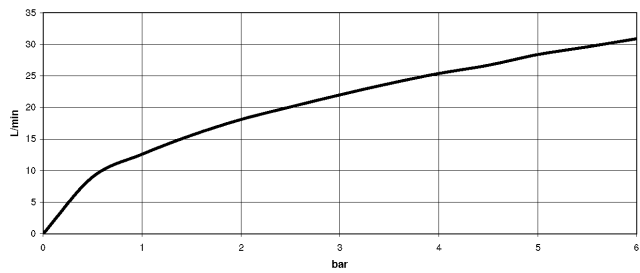
- max. recess depth 105 mm
- min. recess depth 80 mm

36 120 626

mm [inches]



### Flow rate chart



### Codes & Standards

DIN 4109

ISO 3822

Scottish Water  
Byelaws

UK Water Supply  
Regulations

Ü-Zeichen



## EDITION PRO Concealed single-lever mixer with diverter - Brushed Chrome

---

EDITION PRO

36 120 626

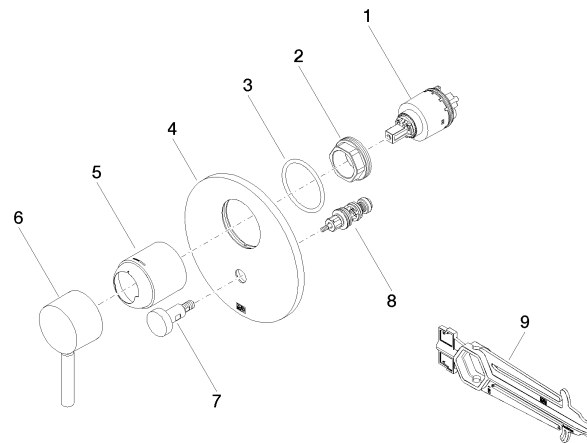
Certificates and sustainability

---

LGA\_19

WRAS\_2207

36 120 626



## Spare parts list

No.	Item Number	Name	Quantity used	Delivery time
2	09 24 04 448 90	nut	1.00	2
6	90 20 66 004 00-93	handle	1.00	20
4	09 11 02 261-93	plate	1.00	20
3	09 14 10 084 90	seal	1.00	2
8	90 21 34 081 00 90	diverter	1.00	2
5	09 11 02 360-93	cover	1.00	20
7	90 31 09 139 00-93	pull-rod	1.00	20
1	90 15 05 039 00 90	cartridge	1.00	2
9	90 30 09 064 00 90	key	1.00	2