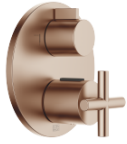


## TARA Concealed thermostat with two function volume control - Brushed Bronze

TARA

36 426 892

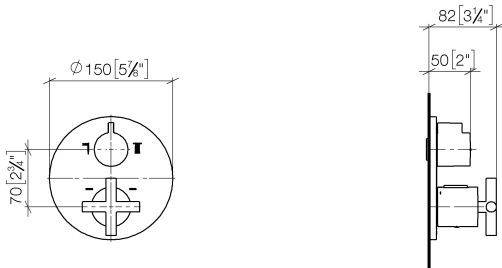


- rotary diverter with volume control and shut-off function
- cover plate Ø 150 mm
- temperature control handle with safety limit stop at 38°C
- hot water temperature limiter, can be preset
- WRAS 1906098

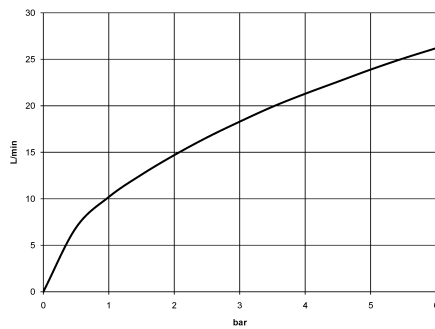
	Brushed Bronze	36 426 892-42
	Chrome	36 426 892-00
	Brushed Platinum	36 426 892-06
	Platinum	36 426 892-08
	Dark Chrome	36 426 892-19
	Brushed Durabronze (23kt Gold)	36 426 892-28
	Matte Black	36 426 892-33
	Brushed Champagne (22kt Gold)	36 426 892-46
	Champagne (22kt Gold)	36 426 892-47
	Brushed Chrome	36 426 892-93
	Brushed Dark Platinum	36 426 892-99

36 426 892

mm [inches]



### Flow rate chart



### Codes & Standards

DIN 4109

ISO 3822

Scottish Water  
Byelaws

UK Water Supply  
Regulations

### Ü-Zeichen



## TARA Concealed thermostat with two function volume control - Brushed Bronze

---

TARA

36 426 892

### Certificates

---

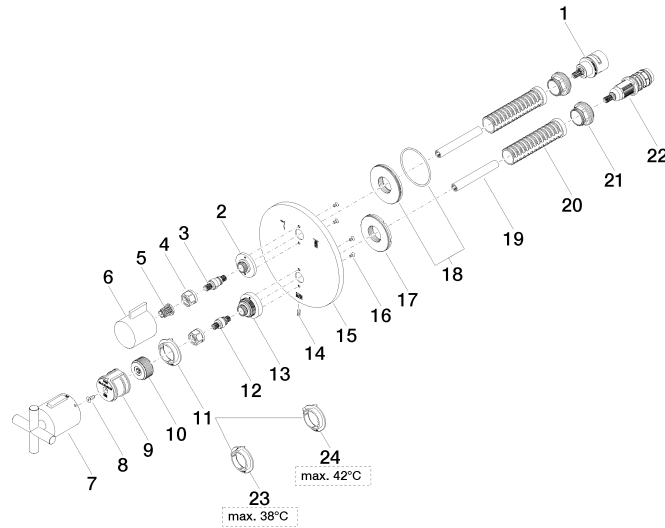
WRAS\_1906

LGA\_19

LGA\_19

**Product version from 5/1/2022**

Parts for other  
finishes can be found  
here: [Chrome](#)





## TARA Concealed thermostat with two function volume control - Brushed Bronze

TARA

36 426 892

### Spare parts list

#### Product version from 5/1/2022

No.	Item Number	Name	Quantity used	Delivery time
	90 90 03 163 00 90	diverter	31	2